

# HC-HS06-I-UT-M 7-12 - Contact insert



1406534

<https://www.phoenixcontact.com/no/products/1406534>

Please be informed that the data shown in this PDF document is generated from our online catalog. Please find the complete data in the user documentation. Our general terms of use for downloads are valid.



Contact insert, number of positions: 6+PE, size: B16, Pin, Screw connection, 400 V/690 V, 41 A, 0.5 mm<sup>2</sup> ... 6 mm<sup>2</sup>, application: Power

## Your advantages

- For fast coding with plastic profile<br/>

## Commercial data

Item number	1406534
Packing unit	1 pc
Minimum order quantity	1 pc
Sales key	31BBF
Product key	BF7ABI
Catalog page	Page 563 (C-2-2019)
GTIN	4046356926287
Weight per piece (including packing)	90.4 g
Weight per piece (excluding packing)	91.62 g
Customs tariff number	85366990
Country of origin	CN

# HC-HS06-I-UT-M 7-12 - Contact insert



1406534

<https://www.phoenixcontact.com/no/products/1406534>

## Technical data

### Notes

General	For HEAVYCON housing B16 and B32
General	Connectors may be operated only when there is no load/voltage.

### Mounting

Assembly instructions	To ensure correct use, installation in housing with IP54 protection or better is required
-----------------------	---

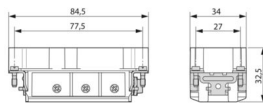
### Product properties

Type	B16 B32
Product type	Contact insert with a fixed no. of positions
Number of positions	6
Connection profile	6+PE
Contact numbering	7 - 12
Application	Power
Contact material type	turned
Series	HC-HS

### Insulation characteristics

Overvoltage category	III
Degree of pollution	3

### Dimensions

Dimensional drawing	
Width	34 mm
Height	34 mm
Length	84.5 mm
Drill hole distance, horizontal	77.5 mm
Drill hole distance, vertical	27 mm

### Mechanical characteristics

Contact diameter	3.5 mm
------------------	--------

### Connection data

#### Connection technology

Connection technology	Screw connection
Connection in acc. with standard	IEC / EN

#### Conductor connection

# HC-HS06-I-UT-M 7-12 - Contact insert



1406534

<https://www.phoenixcontact.com/no/products/1406534>

Conductor cross section	0.5 mm <sup>2</sup> ... 6 mm <sup>2</sup> (power contacts)
Connection cross section AWG	20 ... 10
Tightening torque	0.8 Nm ... 1.2 Nm (PE connection)
	0.5 Nm ... 0.8 Nm (Mounting screws for mounting in the HEAVYCON housing)
	1.2 Nm
Stripping length of the individual wire	10 mm

## Electrical properties

Rated voltage (III/3)	400 V (Conductor-PE)
	690 V (Conductor-Conductor)
Rated voltage for power contacts	400/690 V
Rated surge voltage	6 kV (power contacts)
Rated current	41 A (power contacts)
SCCR	5 kA (UL 2237)

## Mechanical properties

### Mechanical data

Insertion/withdrawal cycles	≥ 500
-----------------------------	-------

## Material specifications

Flammability rating according to UL 94	V0
Contact material	Copper alloy
Contact surface material	Ag
Contact carrier material	PC
Standards/regulations	PC: Fire protection in rail vehicles - requirement sets R22, R23, and R24 acc. to DIN EN 45545-2 (Risk level HL1 - HL3)

## Environmental and real-life conditions

### Ambient conditions

Ambient temperature (operation)	-40 °C ... 125 °C (including heating up of contacts)
---------------------------------	--

## Standards and regulations

### Testing

Standards/regulations	PC: Fire protection in rail vehicles - requirement sets R22, R23, and R24 acc. to DIN EN 45545-2 (Risk level HL1 - HL3)
-----------------------	---

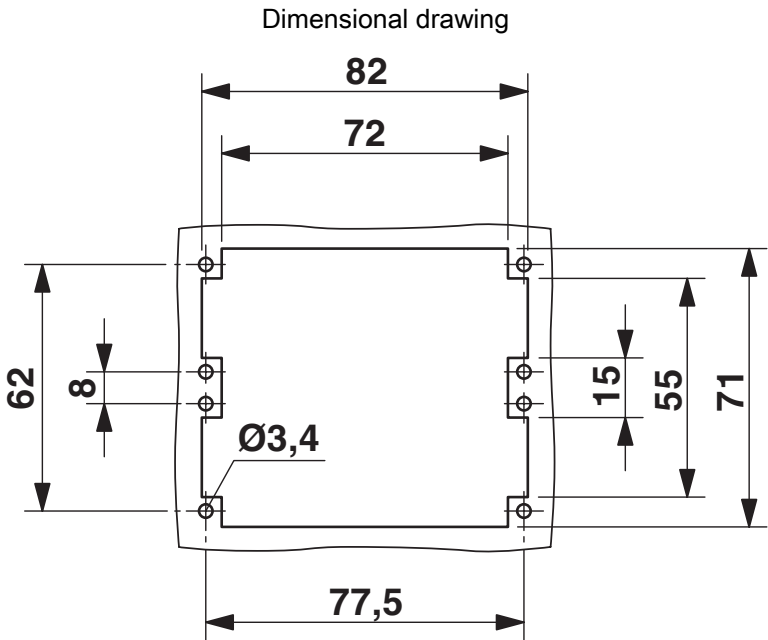
HC-HS06-I-UT-M 7-12 - Contact insert



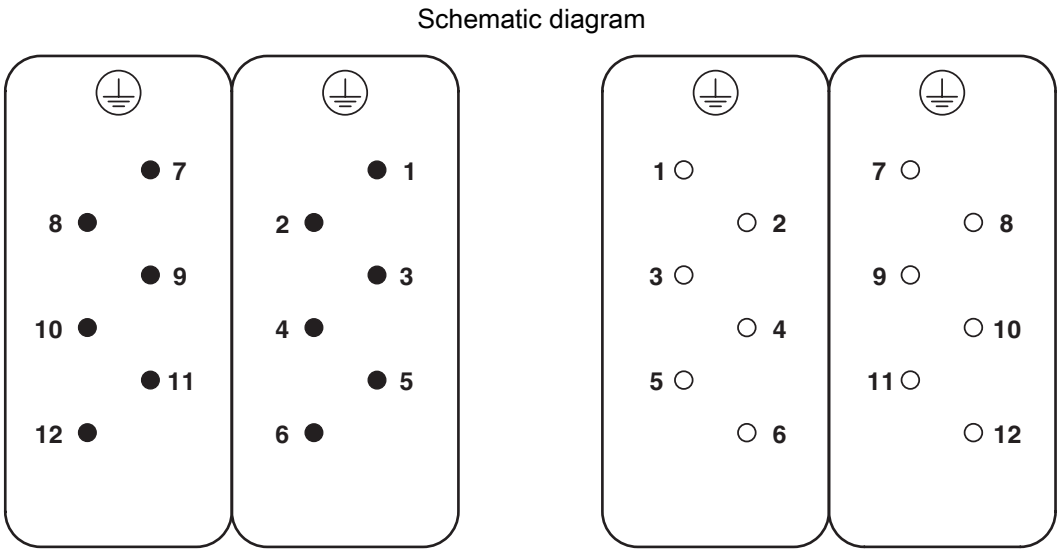
1406534

<https://www.phoenixcontact.com/no/products/1406534>

Drawings



Mounting cutout when used without housing



Connector pin assignment, connection side

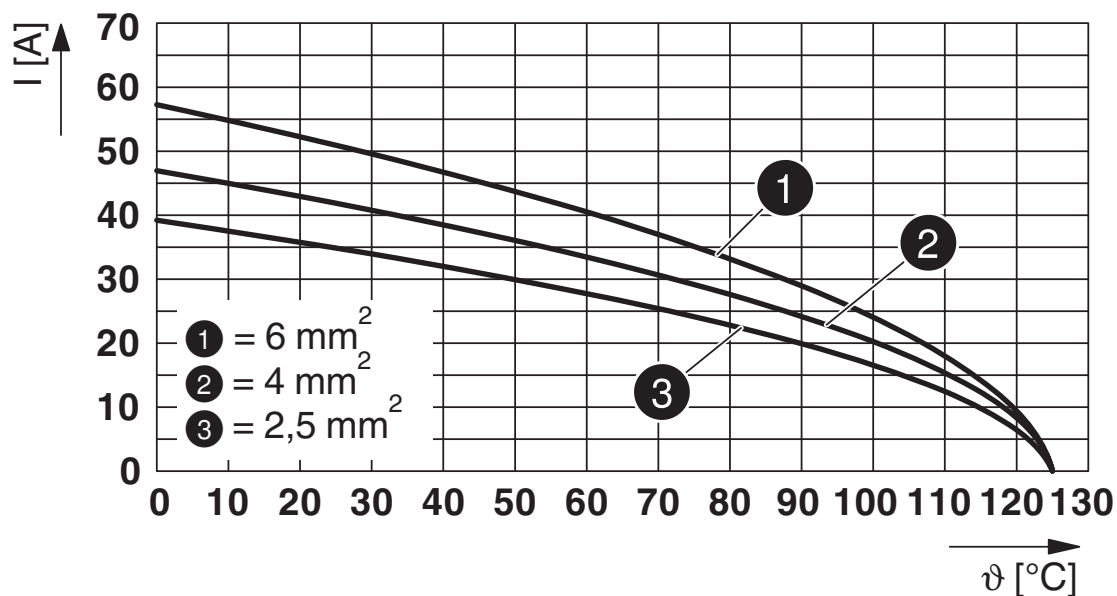
# HC-HS06-I-UT-M 7-12 - Contact insert

1406534

<https://www.phoenixcontact.com/no/products/1406534>

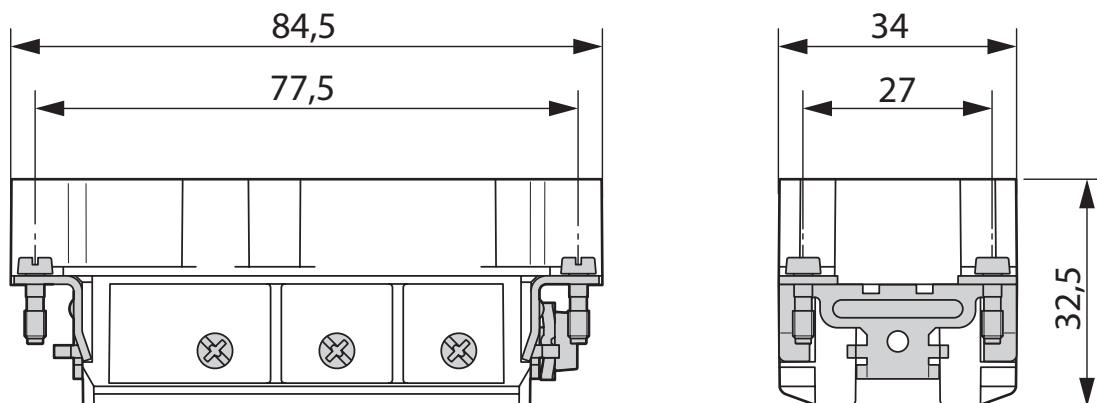


Diagram



Derating diagram

Dimensional drawing



Male insert

# HC-HS06-I-UT-M 7-12 - Contact insert



1406534

<https://www.phoenixcontact.com/no/products/1406534>

## Approvals

To download certificates, visit the product detail page: <https://www.phoenixcontact.com/no/products/1406534>

### DNV

Approval ID: TAE000037S



### CSA

Approval ID: 013631\_0\_000

	Nominal voltage $U_N$	Nominal current $I_N$	Cross section AWG	Cross section $\text{mm}^2$
	600 V	32 A	- 10	-



### UL Recognized

Approval ID: FILE E 118976

	Nominal voltage $U_N$	Nominal current $I_N$	Cross section AWG	Cross section $\text{mm}^2$
	600 V	35 A	-	-



### EAC

Approval ID: RU C-DE.BL08.B.00511



### UL Recognized

Approval ID: E468743

	Nominal voltage $U_N$	Nominal current $I_N$	Cross section AWG	Cross section $\text{mm}^2$
	600 V	35 A	-	-

# HC-HS06-I-UT-M 7-12 - Contact insert



1406534

<https://www.phoenixcontact.com/no/products/1406534>

## Classifications

### ECLASS

ECLASS-11.0	27440205
ECLASS-12.0	27440205
ECLASS-13.0	27440205

### ETIM

ETIM 9.0	EC000438
----------	----------

### UNSPSC

UNSPSC 21.0	39121500
-------------	----------

# HC-HS06-I-UT-M 7-12 - Contact insert



1406534

<https://www.phoenixcontact.com/no/products/1406534>

## Environmental product compliance

China RoHS	Environmentally Friendly Use Period = 50 years
	For information on hazardous substances, refer to the manufacturer's declaration available under "Downloads"

Phoenix Contact 2024 © - all rights reserved  
<https://www.phoenixcontact.com>

PHOENIX CONTACT AS  
Strømsveien 344  
N-1081 Oslo  
+47 22 07 68 00  
[norge@phoenixcontact.com](mailto:norge@phoenixcontact.com)