

HC-EVO-B24-SHWS-2SSM40-PLRBK - Housing



1407663

<https://www.phoenixcontact.com/sg/products/1407663>

Please be informed that the data shown in this PDF document is generated from our online catalog. Please find the complete data in the user documentation. Our general terms of use for downloads are valid.



Box mounting bases B24, with single locking latch, material: PA, cable outlets: 2, lateral, 2x M40, height: 84 mm, cable gland: none, Standard

Product description

One screw connection opening is closed, however can be opened using a screwdriver

Your advantages

- Lower costs than metal version
- Low weight
- Lower risk of condensation

Commercial data

Item number	1407663
Packing unit	1 pc
Minimum order quantity	1 pc
Sales key	*****
Product key	BF7APL
Catalog page	Page 632 (C-2-2019)
GTIN	4046356777261
Weight per piece (including packing)	217.9 g
Weight per piece (excluding packing)	215.4 g
Customs tariff number	85389099
Country of origin	PL

HC-EVO-B24-SHWS-2SSM40-PLRBK - Housing



1407663

<https://www.phoenixcontact.com/sg/products/1407663>

Technical data

Notes

General	For contact inserts HC-B24, BB46, D64, DD108, M, K, HV10-I-PT, HV 10-E...C
---------	--

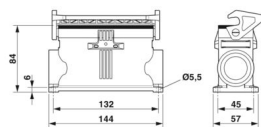
Product properties

Product type	Housing with locking latch
Housing type	Box mounting bases
Product family	HC-EVO-B
Application	Standard
Type	B24
No. of cable outlets	2
Type of the screw connection	2x M40
Type	Tall design
Cable outlet	lateral
Pg screw connection	none

Data management status

Article revision	03
------------------	----

Dimensions

Dimensional drawing	
Width	57 mm
Height	84 mm
Length	144 mm
Hole diameter	5.5 mm

Material specifications

Flammability rating according to UL 94	V0 (Housing) V0 (Interlock)
Seal material	NBR
Housing material	PA
Locking latch material	PA

Mechanical properties

Mechanical data

Type of the screw connection	2x M40
Locking type	Latch

HC-EVO-B24-SHWS-2SSM40-PLRBK - Housing



1407663

<https://www.phoenixcontact.com/sg/products/1407663>

Connection data

Tightening torque	2 Nm ... 3 Nm (for M5 mounting screws on the surface-mount housing)
-------------------	---

Mounting

Assembly note	One of the two openings for the screw connections is sealed but can be broken open using a screwdriver.
---------------	---

Environmental and real-life conditions

Ambient conditions	
Degree of protection	IP66
Enclosure rating (NEMA)	12 (UL 50e)
Impact strength	IK08
Ambient temperature (operation)	-40 °C ... 125 °C

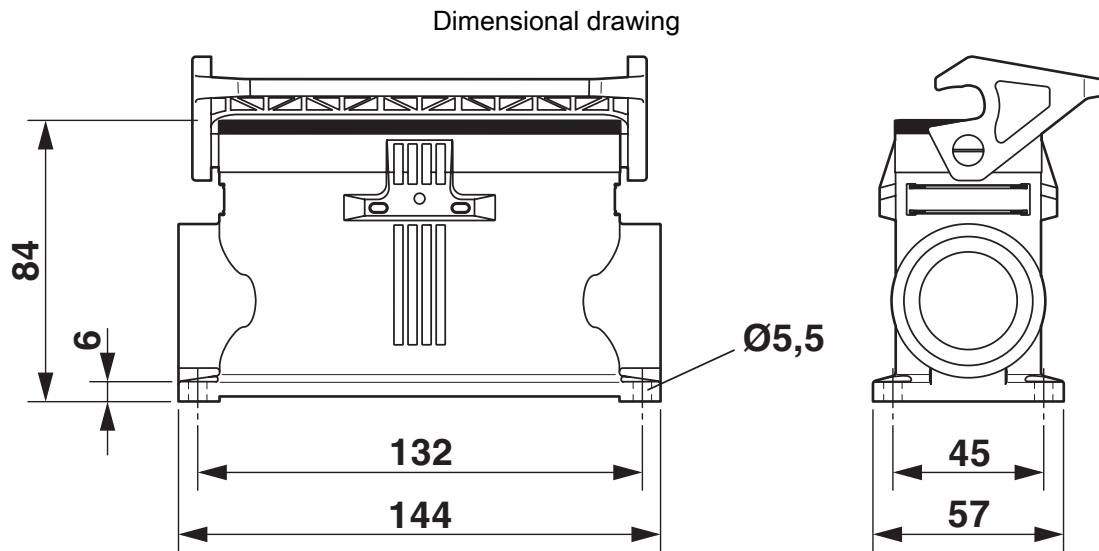
HC-EVO-B24-SHWS-2SSM40-PLRBK - Housing

1407663

<https://www.phoenixcontact.com/sg/products/1407663>



Drawings



Dimensional drawing

HC-EVO-B24-SHWS-2SSM40-PLRBK - Housing



1407663

<https://www.phoenixcontact.com/sg/products/1407663>

Approvals

To download certificates, visit the product detail page: <https://www.phoenixcontact.com/sg/products/1407663>

DNV

Approval ID: TAE000037S



cUL Recognized

Approval ID: E255026



UL Recognized

Approval ID: E255026



EAC

Approval ID: RU C-DE.AI30.B.01102



EAC

Approval ID: RU C-DE.BL08.B.00511

cULus Recognized

HC-EVO-B24-SHWS-2SSM40-PLRBK - Housing



1407663

<https://www.phoenixcontact.com/sg/products/1407663>

Classifications

ECLASS

ECLASS-11.0	27440202
ECLASS-12.0	27440202
ECLASS-13.0	27440202

ETIM

ETIM 9.0	EC000437
----------	----------

UNSPSC

UNSPSC 21.0	31261500
-------------	----------

Environmental product compliance

EU RoHS	
Fulfills EU RoHS substance requirements	Yes, No exemptions
China RoHS	
Environment friendly use period (EFUP)	EFUP-E
	No hazardous substances above the limits
EU REACH SVHC	
REACH candidate substance (CAS No.)	No substance above 0.1 wt%

Phoenix Contact 2024 © - all rights reserved
<https://www.phoenixcontact.com>

PHOENIX CONTACT SEA Pte. Ltd.
105 Eunos Avenue 3, #04-00
Singapore 409836
+65 6228 4900
marketing@phoenixcontact.com.sg