

HC-EVO-B24-SHWSC-2SSM40-PLRBK - Housing



1407664

<https://www.phoenixcontact.com/us/products/1407664>

Please be informed that the data shown in this PDF document is generated from our online catalog. Please find the complete data in the user documentation. Our general terms of use for downloads are valid.



Box mounting bases B24, with single locking latch, material: PA, protective cover material: PC, cable outlets: 2, lateral, 2x M40, height: 84 mm, cable gland: none, protective cover: yes, Standard

Product description

One screw connection opening is closed, however can be opened using a screwdriver

Your advantages

- Lower costs than metal version
- Low weight
- Lower risk of condensation

Commercial data

Item number	1407664
Packing unit	1 pc
Minimum order quantity	1 pc
Sales key	BF57
Product key	BF7APL
Catalog page	Page 632 (C-2-2019)
GTIN	4046356777278
Weight per piece (including packing)	263.3 g
Weight per piece (excluding packing)	255.5 g
Customs tariff number	85389099
Country of origin	PL

Technical data

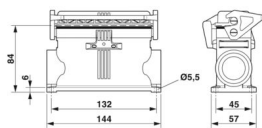
Notes

General	For contact inserts HC-B24, BB46, D64, DD108, M, K, HV10-I-PT, HV 10-E...C
---------	--

Product properties

Product type	Housing with locking latch
Housing type	Box mounting bases
Product family	HC-EVO-B
Application	Standard
Type	B24
No. of cable outlets	2
Type of the screw connection	2x M40
Type	Tall design
Protective cover	yes
Cable outlet	lateral
Pg screw connection	none

Dimensions

Dimensional drawing	
Width	57 mm
Height	84 mm
Length	144 mm
Hole diameter	5.5 mm

Material specifications

Flammability rating according to UL 94	V0 (Housing)
	V0 (Interlock)
	V0 (Protective cover)
Seal material	NBR
Housing material	PA
Material, protective cover	PC
Locking latch material	PA

Mechanical properties

Mechanical data

Type of the screw connection	2x M40
Locking type	Latch

Connection data

Tightening torque	2 Nm ... 3 Nm (for M5 mounting screws on the surface-mount housing)
-------------------	---

Mounting

Assembly note	One of the two openings for the screw connections is sealed but can be broken open using a screwdriver.
---------------	---

Environmental and real-life conditions

Ambient conditions	
Degree of protection	IP66 (when plugged in or with locked protective cover)
Enclosure rating (NEMA)	12 (UL 50e)
Impact strength	IK08
Ambient temperature (operation)	-40 °C ... 125 °C

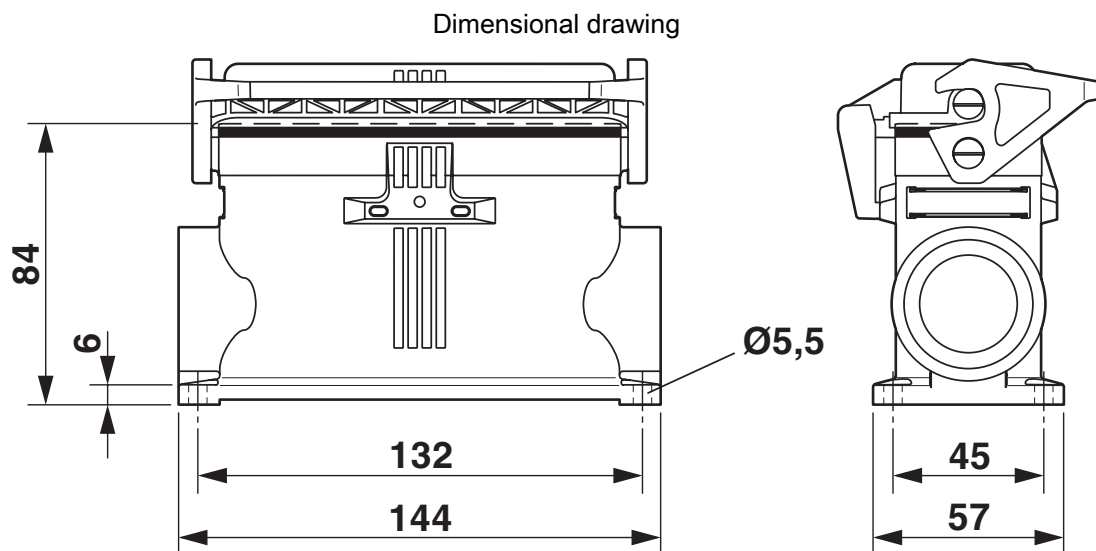
HC-EVO-B24-SHWSC-2SSM40-PLRBK - Housing



1407664

<https://www.phoenixcontact.com/us/products/1407664>

Drawings



Dimensional drawing


1407664


<https://www.phoenixcontact.com/us/products/1407664>


Approvals


To download certificates, visit the product detail page: <https://www.phoenixcontact.com/us/products/1407664>

**DNV**
Approval ID: TAE000037S

**EAC**
Approval ID: RU C-DE.AI30.B.01102

**EAC**
Approval ID: RU C-DE.BL08.B.00511

**cUL Recognized**
Approval ID: E255026

**UL Recognized**
Approval ID: E255026

cULus Recognized

HC-EVO-B24-SHWSC-2SSM40-PLRBK - Housing



1407664

<https://www.phoenixcontact.com/us/products/1407664>

Classifications

ECLASS

ECLASS-11.0	27440202
ECLASS-12.0	27440202
ECLASS-13.0	27440202

ETIM

ETIM 9.0	EC000437
----------	----------

UNSPSC

UNSPSC 21.0	31261500
-------------	----------

Environmental product compliance

EU RoHS	
Fulfills EU RoHS substance requirements	Yes, No exemptions
China RoHS	
Environment friendly use period (EFUP)	EFUP-E
	No hazardous substances above the limits
EU REACH SVHC	
REACH candidate substance (CAS No.)	No substance above 0.1 wt%

HC-EVO-B24-SHWSC-2SSM40-PLRBK - Housing



1407664

<https://www.phoenixcontact.com/us/products/1407664>

Accessories

HC-B24-SP-RBK - Profile gasket

1407709

<https://www.phoenixcontact.com/us/products/1407709>

Profile gasket for HEAVYCON EVO supporting base element type B24



HC-B24-SL-PLBK - Housing brackets

1407701

<https://www.phoenixcontact.com/us/products/1407701>

Replacement single locking latch for HEAVYCON EVO housing type B24, PA



HC-EVO-B24-SHWSC-2SSM40-PLRBK - Housing

1407664

<https://www.phoenixcontact.com/us/products/1407664>



HC-B24-BC-HI-PLBK - Protective cover

1407695

<https://www.phoenixcontact.com/us/products/1407695>

Protective cover B24, for single locking latch, protective cover material: PC, height: 19 mm, seal: no



REDUC-K-KV-M40/M25 BK - Reducing adapter

1410741

<https://www.phoenixcontact.com/us/products/1410741>

Reducing adapter, connecting thread: M40 x 1.5, color: jet black, with flat gasket



HC-EVO-B24-SHWSC-2SSM40-PLRBK - Housing

1407664

<https://www.phoenixcontact.com/us/products/1407664>



REDUC-K-KV-M40/M32 BK - Reducing adapter

1410738

<https://www.phoenixcontact.com/us/products/1410738>

Reducing adapter, connecting thread: M40 x 1.5, color: jet black, with flat gasket



US-EMP (20X9) - Snap-in markers

0829439

<https://www.phoenixcontact.com/us/products/0829439>

Snap-in markers, Card, white, unlabeled, can be labeled with: BLUEMARK ID COLOR, BLUEMARK ID, THERMOMARK PRIME, THERMOMARK CARD 2.0, THERMOMARK CARD, mounting type: snapped, lettering field size: 20 x 9 mm, Number of individual labels: 70



HC-EVO-B24-SHWSC-2SSM40-PLRBK - Housing

1407664

<https://www.phoenixcontact.com/us/products/1407664>



G-INS-M40-M68N-PNES-BK - Cable gland

1411137

<https://www.phoenixcontact.com/us/products/1411137>



Cable gland, material for screw connection: PA, application: Standard, external cable diameter 19 mm ... 28 mm, shielding: no, connecting thread: M40 x 1.5, color: jet black RAL 9005

US-EMP (20X9) CUS - Snap-in markers

0830028

<https://www.phoenixcontact.com/us/products/0830028>



Snap-in markers, can be ordered: by card, white, labeled according to customer specifications, mounting type: snapped into marker carrier, lettering field size: 20 x 9 mm, Number of individual labels: 70

HC-EVO-B24-SHWSC-2SSM40-PLRBK - Housing

1407664

<https://www.phoenixcontact.com/us/products/1407664>



HC-STA-B24-DC-PL - Protective cover

1421103

<https://www.phoenixcontact.com/us/products/1421103>



Protective cover, design: B24

A-INSP-M40-65N-P-BK - Screw plug

1415210

<https://www.phoenixcontact.com/us/products/1415210>

Screw plug, material for screw connection: PA, connecting thread: M40 x 1.5, color: jet black RAL 9005, with O-ring



Phoenix Contact 2024 © - all rights reserved
<https://www.phoenixcontact.com>

Phoenix Contact USA
586 Fulling Mill Road
Middletown, PA 17057, United States
(+717) 944-1300
info@phoenixcon.com