

HC-COM-K-AML-GW - Housing

1408368

<https://www.phoenixcontact.com/us/products/1408368>



Please be informed that the data shown in this PDF document is generated from our online catalog. Please find the complete data in the user documentation. Our general terms of use for downloads are valid.

Panel mounting base with single locking engagement nose, angled design



Commercial data

Item number	1408368
Packing unit	1 pc
Note	Made to order (non-returnable)
Sales key	BF59
Product key	BF7AAH
Catalog page	Page 651 (C-2-2017)
GTIN	4046356618106
Weight per piece (including packing)	40.2 g
Weight per piece (excluding packing)	40.2 g
Customs tariff number	85389099
Country of origin	CN

HC-COM-K-AML-GW - Housing

1408368

<https://www.phoenixcontact.com/us/products/1408368>

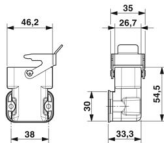


Technical data

Product properties

Product type	Housing with locking latch
Housing type	Panel mounting base
Product family	HC-COM
Application	Standard
Type	COM
Pg screw connection	none

Dimensions

Dimensional drawing	
Width	46 mm
Height	33.5 mm
Length	54.5 mm

Installation dimensions

Width of the assembly cutout	24 mm
Length of the assembly cutout	26 mm

Material specifications

Flammability rating according to UL 94	V0
Seal material	NBR
Housing material	PC
Locking latch material	Stainless steel

Mechanical properties

Mechanical data

Locking type	Latch
--------------	-------

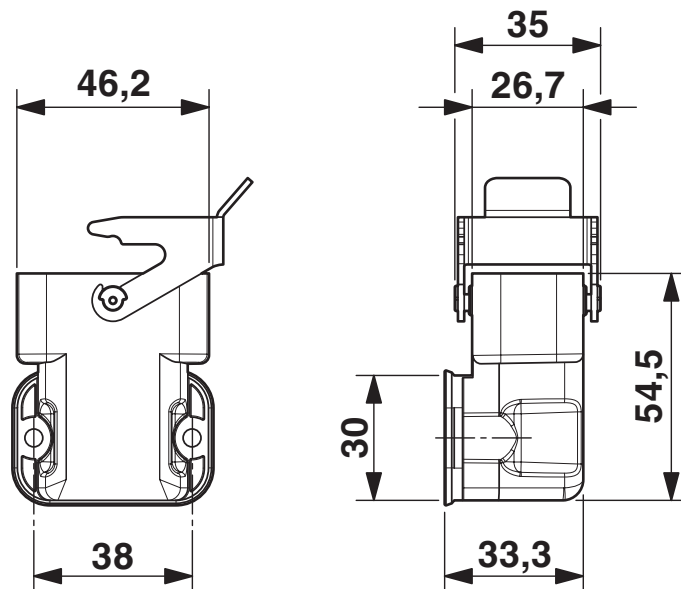
Environmental and real-life conditions

Ambient conditions

Degree of protection	IP65
	IP66
Ambient temperature (operation)	-40 °C ... 125 °C

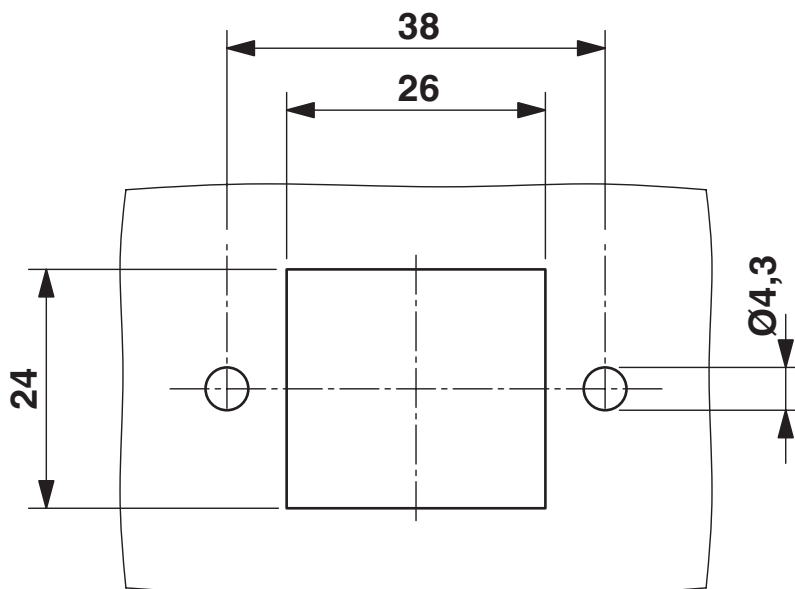
Drawings

Dimensional drawing



Dimensional drawing

Dimensional drawing



Mounting cutout

1408368

<https://www.phoenixcontact.com/us/products/1408368>

Classifications

ECLASS

ECLASS-11.0	27440202
ECLASS-13.0	27440202

ETIM

ETIM 8.0	EC000437
----------	----------

UNSPSC

UNSPSC 21.0	31261500
-------------	----------

Environmental product compliance

EU RoHS	
Fulfills EU RoHS substance requirements	Yes, No exemptions
China RoHS	
Environment friendly use period (EFUP)	EFUP-E
	No hazardous substances above the limits
EU REACH SVHC	
REACH candidate substance (CAS No.)	No substance above 0.1 wt%