

HC-ADV-B06-SHFH-2STM20-EEE - Housing



1408630

<https://www.phoenixcontact.com/us/products/1408630>

Please be informed that the data shown in this PDF document is generated from our online catalog. Please find the complete data in the user documentation. Our general terms of use for downloads are valid.



HEAVYCON ADVANCE B6 box mounting base, for M6 screw locking, salt-water-resistant aluminum, with 2 x M20 thread, without surface coating

Commercial data

Item number	1408630
Packing unit	1 pc
Note	Made to order (non-returnable)
Sales key	BF58
Product key	BF7AAA
Catalog page	Page 482 (C-4-2013)
GTIN	4046356582254
Weight per piece (including packing)	415.3 g
Weight per piece (excluding packing)	415.3 g
Customs tariff number	85389099
Country of origin	CN

HC-ADV-B06-SHFH-2STM20-EEE - Housing



1408630

<https://www.phoenixcontact.com/us/products/1408630>

Technical data

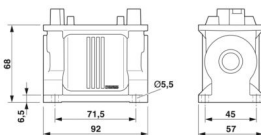
Notes

General	for contact inserts HC-B06, BB10, DD24, M
---------	-------------------------------------------

Product properties

Product type	Housing with screw locking
Housing type	Box mounting bases
Application	Offshore
Type	B6
No. of cable outlets	2
Type of the screw connection	2x M20
Shielded	yes
Cable outlet	lateral
Pg screw connection	none

Dimensions

Dimensional drawing	
Width	57 mm
Height	68 mm
Length	92 mm

Material specifications

Housing material	Die-cast aluminum, corrosion resistant
Housing surface material	uncoated

Environmental and real-life conditions

Ambient conditions

Degree of protection	IP66
	IP68 (0.2 bar/24 h)
	IP69K
Enclosure rating (NEMA)	4 (NEMA 250)
	4X (NEMA 250)
	6P (NEMA 250)
	12 (NEMA 250)
Impact strength	IK09
Ambient temperature (operation)	-40 °C ... 125 °C

Mechanical properties

HC-ADV-B06-SHFH-2STM20-EEE - Housing



1408630

<https://www.phoenixcontact.com/us/products/1408630>

Mechanical data

Type of the screw connection	2x M20
Locking type	Nut

Mounting

Assembly note	To ensure optimum shielding, any insulating powder coating must be removed from the housing support area on the control cabinet panel
---------------	---------------------------------------------------------------------------------------------------------------------------------------

HC-ADV-B06-SHFH-2STM20-EEE - Housing

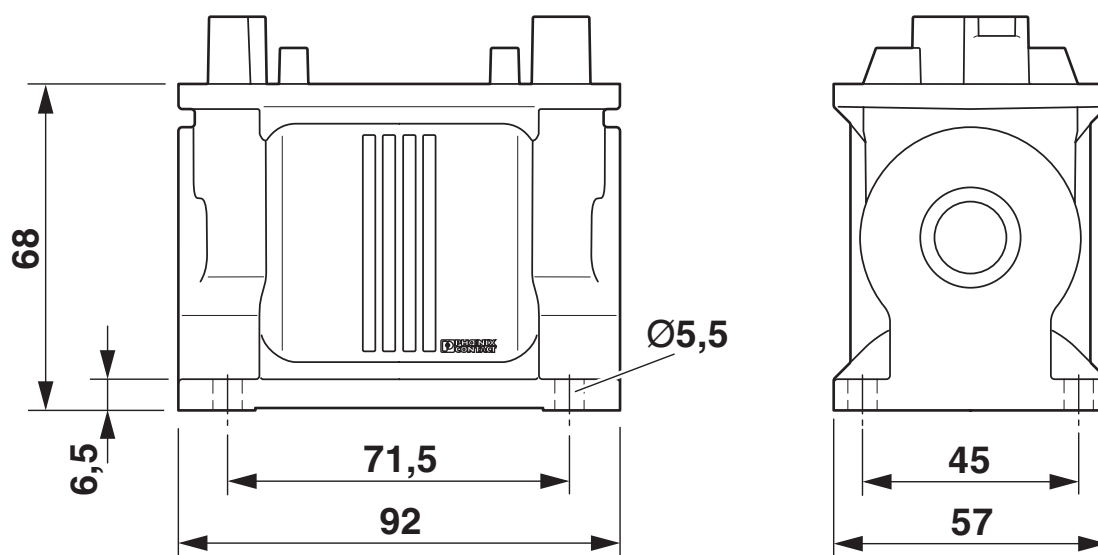
1408630

<https://www.phoenixcontact.com/us/products/1408630>



Drawings

Dimensional drawing



Dimensional drawing

HC-ADV-B06-SHFH-2STM20-EEE - Housing

1408630

<https://www.phoenixcontact.com/us/products/1408630>



Classifications

ECLASS

ECLASS-11.0	27440202
ECLASS-13.0	27440202

Environmental product compliance

EU REACH SVHC

REACH candidate substance (CAS No.)	No substance above 0.1 wt%
-------------------------------------	----------------------------

HC-ADV-B06-SHFH-2STM20-EEE - Housing



1408630

<https://www.phoenixcontact.com/us/products/1408630>

Accessories

HC-B 6-TMS-SD-IP65 - Protective cover

1690778

<https://www.phoenixcontact.com/us/products/1690778>



HEAVYCON ADVANCE IP65 protective cover B6, for panel mounting side, with screw locking, with retaining cord, diameter of retaining cord eyelet 3 mm

HC-B 6-TMS-SD-IP50 - Protective cover

1690736

<https://www.phoenixcontact.com/us/products/1690736>



Protective cover B6, with clip locking, protective cover material: PA, height: 31.2 mm, seal: no, with lanyard

HC-ADV-B06-SHFH-2STM20-EEE - Housing

1408630

<https://www.phoenixcontact.com/us/products/1408630>



G-INS-M20-S68N-PNES-GY - Cable gland

1411125

<https://www.phoenixcontact.com/us/products/1411125>



Cable gland, material for screw connection: PA, application: Standard, external cable diameter 6 mm ... 12 mm, shielding: no, connecting thread: M20 x 1.5, color: silver-grey RAL 7001

G-INS-M20-S68N-PNES-BK - Cable gland

1411133

<https://www.phoenixcontact.com/us/products/1411133>



Cable gland, material for screw connection: PA, application: Standard, external cable diameter 6 mm ... 12 mm, shielding: no, connecting thread: M20 x 1.5, color: jet black RAL 9005

HC-ADV-B06-SHFH-2STM20-EEE - Housing

1408630

<https://www.phoenixcontact.com/us/products/1408630>



G-INS-M20-S68N-NNES-S - Cable gland

1411163

<https://www.phoenixcontact.com/us/products/1411163>



Cable gland, material for screw connection: Brass, nickel-plated, application: Standard, external cable diameter 6 mm ... 12 mm, shielding: no, connecting thread: M20 x 1.5, color: silver, with O-ring

HC-M-KV-M20(11-16) - Cable gland

1645998

<https://www.phoenixcontact.com/us/products/1645998>



Metal screw connection up to 5 bar, thread length: 6 mm, cable diameter: 11 - 16 mm, WAF 27, screw connection: M20

HC-ADV-B06-SHFH-2STM20-EEE - Housing

1408630

<https://www.phoenixcontact.com/us/products/1408630>



G-INSEC-M20-S68N-NCRS-S - Cable gland

1411189

<https://www.phoenixcontact.com/us/products/1411189>



Cable gland, material for screw connection: Brass, nickel-plated, application: EMC, external cable diameter 9 mm ... 13 mm, shielding: yes, connecting thread: M20 x 1.5, color: silver, with O-ring

G-INESR-M20-S68N-NEPDS-S - Cable gland

1415192

<https://www.phoenixcontact.com/us/products/1415192>



Cable gland, material for screw connection: Brass, nickel-plated, application: Standard, external cable diameter 6 mm ... 13 mm, shielding: no, connecting thread: M20 x 1.5, color: silver, with external strain relief, with O-ring

HC-ADV-B06-SHFH-2STM20-EEE - Housing

1408630

<https://www.phoenixcontact.com/us/products/1408630>



HC-M-KV-T-M20 - Cable gland

1646188

<https://www.phoenixcontact.com/us/products/1646188>

Metal screw connection with cable bend protection and strain relief, thread length: 6 mm, cable sealing area: 7.5 - 15 mm, clamping area: 10 - 16 mm, SW 24, screw connection: M20



REDUC-M-KV-M20/M16 - Reducing adapter

1647611

<https://www.phoenixcontact.com/us/products/1647611>

Reducing adapter, connecting thread: M20 x 1.5, color: silver, with O-ring



HC-ADV-B06-SHFH-2STM20-EEE - Housing

1408630

<https://www.phoenixcontact.com/us/products/1408630>



ENLAR-M-KV-M20/M25 - Extension adapter

1647666

<https://www.phoenixcontact.com/us/products/1647666>

Extension adapter, connecting thread: M20 x 1.5, color: silver, with O-ring



HC-M-BS-M20 - Screw plug

1645846

<https://www.phoenixcontact.com/us/products/1645846>

Screw plug, material for screw connection: Brass, nickel-plated, connecting thread: M20 x 1.5, color: silver



Phoenix Contact 2024 © - all rights reserved
<https://www.phoenixcontact.com>

Phoenix Contact USA
586 Fulling Mill Road
Middletown, PA 17057, United States
(+717) 944-1300
info@phoenixcon.com