

HC-ADV-B06-CHFh-1TTM25-EEE - Housing



1408698

<https://www.phoenixcontact.com/sg/products/1408698>

Please be informed that the data shown in this PDF document is generated from our online catalog. Please find the complete data in the user documentation. Our general terms of use for downloads are valid.



HEAVYCON ADVANCE B6 coupling housing, for M6 screw locking, salt-water-resistant aluminum, with 1 x M25 thread, straight cable outlet, without surface coating

Commercial data

Item number	1408698
Packing unit	1 pc
Minimum order quantity	1 pc
Note	Made to order (non-returnable)
Sales key	*****
Product key	BF7AAA
Catalog page	Page 234 (NTK-2012)
GTIN	4046356583312
Weight per piece (including packing)	416.5 g
Weight per piece (excluding packing)	416.5 g
Customs tariff number	85389099
Country of origin	CN

HC-ADV-B06-CHFh-1TTM25-EEE - Housing



1408698

<https://www.phoenixcontact.com/sg/products/1408698>

Technical data

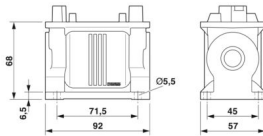
Notes

General	for contact inserts HC-B06, BB10, DD24, M
---------	---

Product properties

Product type	Housing with screw locking
Housing type	Coupling housings
Application	Offshore
Type	B6
No. of cable outlets	1
Type of the screw connection	1x M25
Fixing screws	M6
Shielded	yes
Cable outlet	straight
Pg screw connection	none

Dimensions

Dimensional drawing	
Width	57 mm
Height	68 mm
Length	92 mm

Material specifications

Housing material	Die-cast aluminum, corrosion resistant
Housing surface material	uncoated

Environmental and real-life conditions

Ambient conditions

Degree of protection	IP66
	IP68 (0.2 bar/24 h)
	IP69K
Enclosure rating (NEMA)	4 (NEMA 250)
	4X (NEMA 250)
	6P (NEMA 250)
	12 (NEMA 250)
Impact strength	IK09
Ambient temperature (operation)	-40 °C ... 125 °C

HC-ADV-B06-CHFh-1TTM25-EEE - Housing



1408698

<https://www.phoenixcontact.com/sg/products/1408698>

Mechanical properties

Mechanical data

Type of the screw connection	1x M25
Locking type	Nut

Mounting

Fixing screws	M6
---------------	----

HC-ADV-B06-CHFh-1TTM25-EEE - Housing

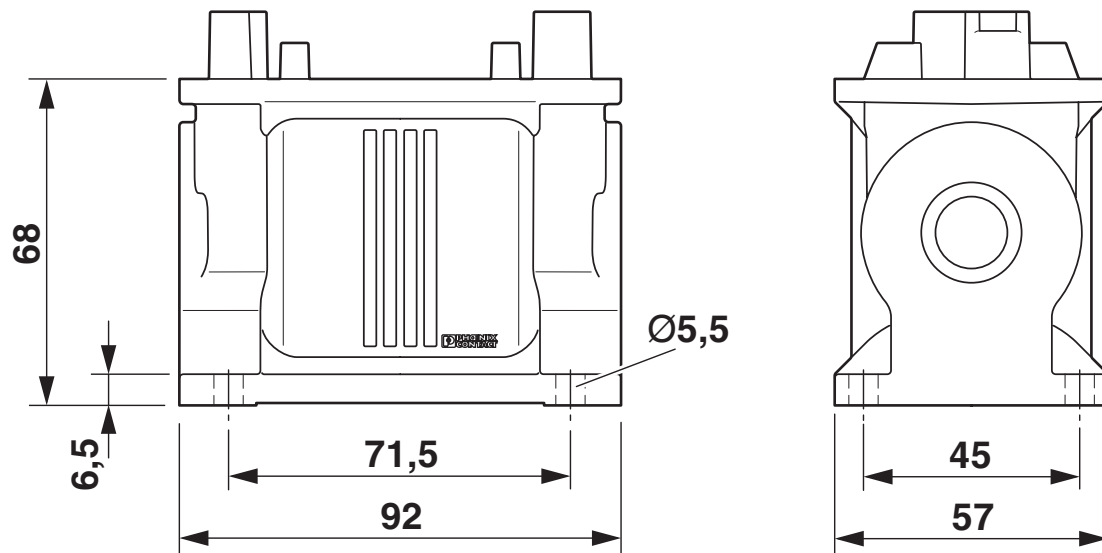
1408698

<https://www.phoenixcontact.com/sg/products/1408698>



Drawings

Dimensional drawing



Dimensional drawing

HC-ADV-B06-CHFh-1TTM25-EEE - Housing



1408698

<https://www.phoenixcontact.com/sg/products/1408698>

Classifications

ECLASS

ECLASS-11.0	27440202
ECLASS-13.0	27440202

1408698

<https://www.phoenixcontact.com/sg/products/1408698>

Environmental product compliance

EU REACH SVHC

REACH candidate substance (CAS No.)	No substance above 0.1 wt%
-------------------------------------	----------------------------

Phoenix Contact 2024 © - all rights reserved
<https://www.phoenixcontact.com>

PHOENIX CONTACT SEA Pte. Ltd.
105 Eunos Avenue 3, #04-00
Singapore 409836
+65 6228 4900
marketing@phoenixcontact.com.sg