

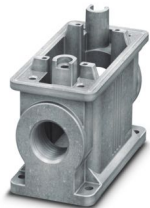
HC-ADV-B10-SHFH-2STM25-EEE - Housing



1408753

<https://www.phoenixcontact.com/us/products/1408753>

Please be informed that the data shown in this PDF document is generated from our online catalog. Please find the complete data in the user documentation. Our general terms of use for downloads are valid.



HEAVYCON ADVANCE B10 box mounting base, for M6 screw locking, salt-water-resistant aluminum, with 2 x M25 thread, without surface coating

Commercial data

Item number	1408753
Packing unit	1 pc
Note	Made to order (non-returnable)
Sales key	BF58
Product key	BF7AAA
Catalog page	Page 490 (C-4-2013)
GTIN	4046356583367
Weight per piece (including packing)	425.1 g
Weight per piece (excluding packing)	425.1 g
Customs tariff number	85389099
Country of origin	CN

HC-ADV-B10-SHFH-2STM25-EEE - Housing



1408753

<https://www.phoenixcontact.com/us/products/1408753>

Technical data

Notes

General	For contact inserts HC-B10, BB18, DD42, M, K8/24
---------	--------------------------------------------------

Product properties

Product type	Housing with screw locking
Housing type	Box mounting bases
Application	Offshore
Type	B10
No. of cable outlets	2
Type of the screw connection	2x M25
Shielded	yes
Cable outlet	lateral
Pg screw connection	none

Dimensions

Dimensional drawing	
Width	45 mm
Height	68 mm
Length	105 mm

Material specifications

Housing material	Die-cast aluminum, corrosion resistant
Housing surface material	uncoated

Environmental and real-life conditions

Ambient conditions

Degree of protection	IP66
	IP68 (0.2 bar/24 h)
	IP69K
Enclosure rating (NEMA)	4 (NEMA 250)
	4X (NEMA 250)
	6P (NEMA 250)
	12 (NEMA 250)
Impact strength	IK09
Ambient temperature (operation)	-40 °C ... 125 °C

Mechanical properties

HC-ADV-B10-SHFH-2STM25-EEE - Housing



1408753

<https://www.phoenixcontact.com/us/products/1408753>

Mechanical data

Type of the screw connection	2x M25
Locking type	Nut

Mounting

Assembly note	To ensure optimum shielding, any insulating powder coating must be removed from the housing support area on the control cabinet panel
---------------	---------------------------------------------------------------------------------------------------------------------------------------

HC-ADV-B10-SHFH-2STM25-EEE - Housing

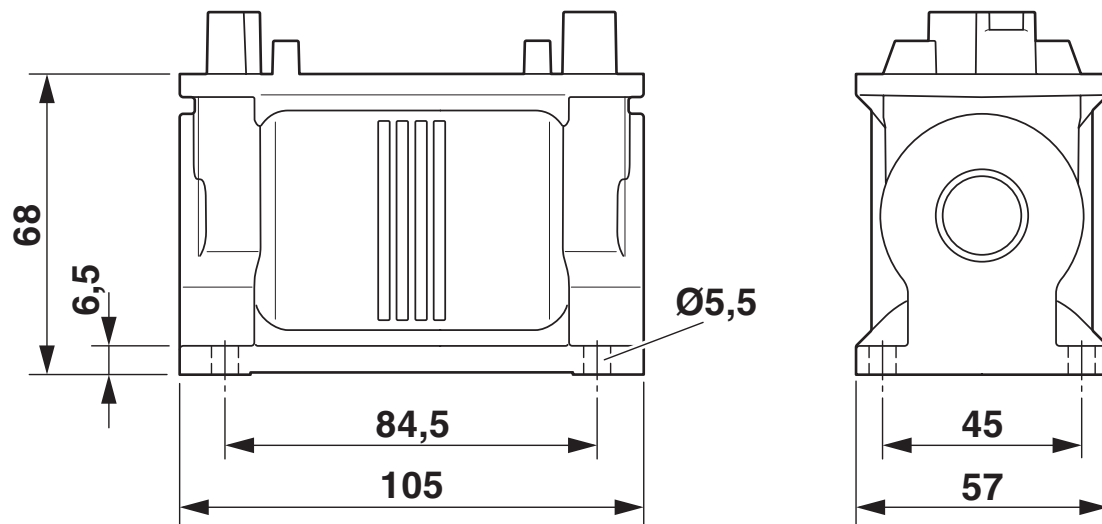
1408753

<https://www.phoenixcontact.com/us/products/1408753>



Drawings

Dimensional drawing



Dimensional drawing

HC-ADV-B10-SHFH-2STM25-EEE - Housing

1408753

<https://www.phoenixcontact.com/us/products/1408753>



Classifications

ECLASS

ECLASS-11.0	27440202
ECLASS-13.0	27440202

HC-ADV-B10-SHFH-2STM25-EEE - Housing



1408753

<https://www.phoenixcontact.com/us/products/1408753>

Environmental product compliance

EU REACH SVHC

REACH candidate substance (CAS No.)	No substance above 0.1 wt%
-------------------------------------	----------------------------

HC-ADV-B10-SHFH-2STM25-EEE - Housing



1408753

<https://www.phoenixcontact.com/us/products/1408753>

Accessories

HC-B 10-TMS-SD-IP50 - Protective cover

1690749

<https://www.phoenixcontact.com/us/products/1690749>



Protective cover B10, with clip locking, protective cover material: PA, height: 31.2 mm, seal: no, with lanyard

HC-B 10-TMS-SD-IP65 - Protective cover

1690781

<https://www.phoenixcontact.com/us/products/1690781>



HEAVYCON ADVANCE IP65 protective cover B10, for panel mounting side, with screw locking, with retaining cord, diameter of retaining cord eyelet 3 mm

HC-ADV-B10-SHFH-2STM25-EEE - Housing

1408753

<https://www.phoenixcontact.com/us/products/1408753>



G-INS-M25-M68N-PNES-GY - Cable gland

1411126

<https://www.phoenixcontact.com/us/products/1411126>



Cable gland, material for screw connection: PA, application: Standard, external cable diameter 11 mm ... 17 mm, shielding: no, connecting thread: M25 x 1.5, color: silver-grey RAL 7001

G-INS-M25-M68N-PNES-BK - Cable gland

1411134

<https://www.phoenixcontact.com/us/products/1411134>



Cable gland, material for screw connection: PA, application: Standard, external cable diameter 11 mm ... 17 mm, shielding: no, connecting thread: M25 x 1.5, color: jet black RAL 9005

HC-ADV-B10-SHFH-2STM25-EEE - Housing

1408753

<https://www.phoenixcontact.com/us/products/1408753>



G-INS-M25-M68N-NNES-S - Cable gland

1411165

<https://www.phoenixcontact.com/us/products/1411165>



Cable gland, material for screw connection: Brass, nickel-plated, application: Standard, external cable diameter 11 mm ... 17 mm, shielding: no, connecting thread: M25 x 1.5, color: silver, with O-ring

HC-M-KV-M25(14-21) - Cable gland

1646007

<https://www.phoenixcontact.com/us/products/1646007>



Metal screw connection up to 5 bar, thread length: 7 mm, cable diameter: 14 - 21 mm, WAF 34, screw connection: M25

HC-ADV-B10-SHFH-2STM25-EEE - Housing

1408753

<https://www.phoenixcontact.com/us/products/1408753>



G-INSEC-M25-S68N-NCRS-S - Cable gland

1411190

<https://www.phoenixcontact.com/us/products/1411190>



Cable gland, material for screw connection: Brass, nickel-plated, application: EMC, external cable diameter 11 mm ... 16 mm, shielding: yes, connecting thread: M25 x 1.5, color: silver, with O-ring

G-INESR-M25-M68N-NEPDS-S - Cable gland

1415193

<https://www.phoenixcontact.com/us/products/1415193>



Cable gland, material for screw connection: Brass, nickel-plated, application: Standard, external cable diameter 9 mm ... 17 mm, shielding: no, connecting thread: M25 x 1.5, color: silver, with external strain relief, with O-ring

HC-ADV-B10-SHFH-2STM25-EEE - Housing

1408753

<https://www.phoenixcontact.com/us/products/1408753>



HC-M-KV-T-M25 - Cable gland

1646191

<https://www.phoenixcontact.com/us/products/1646191>

Metal screw connection with cable bend protection and strain relief, thread length: 7 mm, cable sealing area: 10 - 19 mm, clamping area: 14 - 21 mm, SW 30, screw connection: M25



REDUC-M-KV-M25/M20 - Reducing adapter

1647624

<https://www.phoenixcontact.com/us/products/1647624>

Reducing adapter, connecting thread: M25 x 1.5, color: silver, with O-ring



HC-ADV-B10-SHFH-2STM25-EEE - Housing

1408753

<https://www.phoenixcontact.com/us/products/1408753>



ENLAR-M-KV-M25/M32 - Extension adapter

1647679

<https://www.phoenixcontact.com/us/products/1647679>

Extension adapter, connecting thread: M25 x 1.5, color: silver, with O-ring



HC-M-BS-M25 - Screw plug

1645859

<https://www.phoenixcontact.com/us/products/1645859>

Screw plug, material for screw connection: Brass, nickel-plated, connecting thread: M25 x 1.5, color: silver



Phoenix Contact 2024 © - all rights reserved
<https://www.phoenixcontact.com>

Phoenix Contact USA
586 Fulling Mill Road
Middletown, PA 17057, United States
(+717) 944-1300
info@phoenixcon.com