

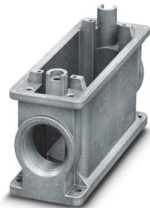
HC-ADV-B24-CHFHH-1TTM25-EEE - Housing



1408986

<https://www.phoenixcontact.com/us/products/1408986>

Please be informed that the data shown in this PDF document is generated from our online catalog. Please find the complete data in the user documentation. Our general terms of use for downloads are valid.



HEAVYCON ADVANCE B24 coupling housing, for M6 screw locking, salt-water-resistant aluminum, with 1 x M25 thread, straight cable outlet, without surface coating

Commercial data

Item number	1408986
Packing unit	1 pc
Note	Made to order (non-returnable)
Sales key	BF58
Product key	BF7AAA
Catalog page	Page 235 (NTK-2012)
GTIN	4046356583633
Weight per piece (including packing)	551.3 g
Weight per piece (excluding packing)	551.3 g
Customs tariff number	85389099
Country of origin	CN

HC-ADV-B24-CHF-1TTM25-EEE - Housing



1408986

<https://www.phoenixcontact.com/us/products/1408986>

Technical data

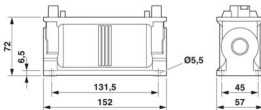
Notes

General	For contact inserts HC-B24, BB46, D64, DD104, M, K
---------	--

Product properties

Product type	Housing with screw locking
Housing type	Coupling housings
Application	Offshore
Type	B24
No. of cable outlets	1
Type of the screw connection	1x M25
Fixing screws	M6
Shielded	yes
Cable outlet	straight
Pg screw connection	none

Dimensions

Dimensional drawing	
Width	45 mm
Height	72 mm
Length	152 mm

Material specifications

Housing material	Die-cast aluminum, corrosion resistant
Housing surface material	uncoated

Environmental and real-life conditions

Ambient conditions

Degree of protection	IP66
	IP68 (0.2 bar/24 h)
	IP69K
Enclosure rating (NEMA)	4 (NEMA 250)
	4X (NEMA 250)
	6P (NEMA 250)
	12 (NEMA 250)
Impact strength	IK09
Ambient temperature (operation)	-40 °C ... 125 °C

HC-ADV-B24-CHFh-1TTM25-EEE - Housing



1408986

<https://www.phoenixcontact.com/us/products/1408986>

Mechanical properties

Mechanical data	
Type of the screw connection	1x M25
Locking type	Nut

Mounting

Fixing screws	M6
---------------	----

HC-ADV-B24-CHF-1TTM25-EEE - Housing

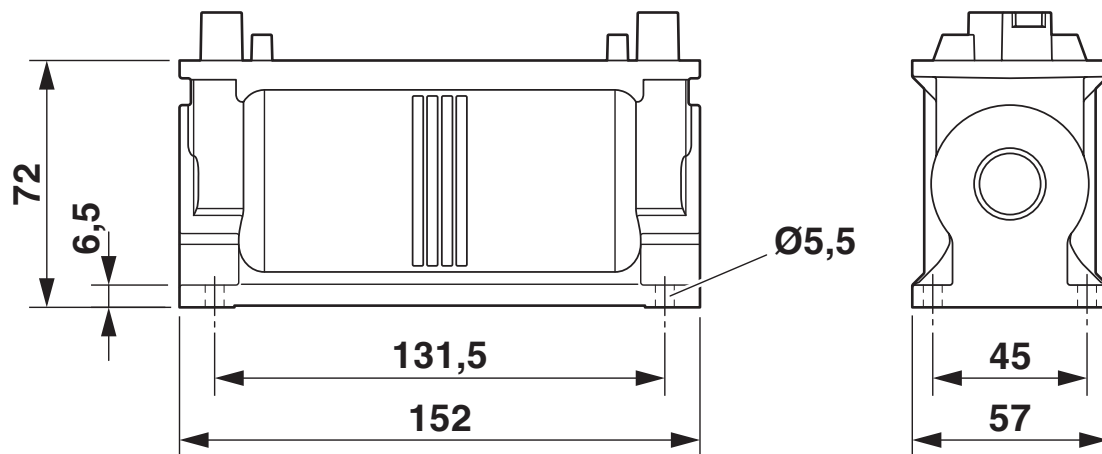
1408986

<https://www.phoenixcontact.com/us/products/1408986>



Drawings

Dimensional drawing



Dimensional drawing

HC-ADV-B24-CHFHH-1TTM25-EEE - Housing

1408986

<https://www.phoenixcontact.com/us/products/1408986>



Classifications

ECLASS

ECLASS-11.0	27440202
ECLASS-13.0	27440202

Environmental product compliance

EU REACH SVHC

REACH candidate substance (CAS No.)	No substance above 0.1 wt%
-------------------------------------	----------------------------

HC-ADV-B24-CHFh-1TTM25-EEE - Housing



1408986

<https://www.phoenixcontact.com/us/products/1408986>

Accessories

HC-B 24-TMS-SD-IP65 - Protective cover

1690804

<https://www.phoenixcontact.com/us/products/1690804>



HEAVYCON ADVANCE B24 IP65 protective cover, for panel mounting side, with screw locking, with retaining cord, diameter of retaining cord eyelet: 3 mm

HC-B 24-TMS-SD-IP50 - Protective cover

1690765

<https://www.phoenixcontact.com/us/products/1690765>



Protective cover B24, with clip locking, protective cover material: PA, height: 31.2 mm, seal: no, with lanyard

HC-ADV-B24-CHFHH-1TTM25-EEE - Housing



1408986

<https://www.phoenixcontact.com/us/products/1408986>

G-INS-M25-M68N-PNES-GY - Cable gland

1411126

<https://www.phoenixcontact.com/us/products/1411126>



Cable gland, material for screw connection: PA, application: Standard, external cable diameter 11 mm ... 17 mm, shielding: no, connecting thread: M25 x 1.5, color: silver-grey RAL 7001

G-INS-M25-M68N-PNES-BK - Cable gland

1411134

<https://www.phoenixcontact.com/us/products/1411134>



Cable gland, material for screw connection: PA, application: Standard, external cable diameter 11 mm ... 17 mm, shielding: no, connecting thread: M25 x 1.5, color: jet black RAL 9005

HC-ADV-B24-CHFHH-1TTM25-EEE - Housing

1408986

<https://www.phoenixcontact.com/us/products/1408986>



G-INS-M25-M68N-NNES-S - Cable gland

1411165

<https://www.phoenixcontact.com/us/products/1411165>



Cable gland, material for screw connection: Brass, nickel-plated, application: Standard, external cable diameter 11 mm ... 17 mm, shielding: no, connecting thread: M25 x 1.5, color: silver, with O-ring

HC-M-KV-M25(14-21) - Cable gland

1646007

<https://www.phoenixcontact.com/us/products/1646007>



Metal screw connection up to 5 bar, thread length: 7 mm, cable diameter: 14 - 21 mm, WAF 34, screw connection: M25

HC-ADV-B24-CHFh-1TTM25-EEE - Housing



1408986

<https://www.phoenixcontact.com/us/products/1408986>

G-INSEC-M25-S68N-NCRS-S - Cable gland

1411190

<https://www.phoenixcontact.com/us/products/1411190>



Cable gland, material for screw connection: Brass, nickel-plated, application: EMC, external cable diameter 11 mm ... 16 mm, shielding: yes, connecting thread: M25 x 1.5, color: silver, with O-ring

G-INESR-M25-M68N-NEPDS-S - Cable gland

1415193

<https://www.phoenixcontact.com/us/products/1415193>



Cable gland, material for screw connection: Brass, nickel-plated, application: Standard, external cable diameter 9 mm ... 17 mm, shielding: no, connecting thread: M25 x 1.5, color: silver, with external strain relief, with O-ring

HC-ADV-B24-CHFh-1TTM25-EEE - Housing



1408986

<https://www.phoenixcontact.com/us/products/1408986>

HC-M-KV-T-M25 - Cable gland

1646191

<https://www.phoenixcontact.com/us/products/1646191>

Metal screw connection with cable bend protection and strain relief, thread length: 7 mm, cable sealing area: 10 - 19 mm, clamping area: 14 - 21 mm, SW 30, screw connection: M25



REDUC-M-KV-M25/M20 - Reducing adapter

1647624

<https://www.phoenixcontact.com/us/products/1647624>

Reducing adapter, connecting thread: M25 x 1.5, color: silver, with O-ring



HC-ADV-B24-CHFh-1TTM25-EEE - Housing

1408986

<https://www.phoenixcontact.com/us/products/1408986>



ENLAR-M-KV-M25/M32 - Extension adapter

1647679

<https://www.phoenixcontact.com/us/products/1647679>

Extension adapter, connecting thread: M25 x 1.5, color: silver, with O-ring



HC-M-BS-M25 - Screw plug

1645859

<https://www.phoenixcontact.com/us/products/1645859>

Screw plug, material for screw connection: Brass, nickel-plated, connecting thread: M25 x 1.5, color: silver



Phoenix Contact 2024 © - all rights reserved
<https://www.phoenixcontact.com>

Phoenix Contact USA
586 Fulling Mill Road
Middletown, PA 17057, United States
(+717) 944-1300
info@phoenixcon.com