

HC-HPR-B16-SHFH-2SSM32-EMR-BK - Housing



1411054

<https://www.phoenixcontact.com/us/products/1411054>

Please be informed that the data shown in this PDF document is generated from our online catalog. Please find the complete data in the user documentation. Our general terms of use for downloads are valid.



HEAVYCON B16 box mounting base, for screw locking, HPR series, with 2 x M32 gland, for increased environmental and EMC requirements

Your advantages

- Vibration and shock: IEC 61373/EN 50155, category 1, class 1B

Commercial data

Item number	1411054
Packing unit	1 pc
Minimum order quantity	1 pc
Sales key	BF60
Product key	BF7AAI
Catalog page	Page 628 (C-4-2015)
GTIN	4046356921640
Weight per piece (including packing)	966.7 g
Weight per piece (excluding packing)	966 g
Customs tariff number	85389099
Country of origin	CN

Technical data

Notes

General	For contact inserts HC-B16, BB32, BBB40, D40, DD72, HS6, M, K
---------	---

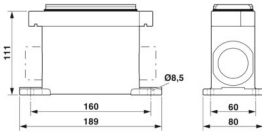
Product properties

Product type	Housing with screw locking
Housing type	Box mounting bases
Product family	HC-HPR-B
Series	HPR-B16
Application	Railway applications
Type	B16
No. of cable outlets	2
Type of the screw connection	2x M32
Type	Tall design
Protective cover	no
Cable outlet	lateral
Pg screw connection	none

Connection data

Tightening torque	10 Nm ... 15 Nm (for M8 mounting screws on the surface-mount housing)
-------------------	---

Dimensions

Dimensional drawing	
Width	80 mm
Height	111 mm
Length	189 mm
Drill hole distance, horizontal	160 mm
Drill hole distance, vertical	60 mm
Hole diameter	8.5 mm

Material specifications

Seal material	NBR
Housing material	die-cast aluminum
Housing surface material	Powder-coated, black

Environmental and real-life conditions

Ambient conditions

HC-HPR-B16-SHFH-2SSM32-EMR-BK - Housing



1411054

<https://www.phoenixcontact.com/us/products/1411054>

Degree of protection	IP66
	IP68 (0.5 bar / 24 h)
	IP69 (ISO 20653:2013-02)
Impact strength	IK09
Ambient temperature (operation)	-40 °C ... 125 °C

Mechanical properties

Mechanical data	
Type of the screw connection	2x M32
Locking type	Nut

HC-HPR-B16-SHFH-2SSM32-EMR-BK - Housing

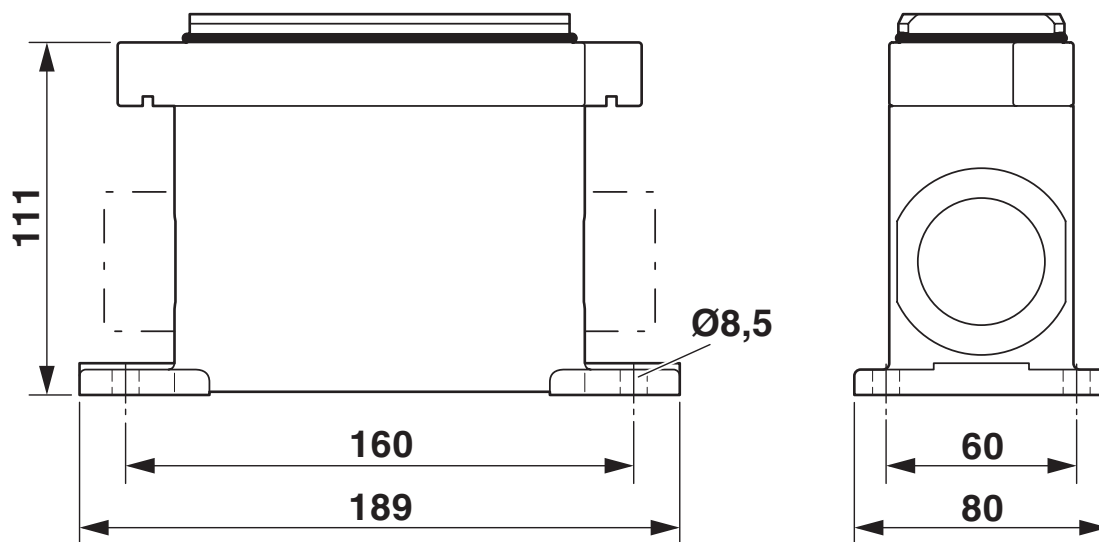


1411054

<https://www.phoenixcontact.com/us/products/1411054>

Drawings

Dimensional drawing




Dimensional drawing

Approvals


To download certificates, visit the product detail page: <https://www.phoenixcontact.com/us/products/1411054>



Approval ID: TAE000037S



Approval ID: RU C-DE.AI30.B.01102



Approval ID: RU C-DE.BL08.B.00511

HC-HPR-B16-SHFH-2SSM32-EMR-BK - Housing



1411054

<https://www.phoenixcontact.com/us/products/1411054>

Classifications

ECLASS

ECLASS-11.0	27440202
ECLASS-12.0	27440202
ECLASS-13.0	27440202

ETIM

ETIM 9.0	EC000437
----------	----------

UNSPSC

UNSPSC 21.0	31261500
-------------	----------

Environmental product compliance

EU RoHS	
Fulfills EU RoHS substance requirements	Yes, No exemptions
China RoHS	
Environment friendly use period (EFUP)	EFUP-E
	No hazardous substances above the limits
EU REACH SVHC	
REACH candidate substance (CAS No.)	No substance above 0.1 wt%

HC-HPR-B16-SHFH-2SSM32-EMR-BK - Housing



1411054

<https://www.phoenixcontact.com/us/products/1411054>

Accessories

G-INS-M32-M68N-PNES-GY - Cable gland

1411127

<https://www.phoenixcontact.com/us/products/1411127>



Cable gland, material for screw connection: PA, application: Standard, external cable diameter 15 mm ... 21 mm, shielding: no, connecting thread: M32 x 1.5, color: silver-grey RAL 7001

G-INS-M32-M68N-PNES-BK - Cable gland

1411136

<https://www.phoenixcontact.com/us/products/1411136>



Cable gland, material for screw connection: PA, application: Standard, external cable diameter 15 mm ... 21 mm, shielding: no, connecting thread: M32 x 1.5, color: jet black RAL 9005

HC-HPR-B16-SHFH-2SSM32-EMR-BK - Housing

1411054

<https://www.phoenixcontact.com/us/products/1411054>



G-INS-M32-M68N-NNES-S - Cable gland

1411166

<https://www.phoenixcontact.com/us/products/1411166>



Cable gland, material for screw connection: Brass, nickel-plated, application: Standard, external cable diameter 15 mm ... 21 mm, shielding: no, connecting thread: M32 x 1.5, color: silver, with O-ring

HC-M-KV-M32(19-27) - Cable gland

1646010

<https://www.phoenixcontact.com/us/products/1646010>



Metal screw connection up to 5 bar, thread length: 8 mm, cable diameter: 19 - 27 mm, WAF 43, screw connection: M32

HC-HPR-B16-SHFH-2SSM32-EMR-BK - Housing



1411054

<https://www.phoenixcontact.com/us/products/1411054>

G-INSEC-M32-M68N-NCRS-S - Cable gland

1411191

<https://www.phoenixcontact.com/us/products/1411191>



Cable gland, material for screw connection: Brass, nickel-plated, application: EMC, external cable diameter 14 mm ... 21 mm, shielding: yes, connecting thread: M32 x 1.5, color: silver, with O-ring

HC-M-KV-Z-M32 - Cable gland

1646162

<https://www.phoenixcontact.com/us/products/1646162>



Metal screw connection with strain relief clamp, thread length: 8 mm, cable sealing area: 18 - 27 mm, clamping area: 19 - 30 mm, SW 40, screw connection: M32

HC-HPR-B16-SHFH-2SSM32-EMR-BK - Housing



1411054

<https://www.phoenixcontact.com/us/products/1411054>

HC-M-KV-T-M32 - Cable gland

1646201

<https://www.phoenixcontact.com/us/products/1646201>

Metal screw connection with cable bend protection and strain relief, thread length: 8 mm, cable sealing area: 18 - 27 mm, clamping area: 20 - 30 mm, SW 40, screw connection: M32



REDUC-M-KV-M32/M25 - Reducing adapter

1647637

<https://www.phoenixcontact.com/us/products/1647637>

Reducing adapter, connecting thread: M32 x 1.5, color: silver, with O-ring



HC-HPR-B16-SHFH-2SSM32-EMR-BK - Housing



1411054

<https://www.phoenixcontact.com/us/products/1411054>

ENLAR-M-KV-M32/M40 - Extension adapter

1647682

<https://www.phoenixcontact.com/us/products/1647682>

Extension adapter, connecting thread: M32 x 1.5, color: silver, with O-ring



HC-M-BS-M32 - Screw plug

1645862

<https://www.phoenixcontact.com/us/products/1645862>

Screw plug, material for screw connection: Brass, nickel-plated, connecting thread: M32 x 1.5, color: silver



HC-HPR-B16-SHFH-2SSM32-EMR-BK - Housing

1411054

<https://www.phoenixcontact.com/us/products/1411054>



HC-HPR-B16-BCLWH-E-BK - Protective cover

1418445

<https://www.phoenixcontact.com/us/products/1418445>



Protective cover B16, with screw locking, material: die-cast aluminum, protective cover material: Al, height: 32 mm, seal: no, for increased environmental and EMC requirements

US-EMLP-HA (20X9) - Plastic label

0830989

<https://www.phoenixcontact.com/us/products/0830989>



Plastic label, Card, white, unlabeled, can be labeled with: BLUEMARK ID COLOR, BLUEMARK ID, THERMOMARK PRIME, THERMOMARK CARD 2.0, THERMOMARK CARD, mounting type: adhesive, lettering field size: 20 x 9 mm, Number of individual labels: 70

HC-HPR-B16-SHFH-2SSM32-EMR-BK - Housing



1411054

<https://www.phoenixcontact.com/us/products/1411054>

US-EMLP-HA (20X9) CUS - Plastic label

0830995

<https://www.phoenixcontact.com/us/products/0830995>

Plastic label, Card, white, labeled, can be labeled with: THERMOMARK CARD, mounting type: adhesive, lettering field size: 20 x 9 mm, Number of individual labels: 70



Phoenix Contact 2024 © - all rights reserved

<https://www.phoenixcontact.com>

Phoenix Contact USA
586 Fulling Mill Road
Middletown, PA 17057, United States
(+717) 944-1300
info@phoenixcon.com