

# HC-HPR-B06-SHFH-2SSM25-EMR-BK - Housing



1411135

<https://www.phoenixcontact.com/us/products/1411135>

Please be informed that the data shown in this PDF document is generated from our online catalog. Please find the complete data in the user documentation. Our general terms of use for downloads are valid.



HEAVYCON B6 box mounting base, for screw locking, HPR series, with 2 x M25 gland, for increased environmental and EMC requirements

## Your advantages

- Vibration and shock: IEC 61373/EN 50155, category 1, class 1B

## Commercial data

|                                      |                     |
|--------------------------------------|---------------------|
| Item number                          | 1411135             |
| Packing unit                         | 1 pc                |
| Minimum order quantity               | 1 pc                |
| Sales key                            | BF60                |
| Product key                          | BF7AAI              |
| Catalog page                         | Page 626 (C-4-2015) |
| GTIN                                 | 4046356921459       |
| Weight per piece (including packing) | 820 g               |
| Weight per piece (excluding packing) | 772.4 g             |
| Customs tariff number                | 85389099            |
| Country of origin                    | CN                  |

# HC-HPR-B06-SHFH-2SSM25-EMR-BK - Housing



1411135

<https://www.phoenixcontact.com/us/products/1411135>

## Technical data

### Notes

|         |  |
|---------|--|
| General | For contact inserts HC-B6, BB10, DD24, M |
|---------|--|

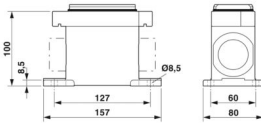
### Product properties

|                              |                            |
|------------------------------|----------------------------|
| Product type                 | Housing with screw locking |
| Housing type                 | Box mounting bases         |
| Product family               | HC-HPR-B                   |
| Series                       | HPR-B6                     |
| Application                  | Railway applications       |
| Type                         | B6                         |
| No. of cable outlets         | 2                          |
| Type of the screw connection | 2x M25                     |
| Type                         | Tall design                |
| Protective cover             | no                         |
| Cable outlet                 | lateral                    |
| Pg screw connection          | none                       |

### Connection data

|                   |   |
|-------------------|---|
| Tightening torque | 10 Nm ... 15 Nm (for M8 mounting screws on the surface-mount housing) |
|-------------------|---|

### Dimensions

|                                 |  |
|---------------------------------|--|
| Dimensional drawing             |  |
| Width                           | 80 mm  |
| Height                          | 100 mm   |
| Length                          | 157 mm   |
| Drill hole distance, horizontal | 127 mm   |
| Drill hole distance, vertical   | 60 mm  |
| Hole diameter                   | 8.5 mm   |

### Material specifications

|                          |                      |
|--------------------------|----------------------|
| Seal material            | NBR                  |
| Housing material         | die-cast aluminum    |
| Housing surface material | Powder-coated, black |

### Environmental and real-life conditions

|                    |
|--------------------|
| Ambient conditions |
|--------------------|

# HC-HPR-B06-SHFH-2SSM25-EMR-BK - Housing



1411135

<https://www.phoenixcontact.com/us/products/1411135>

|                                 |                          |
|---------------------------------|--------------------------|
| Degree of protection            | IP66                     |
|                                 | IP68 (0.5 bar / 24 h)    |
|                                 | IP69 (ISO 20653:2013-02) |
| Impact strength                 | IK09                     |
| Ambient temperature (operation) | -40 °C ... 125 °C        |

## Mechanical properties

|                              |        |
|------------------------------|--------|
| Mechanical data              |        |
| Type of the screw connection | 2x M25 |
| Locking type                 | Nut    |

# HC-HPR-B06-SHFH-2SSM25-EMR-BK - Housing

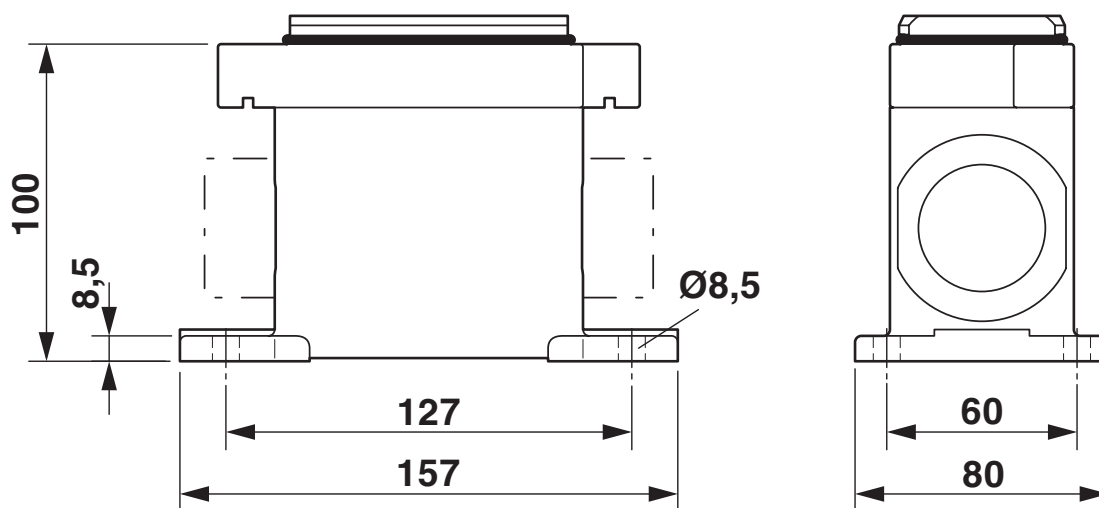


1411135

<https://www.phoenixcontact.com/us/products/1411135>

## Drawings

Dimensional drawing



Dimensional drawing

1411135

<https://www.phoenixcontact.com/us/products/1411135>

## Approvals

🔗 To download certificates, visit the product detail page: <https://www.phoenixcontact.com/us/products/1411135>

### DNV

Approval ID: TAE000037S



### EAC

Approval ID: RU C-DE.AI30.B.01102



### EAC

Approval ID: RU C-DE.BL08.B.00511



1411135

<https://www.phoenixcontact.com/us/products/1411135>

Classifications

ECLASS

|             |          |
|-------------|----------|
| ECLASS-11.0 | 27440202 |
| ECLASS-12.0 | 27440202 |
| ECLASS-13.0 | 27440202 |

ETIM

|          |          |
|----------|----------|
| ETIM 9.0 | EC000437 |
|----------|----------|

UNSPSC

|             |          |
|-------------|----------|
| UNSPSC 21.0 | 31261500 |
|-------------|----------|

Environmental product compliance

|   |  |
|---|--|
| EU RoHS                                 |  |
| Fulfills EU RoHS substance requirements | Yes, No exemptions                       |
| China RoHS                              |  |
| Environment friendly use period (EFUP)  | EFUP-E                                   |
|   | No hazardous substances above the limits |
| EU REACH SVHC                           |  |
| REACH candidate substance (CAS No.)     | No substance above 0.1 wt%               |

# HC-HPR-B06-SHFH-2SSM25-EMR-BK - Housing



1411135

<https://www.phoenixcontact.com/us/products/1411135>

## Accessories

### G-INS-M25-M68N-PNES-GY - Cable gland

1411126

<https://www.phoenixcontact.com/us/products/1411126>



Cable gland, material for screw connection: PA, application: Standard, external cable diameter 11 mm ... 17 mm, shielding: no, connecting thread: M25 x 1.5, color: silver-grey RAL 7001

---

### G-INS-M25-M68N-PNES-BK - Cable gland

1411134

<https://www.phoenixcontact.com/us/products/1411134>



Cable gland, material for screw connection: PA, application: Standard, external cable diameter 11 mm ... 17 mm, shielding: no, connecting thread: M25 x 1.5, color: jet black RAL 9005



# HC-HPR-B06-SHFH-2SSM25-EMR-BK - Housing

1411135

<https://www.phoenixcontact.com/us/products/1411135>



## G-INS-M25-M68N-NNES-S - Cable gland

1411165

<https://www.phoenixcontact.com/us/products/1411165>



Cable gland, material for screw connection: Brass, nickel-plated, application: Standard, external cable diameter 11 mm ... 17 mm, shielding: no, connecting thread: M25 x 1.5, color: silver, with O-ring

---

## HC-M-KV-M25(14-21) - Cable gland

1646007

<https://www.phoenixcontact.com/us/products/1646007>



Metal screw connection up to 5 bar, thread length: 7 mm, cable diameter: 14 - 21 mm, WAF 34, screw connection: M25

# HC-HPR-B06-SHFH-2SSM25-EMR-BK - Housing



1411135

<https://www.phoenixcontact.com/us/products/1411135>

## G-INSEC-M25-S68N-NCRS-S - Cable gland

1411190

<https://www.phoenixcontact.com/us/products/1411190>



Cable gland, material for screw connection: Brass, nickel-plated, application: EMC, external cable diameter 11 mm ... 16 mm, shielding: yes, connecting thread: M25 x 1.5, color: silver, with O-ring

---

## G-INESR-M25-M68N-NEPDS-S - Cable gland

1415193

<https://www.phoenixcontact.com/us/products/1415193>



Cable gland, material for screw connection: Brass, nickel-plated, application: Standard, external cable diameter 9 mm ... 17 mm, shielding: no, connecting thread: M25 x 1.5, color: silver, with external strain relief, with O-ring

# HC-HPR-B06-SHFH-2SSM25-EMR-BK - Housing



1411135

<https://www.phoenixcontact.com/us/products/1411135>

## HC-M-KV-T-M25 - Cable gland

1646191

<https://www.phoenixcontact.com/us/products/1646191>

Metal screw connection with cable bend protection and strain relief, thread length: 7 mm, cable sealing area: 10 - 19 mm, clamping area: 14 - 21 mm, SW 30, screw connection: M25



---

## REDUC-M-KV-M25/M20 - Reducing adapter

1647624

<https://www.phoenixcontact.com/us/products/1647624>

Reducing adapter, connecting thread: M25 x 1.5, color: silver, with O-ring



# HC-HPR-B06-SHFH-2SSM25-EMR-BK - Housing

1411135

<https://www.phoenixcontact.com/us/products/1411135>



## ENLAR-M-KV-M25/M32 - Extension adapter

1647679

<https://www.phoenixcontact.com/us/products/1647679>

Extension adapter, connecting thread: M25 x 1.5, color: silver, with O-ring



---

## HC-M-BS-M25 - Screw plug

1645859

<https://www.phoenixcontact.com/us/products/1645859>

Screw plug, material for screw connection: Brass, nickel-plated, connecting thread: M25 x 1.5, color: silver



## HC-HPR-B06-SHFH-2SSM25-EMR-BK - Housing

1411135

<https://www.phoenixcontact.com/us/products/1411135>



## HC-HPR-B06-BCLWH-E-BK - Protective cover

1418441

<https://www.phoenixcontact.com/us/products/1418441>

Protective cover B6, with screw locking, material: die-cast aluminum, protective cover material: Al, height: 32 mm, seal: no, for increased environmental and EMC requirements



---

## US-EMLP-HA (20X9) - Plastic label

0830989

<https://www.phoenixcontact.com/us/products/0830989>

Plastic label, Card, white, unlabeled, can be labeled with: BLUEMARK ID COLOR, BLUEMARK ID, THERMOMARK PRIME, THERMOMARK CARD 2.0, THERMOMARK CARD, mounting type: adhesive, lettering field size: 20 x 9 mm, Number of individual labels: 70



# HC-HPR-B06-SHFH-2SSM25-EMR-BK - Housing



1411135

<https://www.phoenixcontact.com/us/products/1411135>

## US-EMLP-HA (20X9) CUS - Plastic label

0830995

<https://www.phoenixcontact.com/us/products/0830995>

Plastic label, Card, white, labeled, can be labeled with: THERMOMARK CARD, mounting type: adhesive, lettering field size: 20 x 9 mm, Number of individual labels: 70



---

## WP-G HF IP66 M25 BK - Screw connection

3240899

<https://www.phoenixcontact.com/us/products/3240899>

Cable gland, metric thread, IP66 protection, straight



# HC-HPR-B06-SHFH-2SSM25-EMR-BK - Housing

1411135

<https://www.phoenixcontact.com/us/products/1411135>



## WP-G HF IP69K M25 BK - Screw connection

3240885

<https://www.phoenixcontact.com/us/products/3240885>

Cable gland, metric thread, IP68/69k protection, straight



---

## WP-GA HF IP66 M25 BK - Screw connection

3240927

<https://www.phoenixcontact.com/us/products/3240927>

Cable gland, metric thread, IP66 protection, angled



# HC-HPR-B06-SHFH-2SSM25-EMR-BK - Housing

1411135

<https://www.phoenixcontact.com/us/products/1411135>



## WP-GA HF IP69K M25 BK - Screw connection

3240913

<https://www.phoenixcontact.com/us/products/3240913>

Cable gland, metric thread, IP68/69k protection, angled



---

## WP-GR HF IP66 M25 BK - Screw connection

3240955

<https://www.phoenixcontact.com/us/products/3240955>

Cable gland, metric thread, IP66 protection, with strain relief





# HC-HPR-B06-SHFH-2SSM25-EMR-BK - Housing

1411135

<https://www.phoenixcontact.com/us/products/1411135>



## WP-GR HF IP69K M25 BK - Screw connection

3240941

<https://www.phoenixcontact.com/us/products/3240941>



Cable gland, metric thread, IP68/69k protection, with strain relief

---

## WP-G PP HF M25 - Screw connection

3240999

<https://www.phoenixcontact.com/us/products/3240999>



Cable gland made from PP with metric thread, IP65 protection

# HC-HPR-B06-SHFH-2SSM25-EMR-BK - Housing



1411135

<https://www.phoenixcontact.com/us/products/1411135>

## WP-GT PP HF M25 - Screw connection

3241013

<https://www.phoenixcontact.com/us/products/3241013>



Cable gland made from PP with metric thread, rotatable, IP54 protection

---

## WP-G BRASS IP40 M25 - Screw connection

3241048

<https://www.phoenixcontact.com/us/products/3241048>



Cable gland made from brass with metric thread, IP40 protection

# HC-HPR-B06-SHFH-2SSM25-EMR-BK - Housing



1411135

<https://www.phoenixcontact.com/us/products/1411135>

## WP-GT BRASS M25 - Screw connection

3241034

<https://www.phoenixcontact.com/us/products/3241034>

Cable gland made from brass with metric thread, rotatable, IP40 protection



---

## WP-G BRASS IP65 M25 - Screw connection

3241062

<https://www.phoenixcontact.com/us/products/3241062>

Cable gland made from brass with metric thread, IP65 protection



---

Phoenix Contact 2024 © - all rights reserved  
<https://www.phoenixcontact.com>

Phoenix Contact USA  
586 Fulling Mill Road  
Middletown, PA 17057, United States  
(+717) 944-1300  
[info@phoenixcon.com](mailto:info@phoenixcon.com)