

HC-HPR-B10-SHFH-2SSM25-EMR-BK - Housing



1411883

<https://www.phoenixcontact.com/us/products/1411883>

Please be informed that the data shown in this PDF document is generated from our online catalog. Please find the complete data in the user documentation. Our general terms of use for downloads are valid.



HEAVYCON B10 box mounting base, for screw locking, HPR series, with 2 x M25 gland, for increased environmental and EMC requirements

Your advantages

- Vibration and shock: IEC 61373/EN 50155, category 1, class 1B

Commercial data

Item number	1411883
Packing unit	1 pc
Minimum order quantity	1 pc
Sales key	BF60
Product key	BF7AAI
Catalog page	Page 627 (C-4-2015)
GTIN	4046356944519
Weight per piece (including packing)	861 g
Weight per piece (excluding packing)	845 g
Customs tariff number	85389099
Country of origin	CN

HC-HPR-B10-SHFH-2SSM25-EMR-BK - Housing



1411883
<https://www.phoenixcontact.com/us/products/1411883>

Technical data

Notes

General	For contact inserts HC-B10, BB18, DD42, M, K8/24
---------	--

Product properties

Product type	Housing with screw locking
Housing type	Box mounting bases
Product family	HC-HPR-B
Series	HPR-B10
Application	Railway applications
Type	B10
No. of cable outlets	2
Type of the screw connection	2x M25
Type	Tall design
Protective cover	no
Cable outlet	lateral
Pg screw connection	none

Connection data

Tightening torque	10 Nm ... 15 Nm (for M8 mounting screws on the surface-mount housing)
-------------------	---

Dimensions

Dimensional drawing	
Width	80 mm
Height	100 mm
Length	170 mm
Drill hole distance, horizontal	140 mm
Drill hole distance, vertical	60 mm
Hole diameter	8.5 mm

Material specifications

Seal material	NBR
Housing material	die-cast aluminum
Housing surface material	Powder-coated, black

Environmental and real-life conditions

Ambient conditions

HC-HPR-B10-SHFH-2SSM25-EMR-BK - Housing



1411883

<https://www.phoenixcontact.com/us/products/1411883>

Degree of protection	IP66
	IP68 (0.5 bar / 24 h)
	IP69 (ISO 20653:2013-02)
Impact strength	IK09
Ambient temperature (operation)	-40 °C ... 125 °C

Mechanical properties

Mechanical data	
Type of the screw connection	2x M25
Locking type	Nut

HC-HPR-B10-SHFH-2SSM25-EMR-BK - Housing

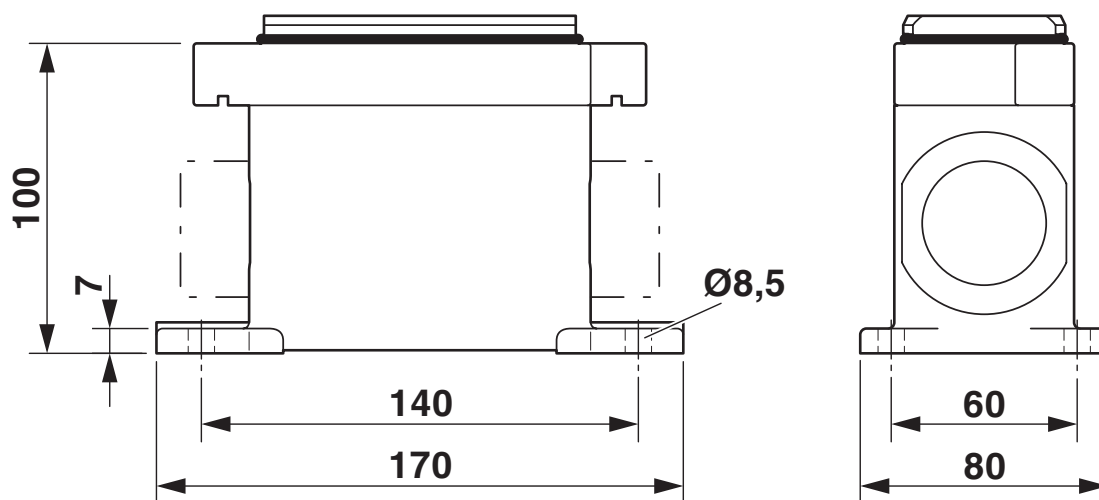
1411883

<https://www.phoenixcontact.com/us/products/1411883>



Drawings

Dimensional drawing




Dimensional drawing

1411883


<https://www.phoenixcontact.com/us/products/1411883>

Approvals


 To download certificates, visit the product detail page: <https://www.phoenixcontact.com/us/products/1411883>



Approval ID: TAE000037S



Approval ID: RU C-DE.AI30.B.01102



Approval ID: RU C-DE.BL08.B.00511

Classifications

ECLASS

ECLASS-11.0	27440202
ECLASS-12.0	27440202
ECLASS-13.0	27440202

ETIM

ETIM 9.0	EC000437
----------	----------

UNSPSC

UNSPSC 21.0	31261500
-------------	----------

Environmental product compliance

EU RoHS	
Fulfills EU RoHS substance requirements	Yes, No exemptions
China RoHS	
Environment friendly use period (EFUP)	EFUP-E
	No hazardous substances above the limits
EU REACH SVHC	
REACH candidate substance (CAS No.)	No substance above 0.1 wt%

HC-HPR-B10-SHFH-2SSM25-EMR-BK - Housing



1411883

<https://www.phoenixcontact.com/us/products/1411883>

Accessories

G-INS-M25-M68N-PNES-GY - Cable gland

1411126

<https://www.phoenixcontact.com/us/products/1411126>



Cable gland, material for screw connection: PA, application: Standard, external cable diameter 11 mm ... 17 mm, shielding: no, connecting thread: M25 x 1.5, color: silver-grey RAL 7001

G-INS-M25-M68N-PNES-BK - Cable gland

1411134

<https://www.phoenixcontact.com/us/products/1411134>



Cable gland, material for screw connection: PA, application: Standard, external cable diameter 11 mm ... 17 mm, shielding: no, connecting thread: M25 x 1.5, color: jet black RAL 9005

HC-HPR-B10-SHFH-2SSM25-EMR-BK - Housing

1411883

<https://www.phoenixcontact.com/us/products/1411883>



G-INS-M25-M68N-NNES-S - Cable gland

1411165

<https://www.phoenixcontact.com/us/products/1411165>



Cable gland, material for screw connection: Brass, nickel-plated, application: Standard, external cable diameter 11 mm ... 17 mm, shielding: no, connecting thread: M25 x 1.5, color: silver, with O-ring

HC-M-KV-M25(14-21) - Cable gland

1646007

<https://www.phoenixcontact.com/us/products/1646007>



Metal screw connection up to 5 bar, thread length: 7 mm, cable diameter: 14 - 21 mm, WAF 34, screw connection: M25

HC-HPR-B10-SHFH-2SSM25-EMR-BK - Housing



1411883

<https://www.phoenixcontact.com/us/products/1411883>

G-INSEC-M25-S68N-NCRS-S - Cable gland

1411190

<https://www.phoenixcontact.com/us/products/1411190>



Cable gland, material for screw connection: Brass, nickel-plated, application: EMC, external cable diameter 11 mm ... 16 mm, shielding: yes, connecting thread: M25 x 1.5, color: silver, with O-ring

G-INESR-M25-M68N-NEPDS-S - Cable gland

1415193

<https://www.phoenixcontact.com/us/products/1415193>



Cable gland, material for screw connection: Brass, nickel-plated, application: Standard, external cable diameter 9 mm ... 17 mm, shielding: no, connecting thread: M25 x 1.5, color: silver, with external strain relief, with O-ring

HC-HPR-B10-SHFH-2SSM25-EMR-BK - Housing

1411883

<https://www.phoenixcontact.com/us/products/1411883>



HC-M-KV-T-M25 - Cable gland

1646191

<https://www.phoenixcontact.com/us/products/1646191>

Metal screw connection with cable bend protection and strain relief, thread length: 7 mm, cable sealing area: 10 - 19 mm, clamping area: 14 - 21 mm, SW 30, screw connection: M25



REDUC-M-KV-M25/M20 - Reducing adapter

1647624

<https://www.phoenixcontact.com/us/products/1647624>

Reducing adapter, connecting thread: M25 x 1.5, color: silver, with O-ring



HC-HPR-B10-SHFH-2SSM25-EMR-BK - Housing

1411883

<https://www.phoenixcontact.com/us/products/1411883>



ENLAR-M-KV-M25/M32 - Extension adapter

1647679

<https://www.phoenixcontact.com/us/products/1647679>

Extension adapter, connecting thread: M25 x 1.5, color: silver, with O-ring



HC-M-BS-M25 - Screw plug

1645859

<https://www.phoenixcontact.com/us/products/1645859>

Screw plug, material for screw connection: Brass, nickel-plated, connecting thread: M25 x 1.5, color: silver



HC-HPR-B10-SHFH-2SSM25-EMR-BK - Housing

1411883

<https://www.phoenixcontact.com/us/products/1411883>



HC-HPR-B10-BCLWH-E-BK - Protective cover

1418444

<https://www.phoenixcontact.com/us/products/1418444>



Protective cover B10, with screw locking, material: die-cast aluminum, protective cover material: Al, height: 32 mm, seal: no, for increased environmental and EMC requirements

US-EMLP-HA (20X9) - Plastic label

0830989

<https://www.phoenixcontact.com/us/products/0830989>



Plastic label, Card, white, unlabeled, can be labeled with: BLUEMARK ID COLOR, BLUEMARK ID, THERMOMARK PRIME, THERMOMARK CARD 2.0, THERMOMARK CARD, mounting type: adhesive, lettering field size: 20 x 9 mm, Number of individual labels: 70

HC-HPR-B10-SHFH-2SSM25-EMR-BK - Housing



1411883

<https://www.phoenixcontact.com/us/products/1411883>

US-EMLP-HA (20X9) CUS - Plastic label

0830995

<https://www.phoenixcontact.com/us/products/0830995>

Plastic label, Card, white, labeled, can be labeled with: THERMOMARK CARD, mounting type: adhesive, lettering field size: 20 x 9 mm, Number of individual labels: 70



WP-G HF IP66 M25 BK - Screw connection

3240899

<https://www.phoenixcontact.com/us/products/3240899>

Cable gland, metric thread, IP66 protection, straight



HC-HPR-B10-SHFH-2SSM25-EMR-BK - Housing

1411883

<https://www.phoenixcontact.com/us/products/1411883>



WP-G HF IP69K M25 BK - Screw connection

3240885

<https://www.phoenixcontact.com/us/products/3240885>

Cable gland, metric thread, IP68/69k protection, straight



WP-GA HF IP66 M25 BK - Screw connection

3240927

<https://www.phoenixcontact.com/us/products/3240927>

Cable gland, metric thread, IP66 protection, angled



HC-HPR-B10-SHFH-2SSM25-EMR-BK - Housing

1411883

<https://www.phoenixcontact.com/us/products/1411883>



WP-GA HF IP69K M25 BK - Screw connection

3240913

<https://www.phoenixcontact.com/us/products/3240913>

Cable gland, metric thread, IP68/69k protection, angled



WP-GR HF IP66 M25 BK - Screw connection

3240955

<https://www.phoenixcontact.com/us/products/3240955>

Cable gland, metric thread, IP66 protection, with strain relief



HC-HPR-B10-SHFH-2SSM25-EMR-BK - Housing

1411883

<https://www.phoenixcontact.com/us/products/1411883>



WP-GR HF IP69K M25 BK - Screw connection

3240941

<https://www.phoenixcontact.com/us/products/3240941>



Cable gland, metric thread, IP68/69k protection, with strain relief

WP-G PP HF M25 - Screw connection

3240999

<https://www.phoenixcontact.com/us/products/3240999>



Cable gland made from PP with metric thread, IP65 protection

HC-HPR-B10-SHFH-2SSM25-EMR-BK - Housing



1411883

<https://www.phoenixcontact.com/us/products/1411883>

WP-GT PP HF M25 - Screw connection

3241013

<https://www.phoenixcontact.com/us/products/3241013>



Cable gland made from PP with metric thread, rotatable, IP54 protection

WP-G BRASS IP40 M25 - Screw connection

3241048

<https://www.phoenixcontact.com/us/products/3241048>



Cable gland made from brass with metric thread, IP40 protection

HC-HPR-B10-SHFH-2SSM25-EMR-BK - Housing



1411883

<https://www.phoenixcontact.com/us/products/1411883>

WP-GT BRASS M25 - Screw connection

3241034

<https://www.phoenixcontact.com/us/products/3241034>

Cable gland made from brass with metric thread, rotatable, IP40 protection



WP-G BRASS IP65 M25 - Screw connection

3241062

<https://www.phoenixcontact.com/us/products/3241062>

Cable gland made from brass with metric thread, IP65 protection



Phoenix Contact 2024 © - all rights reserved
<https://www.phoenixcontact.com>

Phoenix Contact USA
586 Fulling Mill Road
Middletown, PA 17057, United States
(+717) 944-1300
info@phoenixcon.com