

# QPD W 2PE1,5 M20 FC BK - Panel feed-through



1414692

<https://www.phoenixcontact.com/us/products/1414692>

Please be informed that the data shown in this PDF document is generated from our online catalog. Please find the complete data in the user documentation. Our general terms of use for downloads are valid.



Panel feed-through, product family: QPD, connection method: Spade connection (For slip-on sleeves according to DIN 46247-2), number of positions: 2+PE, M20, 0.5 mm<sup>2</sup> ... 1.5 mm<sup>2</sup>, 690 V, 15 A, PA, black, without QUICKON nut, coding: Coding profile, 1.5 mm<sup>2</sup>

## Your advantages

- Innovative and time saving - QUICKON fast connection for time saving of up to 80 % for on-site connection
- Robust throughout: housing with IP68/IP69K and IK07 protection for a wide range of applications
- Safer connection with mechanical coding to protect against mismatching, and touch-proof protection in accordance with DIN EN 0105
- Efficient - by using panel feed-throughs, devices no longer need to be opened in order to connect cables

## Commercial data

Item number	1414692
Packing unit	1 pc
Minimum order quantity	1 pc
Sales key	BF50
Product key	BF6AAA
Catalog page	Page 478 (C-2-2019)
GTIN	4055626031453
Weight per piece (including packing)	20.3 g
Weight per piece (excluding packing)	19 g
Customs tariff number	85366990
Country of origin	PL

# QPD W 2PE1,5 M20 FC BK - Panel feed-through



1414692

<https://www.phoenixcontact.com/us/products/1414692>

## Technical data

### Product properties

Product type	Panel feed-through
Product family	QPD
Type	QPD 3x1,5
Number of positions	3
Connection profile	2+PE
Position marking	1, 2, PE
Number of connections	10
Number of connections per position	1
Coding	Coding profile

### Insulation characteristics

Overvoltage category	III
Degree of pollution	3

### Connection data

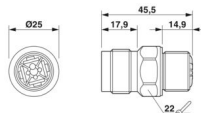
#### Connection technology

Connection method On the device side	Spade connection (For slip-on sleeves according to DIN 46247-2)
Frequency of connections between conductors of the same cross section	max. 10

#### Conductor connection

Conductor cross section flexibel	0.5 mm <sup>2</sup> ... 1.5 mm <sup>2</sup>
Conductor cross section solid	0.5 mm <sup>2</sup> ... 1.5 mm <sup>2</sup>
Connection cross section AWG	20 ... 16
Tightening torque Union nut	8 Nm
Tightening torque Locking nut	5 Nm

### Dimensions

Dimensional drawing	
Width	25 mm
Height	25 mm
Length	45.5 mm
Diameter	25 mm
Dimensions of slip-on connection	4.8 x 0.8 mm

### Electrical properties

Rated surge voltage (II/2)	8 kV
----------------------------	------

# QPD W 2PE1,5 M20 FC BK - Panel feed-through



1414692

<https://www.phoenixcontact.com/us/products/1414692>

Rated surge voltage (III/2)	8 kV
Rated surge voltage (III/3)	6 kV
Rated current	15 A
Contact resistance	< 3 mΩ
rated voltage (II/2)	1000 V
rated voltage (III/2)	1000 V
Rated voltage (III/3)	690 V
Nominal voltage $U_N$	690 V AC
	690 V DC
Nominal current $I_N$	15 A

## Mechanical properties

### Mechanical data

Insertion/withdrawal cycles	max. 50
-----------------------------	---------

## Material specifications

Color	black (RAL 9005)
Material Housing	PA
Material Contact	Cu
Material Contact surface	Silver-plated
Flammability rating according to UL 94	V0
Material wire insulation	PVC/PE/TPE/rubber

## Cable/line

Structure of individual litz in acc. with VDE 0295 / smallest wire diameter	VDE 0295 class 1 to 6/min. 0.15 mm
Wire diameter including insulation	1.6 mm ... 3 mm
Position marking	1, 2, PE
Cable cross section	1.5 mm <sup>2</sup>
Material wire insulation	PVC/PE/TPE/rubber

## Mounting

Mounting type	Front mounting M20
---------------	--------------------

## Environmental and real-life conditions

### Ambient conditions

Degree of protection	IP66
	IP68 (2 m / 24 h)
	IP69K
Ambient temperature (operation)	-40 °C ... 100 °C
Temperature when conductor connected	-5 °C ... 50 °C
Ambient temperature (storage/transport)	-40 °C ... 100 °C

QPD W 2PE1,5 M20 FC BK - Panel feed-through

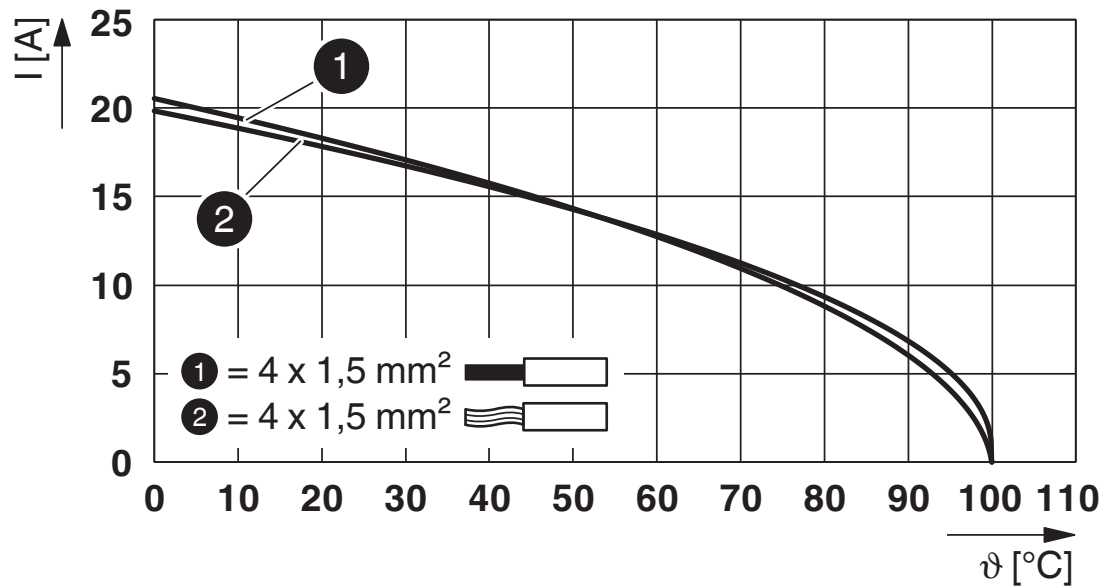


1414692

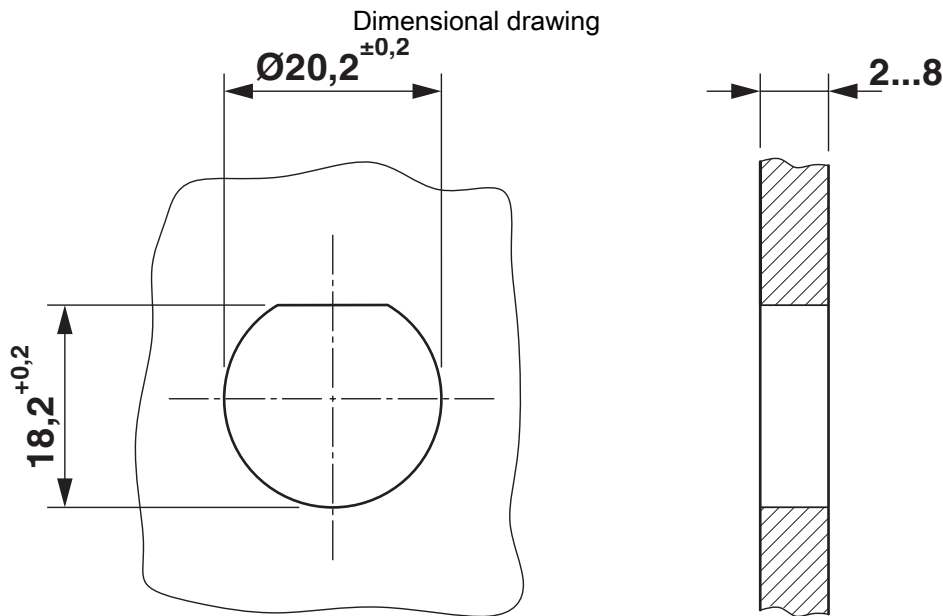
<https://www.phoenixcontact.com/us/products/1414692>

Drawings

Diagram



Derating diagram



Housing cutout

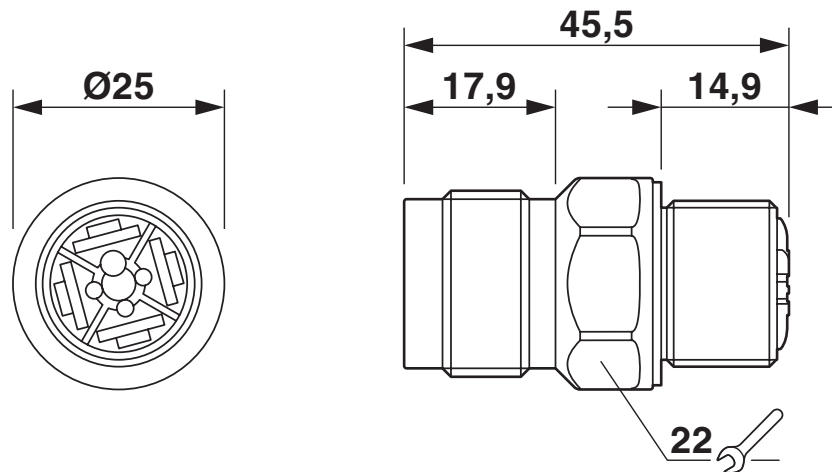
# QPD W 2PE1,5 M20 FC BK - Panel feed-through



1414692

<https://www.phoenixcontact.com/us/products/1414692>

Dimensional drawing



# QPD W 2PE1,5 M20 FC BK - Panel feed-through




1414692


<https://www.phoenixcontact.com/us/products/1414692>

## Approvals

To download certificates, visit the product detail page: <https://www.phoenixcontact.com/us/products/1414692>




**IECEE CB Scheme**  
Approval ID: DE1-65875



**EAC**  
Approval ID: RU C-DE.BL08.B.00511




**DNV GL**  
Approval ID: TAE00003J5



**VDE Zeichengenehmigung**  
Approval ID: 40029149

	<b>UL Listed</b> Approval ID: E468743			
	Nominal voltage $U_N$	Nominal current $I_N$	Cross section AWG	Cross section $\text{mm}^2$
	600 V	8 A	-	- 16

	<b>cUL Listed</b> Approval ID: E468743			
	Nominal voltage $U_N$	Nominal current $I_N$	Cross section AWG	Cross section $\text{mm}^2$
	600 V	8 A	- 16	-

**cULus Listed**

# QPD W 2PE1,5 M20 FC BK - Panel feed-through



1414692

<https://www.phoenixcontact.com/us/products/1414692>

## Classifications

### ECLASS

ECLASS-11.0	27440602
ECLASS-12.0	27440602
ECLASS-13.0	27440602

### ETIM

ETIM 9.0	EC002566
----------	----------

### UNSPSC

UNSPSC 21.0	39121500
-------------	----------

Environmental product compliance

EU RoHS	
Fulfills EU RoHS substance requirements	Yes, No exemptions
China RoHS	
Environment friendly use period (EFUP)	EFUP-E
	No hazardous substances above the limits
EU REACH SVHC	
REACH candidate substance (CAS No.)	No substance above 0.1 wt%



# QPD W 2PE1,5 M20 FC BK - Panel feed-through



1414692

<https://www.phoenixcontact.com/us/products/1414692>

## Mandatory accessories

### QPD P 2PE1,5 4-9 BK - Connector

1414705

<https://www.phoenixcontact.com/us/products/1414705>



Connector, product family: QPD, connection method: IDC connection, number of positions: 2+PE, 0.5 mm<sup>2</sup> ... 1.5 mm<sup>2</sup>, 690 V, 17.5 A, PA, black, with QUICKON nut, coding: Coding profile, external cable diameter: 5 mm ... 7 mm and 7 mm ... 9.5 mm

---

### QPD P 2PE1,5 8-13 BK - Connector

1414706

<https://www.phoenixcontact.com/us/products/1414706>



Connector, product family: QPD, connection method: IDC connection, number of positions: 2+PE, 0.5 mm<sup>2</sup> ... 1.5 mm<sup>2</sup>, 690 V, 17.5 A, PA, black, with QUICKON nut, coding: Coding profile, external cable diameter: 10 mm ... 13 mm

# QPD W 2PE1,5 M20 FC BK - Panel feed-through



1414692

<https://www.phoenixcontact.com/us/products/1414692>

## QPD N 2PE1,5 4-9 BK - Nut

1415099

<https://www.phoenixcontact.com/us/products/1415099>



Nut, product family: QPD, connection method: IDC connection, number of positions: 2+PE, 0.5 mm<sup>2</sup> ... 1.5 mm<sup>2</sup>, 690 V, 17.5 A, PA, black, external cable diameter: 5 mm ... 7 mm and 7 mm ... 9.5 mm

---

## QPD N 2PE1,5 8-13 BK - Nut

1415100

<https://www.phoenixcontact.com/us/products/1415100>



Nut, product family: QPD, connection method: IDC connection, number of positions: 2+PE, 0.5 mm<sup>2</sup> ... 1.5 mm<sup>2</sup>, 690 V, 17.5 A, PA, black, external cable diameter: 10 mm ... 13 mm

---

## Accessories

## QPD W 2PE1,5 M20 FC BK - Panel feed-through

1414692

<https://www.phoenixcontact.com/us/products/1414692>



### QPD QSK 3/4X1,5 - Protective cap

1414723

<https://www.phoenixcontact.com/us/products/1414723>

Protective cap plastic, for QPD-QUICKON connection 3(4) x 1.5 mm<sup>2</sup>, IP50



---

### QPD QSK BK 3/4X1,5 FS - Protective cap

1414722

<https://www.phoenixcontact.com/us/products/1414722>

Protective cap, plastic, for QUICKON connection, black, with retaining cord, IP68



## QPD W 2PE1,5 M20 FC BK - Panel feed-through

1414692

<https://www.phoenixcontact.com/us/products/1414692>



### CP-QPD 3/4X1,5 - Coding profile

1414729

<https://www.phoenixcontact.com/us/products/1414729>



Coding profile red, for pushing into the QUICKON dome and connector, can be positioned in 90° steps.

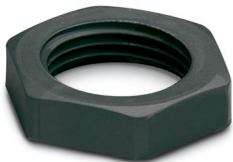
---

### Q-MU-M20 BK - Flat nut

1586099

<https://www.phoenixcontact.com/us/products/1586099>

Flat nut, color: black



## QPD W 2PE1,5 M20 FC BK - Panel feed-through

1414692

<https://www.phoenixcontact.com/us/products/1414692>



### QPD W 2PE1,5 M20 0,5 BK - Panel feed-through

1414690

<https://www.phoenixcontact.com/us/products/1414690>



Panel feed-through, product family: QPD, connection method: Single wires (Welded-on), number of positions: 2+PE, M20, 0.5 mm<sup>2</sup> ... 1.5 mm<sup>2</sup>, 690 V, 17.5 A, PA, black, without QUICKON nut, coding: Coding profile, 1.5 mm<sup>2</sup>, wires cut flat at the end, cable length: 0.5 m

---

### QPD W 2PE1,5 M20 1,0 BK - Panel feed-through

1414691

<https://www.phoenixcontact.com/us/products/1414691>



Panel feed-through, product family: QPD, connection method: Single wires, number of positions: 2+PE, M20, 0.5 mm<sup>2</sup> ... 1.5 mm<sup>2</sup>, 690 V, 17.5 A, PA, black, without QUICKON nut, coding: Coding profile, 1.5 mm<sup>2</sup>, cable length: 1 m

# QPD W 2PE1,5 M20 FC BK - Panel feed-through



1414692

<https://www.phoenixcontact.com/us/products/1414692>

## QPD H 2PE1,5 BK - H distributor

1414721

<https://www.phoenixcontact.com/us/products/1414721>



H distributor, product family: QPD, connection method: IDC connection/  
QUICKON fast connection, number of positions: 2+PE, 0.5 mm<sup>2</sup> ... 1.5 mm<sup>2</sup>, 690  
V, 17.5 A, PA, black, without QUICKON nut, coding: Coding profile

---

## QPD C 2PE1,5 1X4-9 BK - Conductor connector

1414699

<https://www.phoenixcontact.com/us/products/1414699>



Conductor connector, product family: QPD, connection method: IDC connection,  
number of positions: 2+PE, 0.5 mm<sup>2</sup> ... 1.5 mm<sup>2</sup>, 690 V, 17.5 A, PA, black, with  
one QUICKON nut, coding: Coding profile, external cable diameter: 5 mm ... 7  
mm and 7 mm ... 9.5 mm

## QPD W 2PE1,5 M20 FC BK - Panel feed-through

1414692

<https://www.phoenixcontact.com/us/products/1414692>



## QPD C 2PE1,5 1X8-13 BK - Conductor connector

1414701

<https://www.phoenixcontact.com/us/products/1414701>



Conductor connector, product family: QPD, connection method: IDC connection, number of positions: 2+PE, 0.5 mm<sup>2</sup> ... 1.5 mm<sup>2</sup>, 690 V, 17.5 A, PA, black, with one QUICKON nut, coding: Coding profile, external cable diameter: 10 mm ... 13 mm

## QPD T 2PE1,5 2X4-9 BK - T distributor

1414711

<https://www.phoenixcontact.com/us/products/1414711>



T distributor, product family: QPD, connection method: IDC connection, number of positions: 2+PE, 0.5 mm<sup>2</sup> ... 1.5 mm<sup>2</sup>, 690 V, 17.5 A, PA, black, With two QUICKON nuts, coding: Coding profile, external cable diameter: 5 mm ... 7 mm and 7 mm ... 9.5 mm

## QPD W 2PE1,5 M20 FC BK - Panel feed-through

1414692

<https://www.phoenixcontact.com/us/products/1414692>



## QPD T 2PE1,5 2X8-13 BK - T distributor

1414713

<https://www.phoenixcontact.com/us/products/1414713>



T distributor, product family: QPD, connection method: IDC connection, number of positions: 2+PE, 0.5 mm<sup>2</sup> ... 1.5 mm<sup>2</sup>, 690 V, 17.5 A, PA, black, With two QUICKON nuts, coding: Coding profile, external cable diameter: 10 mm ... 13 mm

---

## QSS 22 - Socket wrench

1670206

<https://www.phoenixcontact.com/us/products/1670206>



Allen wrench, for loosening and fastening the QUICKON union nut, WAF 22 mm

---

Phoenix Contact 2024 © - all rights reserved  
<https://www.phoenixcontact.com>

Phoenix Contact USA  
586 Fulling Mill Road  
Middletown, PA 17057, United States  
(+717) 944-1300  
[info@phoenixcon.com](mailto:info@phoenixcon.com)