

HC-STA-D07-SHCWS-1SGM20-PL-BK - Housing



1419268

<https://www.phoenixcontact.com/us/products/1419268>

Please be informed that the data shown in this PDF document is generated from our online catalog. Please find the complete data in the user documentation. Our general terms of use for downloads are valid.

Box mounting bases D7, with single locking latch, material: PA, cable outlets: 1, straight, M20, height: 28 mm, cable gland: with, Standard, enclosed bottom



Commercial data

Item number	1419268
Packing unit	1 pc
Minimum order quantity	1 pc
Sales key	BF56
Product key	BF7APD
Catalog page	Page 516 (C-2-2019)
GTIN	4055626160191
Weight per piece (including packing)	31.9 g
Weight per piece (excluding packing)	31.7 g
Customs tariff number	85389099
Country of origin	CN

HC-STA-D07-SHCWS-1SGM20-PL-BK - Housing



1419268
<https://www.phoenixcontact.com/us/products/1419268>

Technical data

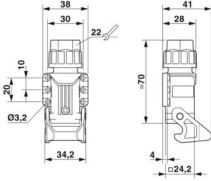
Notes

General	for contact inserts HC-A03, A04, D07, D08, Q02, Q03, Q04, Q05, Q07, Q12
---------	---

Product properties

Product type	Housing with locking latch
Housing type	Box mounting bases
Product family	HC-STA-D07
Application	Standard
Type	D7
No. of cable outlets	1
Type of the screw connection	M20
Shielded	no
Cable outlet	straight
Pg screw connection	with

Dimensions

Dimensional drawing	
Width	38 mm
Height	28 mm
Length	24.2 mm
Hole diameter	3.2 mm

Material specifications

Flammability rating according to UL 94	V0 (Housing)
	V0 (Interlock)
Seal material	NBR
Housing material	PA
Locking latch material	PA

Mechanical properties

Mechanical data	
Type of the screw connection	M20
Locking type	Latch

Cable/line

HC-STA-D07-SHCWS-1SGM20-PL-BK - Housing



1419268

<https://www.phoenixcontact.com/us/products/1419268>

External cable diameter	4 mm ... 10 mm
-------------------------	----------------

Connection data

External cable diameter	4 mm ... 10 mm
Tightening torque	0.5 Nm ... 0.8 Nm (for M3 mounting screws on the surface-mount housing)

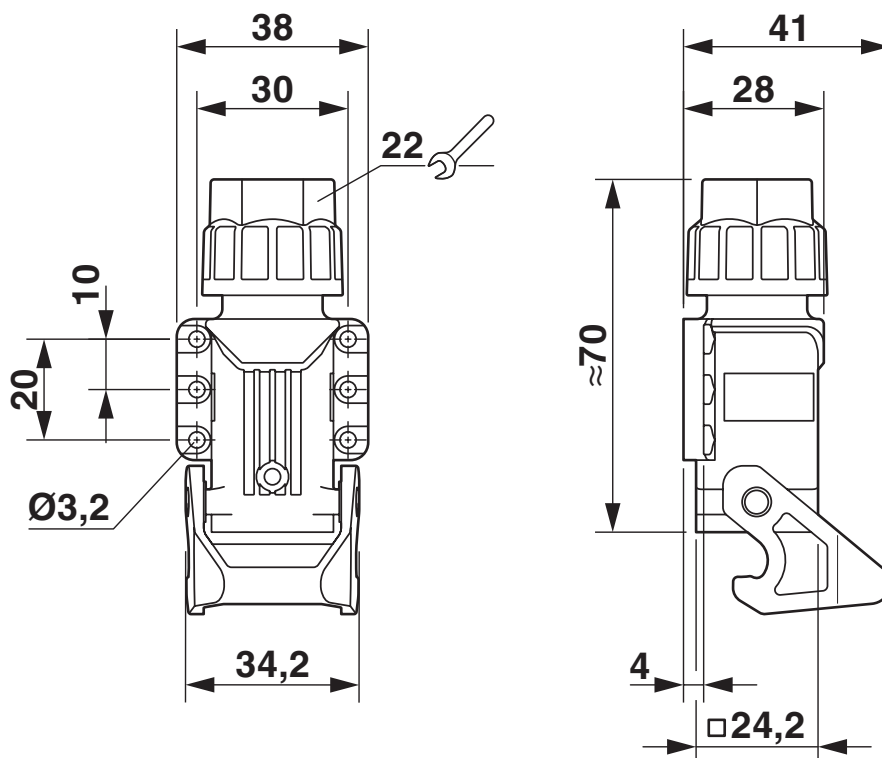
Environmental and real-life conditions

Ambient conditions

Degree of protection	IP66
Impact strength	IK06
Ambient temperature (operation)	-40 °C ... 125 °C

Drawings

Dimensional drawing



Dimensional drawing

HC-STA-D07-SHCWS-1SGM20-PL-BK - Housing



1419268

<https://www.phoenixcontact.com/us/products/1419268>

Approvals

🔗 To download certificates, visit the product detail page: <https://www.phoenixcontact.com/us/products/1419268>

DNV

Approval ID: TAE000037S



EAC

Approval ID: RU C-DE.BL08.B.00511



1419268

<https://www.phoenixcontact.com/us/products/1419268>

Classifications

ECLASS

ECLASS-11.0	27440202
ECLASS-12.0	27440202
ECLASS-13.0	27440202

ETIM

ETIM 9.0	EC000437
----------	----------

UNSPSC

UNSPSC 21.0	31261500
-------------	----------

Environmental product compliance

EU RoHS	
Fulfills EU RoHS substance requirements	Yes, No exemptions
China RoHS	
Environment friendly use period (EFUP)	EFUP-E
	No hazardous substances above the limits
EU REACH SVHC	
REACH candidate substance (CAS No.)	No substance above 0.1 wt%

HC-STA-D07-SHCWS-1SGM20-PL-BK - Housing



1419268

<https://www.phoenixcontact.com/us/products/1419268>

Accessories

US-EMLP (11X9) CUS - Plastic label

0830073

<https://www.phoenixcontact.com/us/products/0830073>

Plastic label, can be ordered: by card, white, labeled according to customer specifications, mounting type: adhesive, lettering field size: 11 x 9 mm, Number of individual labels: 135



HC-D07-SL-PLBK - Housing brackets

1424440

<https://www.phoenixcontact.com/us/products/1424440>

Replacement latch for HC-D7 housing



HC-STA-D07-SHCWS-1SGM20-PL-BK - Housing



1419268

<https://www.phoenixcontact.com/us/products/1419268>

HC-STA-D07-BCLFS-PLR-BK - Protective cover

1419270

<https://www.phoenixcontact.com/us/products/1419270>

Protective cover D7, for single locking latch, material: PA, protective cover material: PA, height: 29.4 mm, seal: yes, Standard, with lanyard, for socket inserts



HC-STA-D07-BCLFS-PL-BK - Protective cover

1419271

<https://www.phoenixcontact.com/us/products/1419271>

Protective cover D7, for single locking latch, material: PA, protective cover material: PA, height: 29.4 mm, seal: no, Standard, with lanyard, for pin inserts



HC-STA-D07-SHCWS-1SGM20-PL-BK - Housing



1419268

<https://www.phoenixcontact.com/us/products/1419268>

HC-STA-D07-BCSFS-PLR-BK - Protective cover

1419272

<https://www.phoenixcontact.com/us/products/1419272>



Protective cover D7, for single locking latch, material: PA, protective cover material: PA, height: 30 mm, seal: yes, Standard, with lanyard, for socket inserts

HC-STA-D07-BCSFS-PL-BK - Protective cover

1419273

<https://www.phoenixcontact.com/us/products/1419273>



Protective cover D7, for single locking latch, material: PA, protective cover material: PA, height: 30 mm, seal: no, Standard, with lanyard, for pin inserts

Phoenix Contact 2024 © - all rights reserved
<https://www.phoenixcontact.com>

Phoenix Contact USA
586 Fulling Mill Road
Middletown, PA 17057, United States
(+717) 944-1300
info@phoenixcon.com