

HC-B 6-TFL-N-O1M20G - Housing



1460319

<https://www.phoenixcontact.com/us/products/1460319>

Please be informed that the data shown in this PDF document is generated from our online catalog. Please find the complete data in the user documentation. Our general terms of use for downloads are valid.



HEAVYCON B6 sleeve housing, for single locking latch, height: 56 mm, with 1 x M20 gland, straight cable outlet

Commercial data

| | |
|--------------------------------------|--------------------------------|
| Item number | 1460319 |
| Packing unit | 1 pc |
| Note | Made to order (non-returnable) |
| Sales key | BF55 |
| Product key | BF7AAC |
| GTIN | 4046356794732 |
| Weight per piece (including packing) | 143.26 g |
| Weight per piece (excluding packing) | 138 g |
| Customs tariff number | 85389099 |
| Country of origin | DE |

HC-B 6-TFL-N-O1M20G - Housing

1460319

<https://www.phoenixcontact.com/us/products/1460319>



Technical data

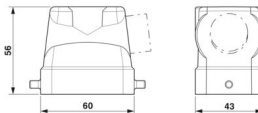
Notes

| | |
|---------|--|
| General | For contact inserts HC-B6, BB10, DD24, M |
|---------|--|

Product properties

| | |
|------------------------------|----------------------------|
| Product type | Housing with locking latch |
| Housing type | Sleeve housing |
| Application | Standard |
| Type | B6 |
| No. of cable outlets | 1 |
| Type of the screw connection | 1x M20 |
| Cable outlet | straight |
| Pg screw connection | none |

Dimensions

| | |
|---------------------|--|
| Dimensional drawing |  |
| Width | 43 mm |
| Height | 56 mm |
| Length | 60 mm |

Material specifications

| | |
|--------------------------|---------------------|
| Housing material | die-cast aluminum |
| Housing surface material | Powder-coated, gray |

Mechanical properties

Mechanical data

| | |
|------------------------------|--------|
| Type of the screw connection | 1x M20 |
|------------------------------|--------|

Mounting

| | |
|---------------|-------------------------------------|
| Assembly note | For half and full screw connections |
|---------------|-------------------------------------|

Environmental and real-life conditions

Ambient conditions

| | |
|---------------------------------|-------------------|
| Degree of protection | IP65 |
| Ambient temperature (operation) | -40 °C ... 125 °C |

HC-B 6-TFL-N-O1M20G - Housing

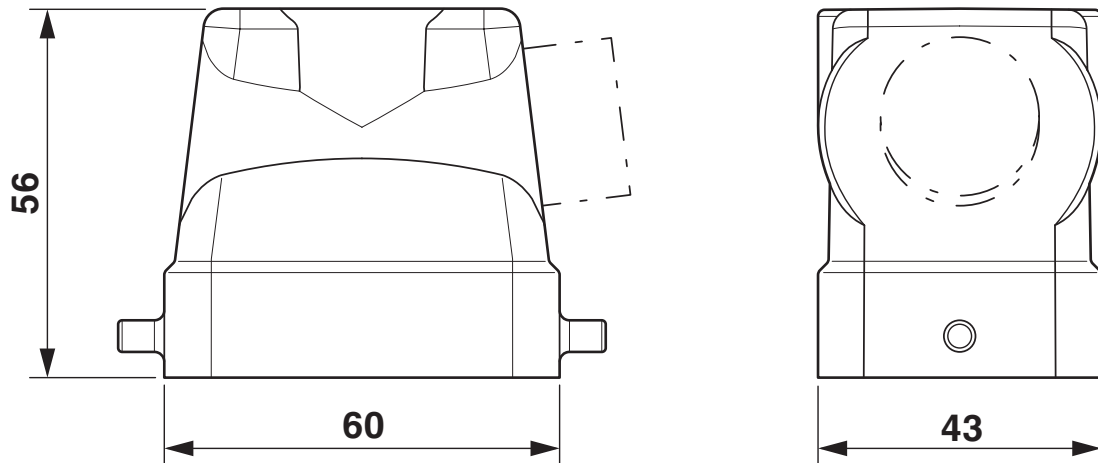
1460319

<https://www.phoenixcontact.com/us/products/1460319>



Drawings

Dimensional drawing



Dimensional drawing

HC-B 6-TFL-N-O1M20G - Housing



1460319

<https://www.phoenixcontact.com/us/products/1460319>

Classifications

ECLASS

| | |
|-------------|----------|
| ECLASS-11.0 | 27440202 |
| ECLASS-13.0 | 27440202 |

UNSPSC

| | |
|-------------|----------|
| UNSPSC 21.0 | 31261501 |
|-------------|----------|

Environmental product compliance

| | |
|--|--|
| China RoHS | |
| Environment friendly use period (EFUP) | EFUP-E |
| | No hazardous substances above the limits |
| EU REACH SVHC | |
| REACH candidate substance (CAS No.) | No substance above 0.1 wt% |

HC-B 6-TFL-N-O1M20G - Housing

1460319

<https://www.phoenixcontact.com/us/products/1460319>



Accessories

G-INS-M20-S68N-PNES-GY - Cable gland

1411125

<https://www.phoenixcontact.com/us/products/1411125>



Cable gland, material for screw connection: PA, application: Standard, external cable diameter 6 mm ... 12 mm, shielding: no, connecting thread: M20 x 1.5, color: silver-grey RAL 7001

G-INS-M20-S68N-PNES-BK - Cable gland

1411133

<https://www.phoenixcontact.com/us/products/1411133>



Cable gland, material for screw connection: PA, application: Standard, external cable diameter 6 mm ... 12 mm, shielding: no, connecting thread: M20 x 1.5, color: jet black RAL 9005

HC-B 6-TFL-N-O1M20G - Housing

1460319

<https://www.phoenixcontact.com/us/products/1460319>



G-INS-M20-S68N-NNES-S - Cable gland

1411163

<https://www.phoenixcontact.com/us/products/1411163>



Cable gland, material for screw connection: Brass, nickel-plated, application: Standard, external cable diameter 6 mm ... 12 mm, shielding: no, connecting thread: M20 x 1.5, color: silver, with O-ring

HC-M-KV-M20(11-16) - Cable gland

1645998

<https://www.phoenixcontact.com/us/products/1645998>



Metal screw connection up to 5 bar, thread length: 6 mm, cable diameter: 11 - 16 mm, WAF 27, screw connection: M20

HC-B 6-TFL-N-O1M20G - Housing

1460319

<https://www.phoenixcontact.com/us/products/1460319>



G-INSEC-M20-S68N-NCRS-S - Cable gland

1411189

<https://www.phoenixcontact.com/us/products/1411189>



Cable gland, material for screw connection: Brass, nickel-plated, application: EMC, external cable diameter 9 mm ... 13 mm, shielding: yes, connecting thread: M20 x 1.5, color: silver, with O-ring

G-INESR-M20-S68N-NEPDS-S - Cable gland

1415192

<https://www.phoenixcontact.com/us/products/1415192>



Cable gland, material for screw connection: Brass, nickel-plated, application: Standard, external cable diameter 6 mm ... 13 mm, shielding: no, connecting thread: M20 x 1.5, color: silver, with external strain relief, with O-ring

HC-B 6-TFL-N-O1M20G - Housing

1460319

<https://www.phoenixcontact.com/us/products/1460319>



HC-M-KV-T-M20 - Cable gland

1646188

<https://www.phoenixcontact.com/us/products/1646188>

Metal screw connection with cable bend protection and strain relief, thread length: 6 mm, cable sealing area: 7.5 - 15 mm, clamping area: 10 - 16 mm, SW 24, screw connection: M20



REDUC-M-KV-M20/M16 - Reducing adapter

1647611

<https://www.phoenixcontact.com/us/products/1647611>

Reducing adapter, connecting thread: M20 x 1.5, color: silver, with O-ring



HC-B 6-TFL-N-O1M20G - Housing

1460319

<https://www.phoenixcontact.com/us/products/1460319>



ENLAR-M-KV-M20/M25 - Extension adapter

1647666

<https://www.phoenixcontact.com/us/products/1647666>

Extension adapter, connecting thread: M20 x 1.5, color: silver, with O-ring



HC-M-BS-M20 - Screw plug

1645846

<https://www.phoenixcontact.com/us/products/1645846>

Screw plug, material for screw connection: Brass, nickel-plated, connecting thread: M20 x 1.5, color: silver



Phoenix Contact 2024 © - all rights reserved
<https://www.phoenixcontact.com>

Phoenix Contact USA
586 Fulling Mill Road
Middletown, PA 17057, United States
(+717) 944-1300
info@phoenixcon.com