

HC-B 06-TFL-N-M1M20S - Housing

1460343

<https://www.phoenixcontact.com/us/products/1460343>



Please be informed that the data shown in this PDF document is generated from our online catalog. Please find the complete data in the user documentation. Our general terms of use for downloads are valid.



HEAVYCON B6 sleeve housing, for single locking latch, height: 56 mm, with 1 x M20 screw connection, lateral cable outlet

Commercial data

Item number	1460343
Packing unit	1 pc
Note	Made to order (non-returnable)
Sales key	BF55
Product key	BF7AAC
GTIN	4046356794831
Weight per piece (including packing)	147.99 g
Weight per piece (excluding packing)	147.99 g
Customs tariff number	85389099
Country of origin	DE

HC-B 06-TFL-N-M1M20S - Housing

1460343

<https://www.phoenixcontact.com/us/products/1460343>



Technical data

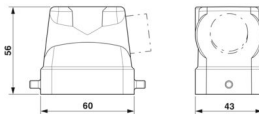
Notes

General	For contact inserts HC-B6, BB10, DD24, M
---------	--

Product properties

Product type	Housing with locking latch
Housing type	Sleeve housing
Application	Standard
Type	B6
No. of cable outlets	1
Type of the screw connection	1x M20
Cable outlet	lateral
Pg screw connection	with

Dimensions

Dimensional drawing	
Width	43 mm
Height	56 mm
Length	60 mm
Wrench size, union nut	20 mm

Material specifications

Housing material	die-cast aluminum
Housing surface material	Powder-coated, gray

Mechanical properties

Mechanical data

Type of the screw connection	1x M20
------------------------------	--------

Cable/line

External cable diameter	5 mm ... 12 mm
-------------------------	----------------

Connection data

External cable diameter	5 mm ... 12 mm
-------------------------	----------------

Environmental and real-life conditions

Ambient conditions

Degree of protection	IP65
----------------------	------

HC-B 06-TFL-N-M1M20S - Housing

1460343

<https://www.phoenixcontact.com/us/products/1460343>



Ambient temperature (operation)	-40 °C ... 125 °C
---------------------------------	-------------------

HC-B 06-TFL-N-M1M20S - Housing

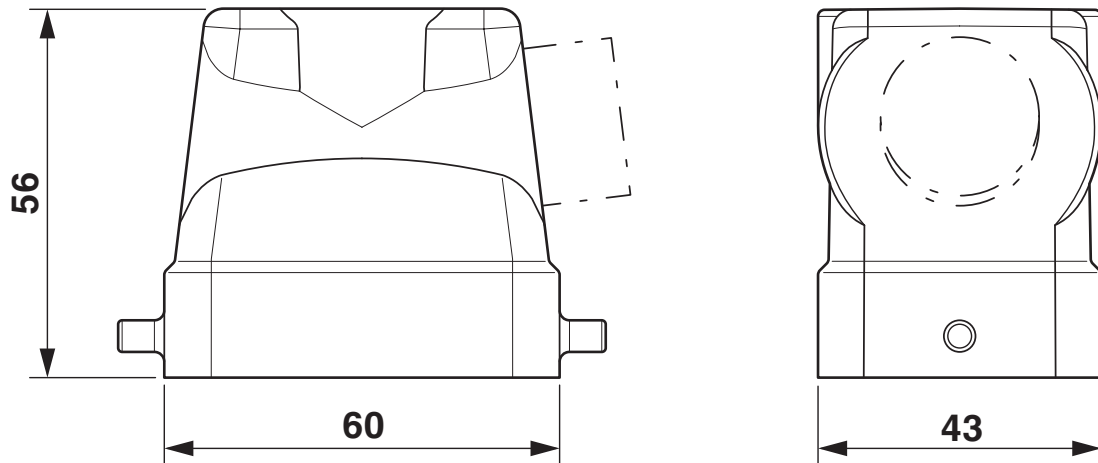
1460343

<https://www.phoenixcontact.com/us/products/1460343>



Drawings

Dimensional drawing



Dimensional drawing

HC-B 06-TFL-N-M1M20S - Housing



1460343

<https://www.phoenixcontact.com/us/products/1460343>

Classifications

ECLASS

ECLASS-11.0	27440202
ECLASS-13.0	27440202

UNSPSC

UNSPSC 21.0	31261501
-------------	----------

Environmental product compliance

China RoHS	
Environment friendly use period (EFUP)	EFUP-E
	No hazardous substances above the limits
EU REACH SVHC	
REACH candidate substance (CAS No.)	No substance above 0.1 wt%

HC-B 06-TFL-N-M1M20S - Housing

1460343

<https://www.phoenixcontact.com/us/products/1460343>



Accessories

G-INS-M20-S68N-NNES-S - Cable gland

1411163

<https://www.phoenixcontact.com/us/products/1411163>



Cable gland, material for screw connection: Brass, nickel-plated, application: Standard, external cable diameter 6 mm ... 12 mm, shielding: no, connecting thread: M20 x 1.5, color: silver, with O-ring

HC-M-KV-M20(11-16) - Cable gland

1645998

<https://www.phoenixcontact.com/us/products/1645998>



Metal screw connection up to 5 bar, thread length: 6 mm, cable diameter: 11 - 16 mm, WAF 27, screw connection: M20

HC-B 06-TFL-N-M1M20S - Housing

1460343

<https://www.phoenixcontact.com/us/products/1460343>



HC-M-KV-M20(1ASI) - Cable gland

1584017

<https://www.phoenixcontact.com/us/products/1584017>



Metal screw connection for an AS-Interface flat-ribbon conductor, thread type M20

Phoenix Contact 2024 © - all rights reserved

<https://www.phoenixcontact.com>

Phoenix Contact USA
586 Fulling Mill Road
Middletown, PA 17057, United States
(+717) 944-1300
info@phoenixcon.com