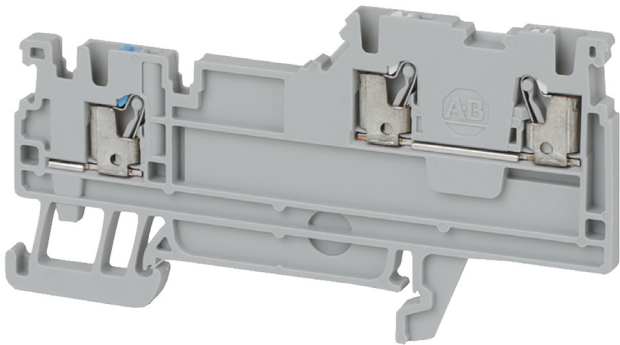


# 1492PS22

Allen-Bradley 1492-P Push-in Sensor Terminal 1.5mm 1 Level 2  
Conductor Entries Grey



Component type	Sensor/actuator terminal block
Range	1492P
Model	N/A
Product status	New Item



The Allen-Bradley 1492-P range of Push-in Terminal Blocks are reliable, safe and straightforward electrical connections designed for advanced wiring management. With cross-sectional wire sizes from 1.5mm<sup>2</sup> to 16mm<sup>2</sup> and various terminal types such as feed-through, disconnect, fused and plug-in. Available in single and multi-level housing with a wide range of accessories enabling quick installation.

ELECTRICAL	Rated voltage	250 V
	Type of electrical connection 1	Push-in clamp connection
	Rated current In	13.5 A
CONSTRUCTION	Colour	Grey
	Mounting method	DIN rail (top hat rail) 35 mm
MECHANICAL	Connectable conductor cross section solid-core	0-1.5 mm <sup>2</sup>
	Connectable conductor cross section multi-wired	0-1.5 mm <sup>2</sup>
DIMENSIONS	Width	3.5 mm
	Height	42 mm
	Depth	80 mm