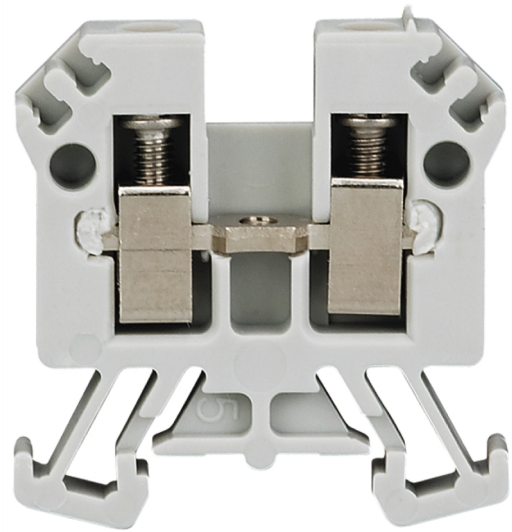


TERMINAL BLOCK 1 CONDUCTOR 2.5mm GRAY

Termination and Wiring Systems > Terminals and Pre-Wired Cables > Terminals - Screw > Allen-Bradley Terminal Blocks > Mini terminals > 2.5mm²



Mini Feed Through Terminal 3mm

- Copper current bar and tin-plated surface
- Counter-sinking of clamping screws
- Multiple center jumper options—screw-type or three channels for plug-in type
- Four-sided wire funnel guides for easy wire insertion
- Finger-safe housings to prevent accidental contact with live circuits
- Compatible with high visibility snap-in marker cards
- CE marked and UL recognised
- DIN Rail mountable, allowing terminal blocks to be placed on the same channel as contactors, starters, relays, and other control devices
- Self-extinguishing, polyamide 6.6 housing material with UL 94-V0 flammability rating

Representative Photo Only
(actual product may vary based on configuration selections)

SPECIFICATIONS	
Product Series	zz1492
Component Type Termination Wiring	Terminal
Colour, Body / Housing	Grey colour
Wire / Conductor Size (Min)	0.5 mm² min
Wire / Conductor Size (Max)	2.5 mm²
Wire Strip Length	6 mm
Tightening Torque, Min	0.47 Nm
Tightening Torque, Max	0.52 Nm
In, Rated Current	24 A
Un, Nominal Voltage	500 V
Height	29 mm
Width	5 mm
Depth	24.6 mm
Insulation Temperature (Min)	-40 °C
Insulation Temperature (Max)	90 °C

REFERENCES	
IECEX Certificate	-
Supplier Declaration of Conformity:	-
Installation Guide:	-
User Manual:	-
Manufacturer Datasheet:	-
Manufacturer Catalogue & Product Selection:	-