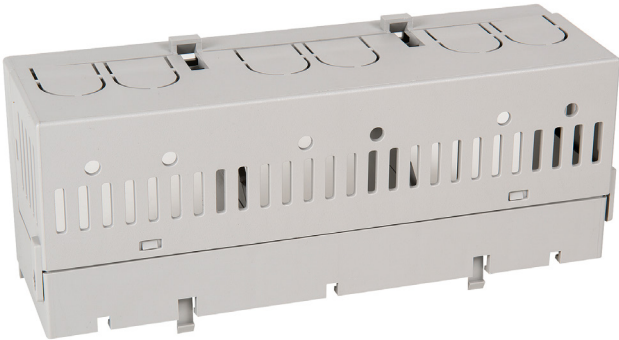


# 150TC2

Allen-Bradley SMC Flex Soft Starter Terminal Cover for IP20  
Rating for 150F 201 to 251A



Component type	Accessories/spare parts for electronic motor control and protection device
Range	SMC Flex
Model	N/A
Product status	Existing

The Allen-Bradley SMC Flex Soft Starters feature integral bypass and flexible communications providing advanced performance, diagnostics, and protection. Available with a current range from 5A to 1250A, modular in design for installation and commissioning, with built-in LCD displays and communication modules ensuring connection to multiple networks.

CONSTRUCTION	Accessory	Yes
--------------	-----------	-----