

# QPD W 3PE2,5 6-10 M25 1,0 BK - Panel feed-through



1582160

<https://www.phoenixcontact.com/us/products/1582160>

Please be informed that the data shown in this PDF document is generated from our online catalog. Please find the complete data in the user documentation. Our general terms of use for downloads are valid.



Panel feed-through, product family: QPD, connection method: Single wires/ IDC connection, number of positions: 3+PE, M25, Pin, 1 mm<sup>2</sup> ... 2.5 mm<sup>2</sup>, 690 V, 20 A, PA, black, with QUICKON nut, external cable diameter: 6 mm ... 10 mm, 2.5 mm<sup>2</sup>, wires cut flat at the end, cable length: 1 m

## Your advantages

- Innovative and time saving - QUICKON fast connection for time saving of up to 80 % for on-site connection
- Robust throughout: housing with IP68/IP69K and IK07 protection for a wide range of applications
- Safer connection with mechanical coding to protect against mismatching, and touch-proof protection in accordance with DIN EN 0105
- Efficient - by using panel feed-throughs, devices no longer need to be opened in order to connect cables

## Commercial data

Item number	1582160
Packing unit	1 pc
Note	Made to order (non-returnable)
Sales key	BF50
Product key	BF6ABB
Catalog page	Page 478 (C-2-2017)
GTIN	4046356316835
Weight per piece (including packing)	167.4 g
Weight per piece (excluding packing)	165.32 g
Customs tariff number	85366990
Country of origin	DE

# QPD W 3PE2,5 6-10 M25 1,0 BK - Panel feed-through



1582160

<https://www.phoenixcontact.com/us/products/1582160>

## Technical data

### Product properties

Type	QPD 4x2,5
Product type	Panel feed-through
Product family	QPD
Number of positions	4
Connection profile	3+PE
Position marking	1, 2, 3, PE
Number of connections	10
Number of connections per position	1
Coding	coded

### Insulation characteristics

Overvoltage category	III
Degree of pollution	3

### Connection data

#### Connection technology

Connection method On the device side	Single wires ()
Connection method On the field side	IDC connection
Frequency of connections between conductors of the same cross section	max. 10

#### Conductor connection

Conductor cross section flexibel	1 mm <sup>2</sup> ... 2.5 mm <sup>2</sup>
Conductor cross section solid	1 mm <sup>2</sup> ... 2.5 mm <sup>2</sup>
Connection cross section AWG	16 ... 14
Tightening torque Union nut	5 Nm
Tightening torque Locking nut	5 Nm
Wrench size Union nut	22 mm
Wrench size Locking nut	27 mm

### Dimensions

Dimensional drawing	
Width	29.6 mm
Height	29.6 mm
Length	71 mm
Diameter	29.6 mm
Wrench size for mounting	27 mm

# QPD W 3PE2,5 6-10 M25 1,0 BK - Panel feed-through



1582160

<https://www.phoenixcontact.com/us/products/1582160>

## Electrical properties

Rated surge voltage (II/2)	8 kV
Rated surge voltage (III/2)	8 kV
Rated surge voltage (III/3)	6 kV
Rated current	20 A
Contact resistance	< 3 mΩ
rated voltage (II/2)	1000 V
rated voltage (III/2)	1000 V
Rated voltage (III/3)	690 V
Nominal voltage $U_N$	690 V
Nominal current $I_N$	20 A

## Mechanical properties

### Mechanical data

Insertion/withdrawal cycles	max. 50
-----------------------------	---------

## Material specifications

Color	black (RAL 9005)
Material Housing	PA
Material Contact	Cu
Material Contact surface	Silver-plated
Flammability rating according to UL 94	V0
Material wire insulation	PVC / PE / rubber / TPE

## Cable/line

Cable length	1 m
Structure of individual litz in acc. with VDE 0295 / smallest wire diameter	VDE 0295 class 1 to 6/min. 0.15 mm
External cable diameter ( )	6 mm ... 10 mm
Wire diameter including insulation	2 mm ... 3.8 mm
Position marking	1, 2, 3, PE
Cable cross section	2.5 mm <sup>2</sup>
Material wire insulation	PVC / PE / rubber / TPE

## Mounting

Mounting type	Front mounting M25
Wrench size	27 mm

## Environmental and real-life conditions

### Ambient conditions

Degree of protection	IP66
	IP68 (2 m / 24 h)
	IP69K

# QPD W 3PE2,5 6-10 M25 1,0 BK - Panel feed-through

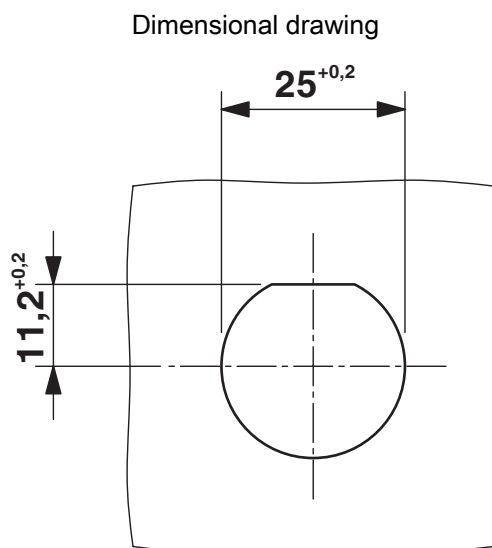
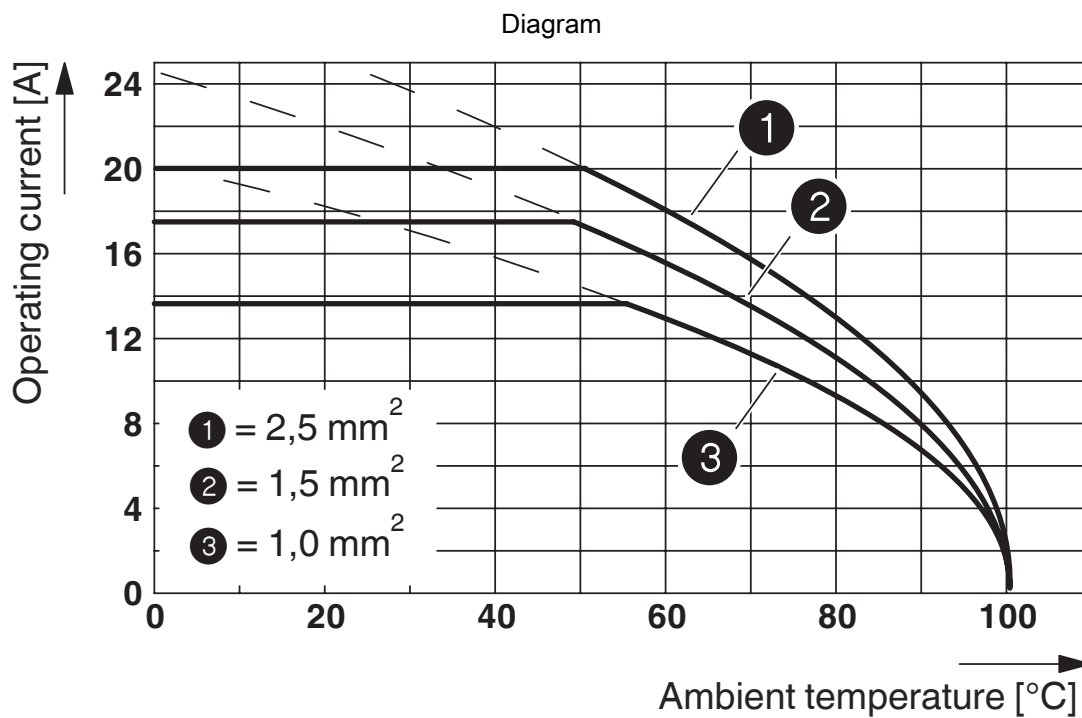


1582160

<https://www.phoenixcontact.com/us/products/1582160>

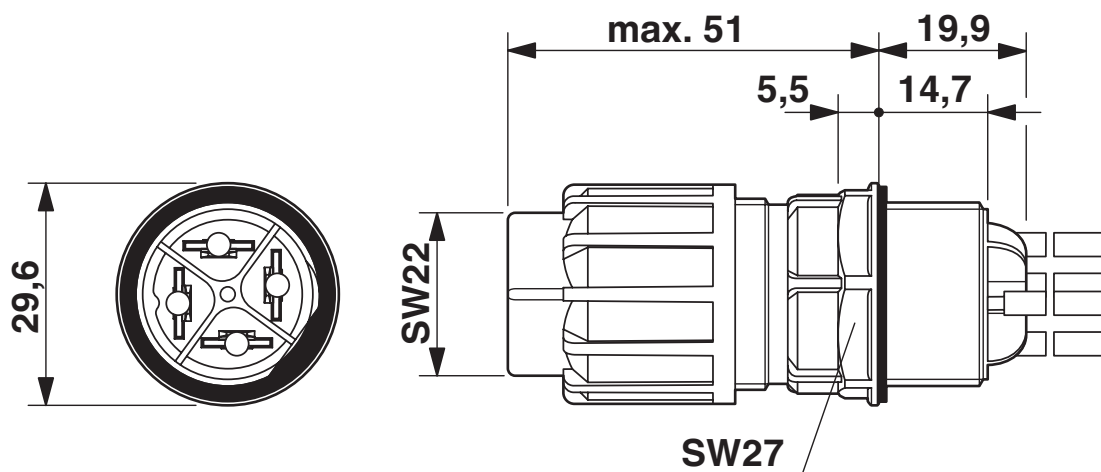
Ambient temperature (operation)	-40 °C ... 100 °C
Temperature when conductor connected	-5 °C ... 50 °C
Ambient temperature (storage/transport)	-40 °C ... 100 °C

## Drawings



Panel cutout

Dimensional drawing



# QPD W 3PE2,5 6-10 M25 1,0 BK - Panel feed-through



1582160

<https://www.phoenixcontact.com/us/products/1582160>

## Classifications

### ECLASS

ECLASS-11.0	27440602
ECLASS-13.0	27440602

### UNSPSC

UNSPSC 21.0	39121522
-------------	----------

# QPD W 3PE2,5 6-10 M25 1,0 BK - Panel feed-through



1582160

<https://www.phoenixcontact.com/us/products/1582160>

## Environmental product compliance

China RoHS	Environmentally Friendly Use Period = 50 years
	For information on hazardous substances, refer to the manufacturer's declaration available under "Downloads"

Phoenix Contact 2024 © - all rights reserved  
<https://www.phoenixcontact.com>

Phoenix Contact USA  
586 Fulling Mill Road  
Middletown, PA 17057, United States  
(+717) 944-1300  
[info@phoenixcon.com](mailto:info@phoenixcon.com)