

QPD W 4PE2,5 M25 1,0 BK - Panel feed-through



1582566

<https://www.phoenixcontact.com/no/products/1582566>

Please be informed that the data shown in this PDF document is generated from our online catalog. Please find the complete data in the user documentation. Our general terms of use for downloads are valid.



Panel feed-through, product family: QPD, connection method: Single wires (Welded-on), number of positions: 4+PE, M25, Pin, 1 mm² ... 2.5 mm², 690 V, 20 A, PA, black, without QUICKON nut, 2.5 mm², wires cut flat at the end, cable length: 1 m

Your advantages

- Innovative and time saving - QUICKON fast connection for time saving of up to 80 % for on-site connection
- Robust throughout: housing with IP68/IP69K and IK07 protection for a wide range of applications
- Safer connection with mechanical coding to protect against mismatching, and touch-proof protection in accordance with DIN EN 0105
- Efficient - by using panel feed-throughs, devices no longer need to be opened in order to connect cables

Commercial data

Item number	1582566
Packing unit	1 pc
Minimum order quantity	1 pc
Sales key	31BBF
Product key	BF6ACB
Catalog page	Page 484 (C-2-2019)
GTIN	4046356661997
Weight per piece (including packing)	187.1 g
Weight per piece (excluding packing)	49.81 g
Customs tariff number	85444290
Country of origin	PL

QPD W 4PE2,5 M25 1,0 BK - Panel feed-through



1582566

<https://www.phoenixcontact.com/no/products/1582566>

Technical data

Product properties

Type	QPD 5x2,5
Product type	Panel feed-through
Product family	QPD
Number of positions	5
Connection profile	4+PE
Position marking	1, 2, 3, N, PE
Number of connections	10
Number of connections per position	1
Coding	coded

Insulation characteristics

Overvoltage category	III
Degree of pollution	3

Connection data

Connection technology

Connection method On the device side	Single wires (Welded-on)
Frequency of connections between conductors of the same cross section	max. 10

Conductor connection

Conductor cross section flexibel	1 mm² ... 2.5 mm²
Conductor cross section solid	1 mm² ... 2.5 mm²
Connection cross section AWG	16 ... 14
Tightening torque Union nut	10 Nm
Tightening torque Locking nut	5 Nm
Wrench size Union nut	27 mm
Wrench size Locking nut	30 mm

Pin assignment

Contact Color (signal designation) Contact (optional)	1 BK
	2 BN
	3 GY
	N BU
	PE GNYE

Dimensions

Dimensional drawing	
---------------------	--

QPD W 4PE2,5 M25 1,0 BK - Panel feed-through



1582566

<https://www.phoenixcontact.com/no/products/1582566>

Width	34.6 mm
Height	34.6 mm
Length	53 mm
Diameter	34.6 mm
Wrench size for mounting	27 mm

Electrical properties

Rated surge voltage (II/2)	8 kV
Rated surge voltage (III/2)	8 kV
Rated surge voltage (III/3)	6 kV
Rated current	20 A
Contact resistance	< 3 mΩ
rated voltage (II/2)	1000 V
rated voltage (III/2)	1000 V
Rated voltage (III/3)	690 V
Nominal voltage U_N	690 V AC
	690 V DC
Nominal current I_N	20 A

Mechanical properties

Mechanical data

Insertion/withdrawal cycles	max. 50
-----------------------------	---------

Material specifications

Color	black (RAL 9005)
Material Housing	PA
Material Contact	Cu
Material Contact surface	Silver-plated
Flammability rating according to UL 94	V0
Material wire insulation	PVC /PE / rubber / TPE

Cable/line

Cable length	1 m
Structure of individual litz in acc. with VDE 0295 / smallest wire diameter	VDE 0295 class 1 to 6/min. 0.15 mm
Wire diameter including insulation	2 mm ... 3.8 mm
Position marking	1, 2, 3, N, PE
Single wire, color	black, brown, gray, blue, green/yellow
Cable cross section	2.5 mm ²
Material wire insulation	PVC/PE/TPE/rubber

Mounting

Mounting type	Front mounting M25
Wrench size	27 mm

QPD W 4PE2,5 M25 1,0 BK - Panel feed-through



1582566

<https://www.phoenixcontact.com/no/products/1582566>

Environmental and real-life conditions

Ambient conditions

Degree of protection	IP66
	IP68 (2 m / 24 h)
	IP69K
Ambient temperature (operation)	-40 °C ... 100 °C
Temperature when conductor connected	-5 °C ... 50 °C
Ambient temperature (storage/transport)	-40 °C ... 80 °C

QPD W 4PE2,5 M25 1,0 BK - Panel feed-through

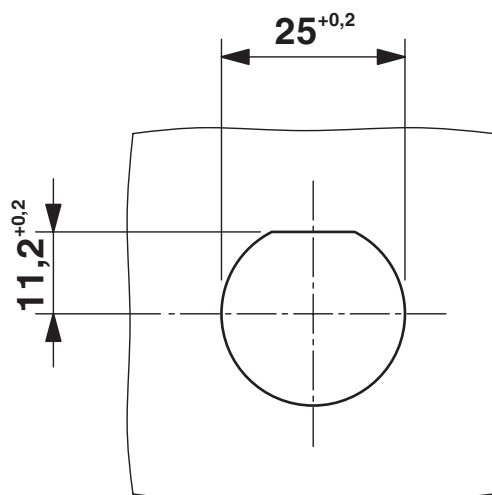
1582566

<https://www.phoenixcontact.com/no/products/1582566>



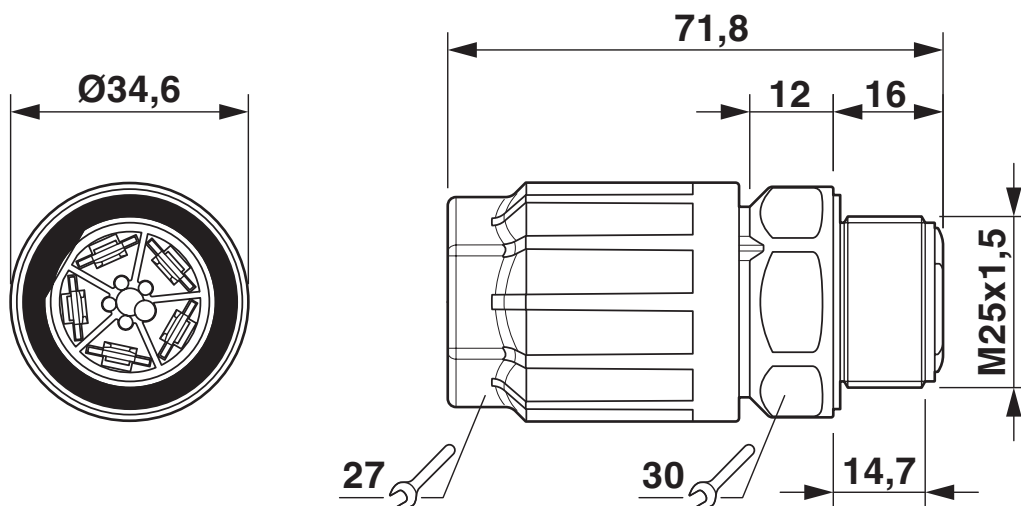
Drawings

Dimensional drawing



Panel cutout

Dimensional drawing



QPD W 4PE2.5 M25 dimensional drawing

QPD W 4PE2,5 M25 1,0 BK - Panel feed-through




1582566


<https://www.phoenixcontact.com/no/products/1582566>

Approvals


To download certificates, visit the product detail page: <https://www.phoenixcontact.com/no/products/1582566>




IECEE CB Scheme
Approval ID: DE1-65875




EAC
Approval ID: RU C-DE.BL08.B.00511




DNV GL
Approval ID: TAE00003J5



VDE Zeichengenehmigung
Approval ID: 40029149

	UL Listed Approval ID: E468743			
		Nominal voltage U_N	Nominal current I_N	Cross section AWG
		600 V	10 A	-

	cUL Listed Approval ID: E468743			
		Nominal voltage U_N	Nominal current I_N	Cross section AWG
		600 V	10 A	- 14

cULus Listed

QPD W 4PE2,5 M25 1,0 BK - Panel feed-through



1582566

<https://www.phoenixcontact.com/no/products/1582566>

Classifications

ECLASS

ECLASS-11.0	27440602
ECLASS-13.0	27440602
ECLASS-12.0	27440602

ETIM

ETIM 9.0	EC002566
----------	----------

UNSPSC

UNSPSC 21.0	39121500
-------------	----------

QPD W 4PE2,5 M25 1,0 BK - Panel feed-through



1582566

<https://www.phoenixcontact.com/no/products/1582566>

Environmental product compliance

China RoHS	Environmentally friendly use period: unlimited = EFUP-e
	No hazardous substances above threshold values

Phoenix Contact 2024 © - all rights reserved
<https://www.phoenixcontact.com>

PHOENIX CONTACT AS
Strømsveien 344
N-1081 Oslo
+47 22 07 68 00
norge@phoenixcontact.com