

HC-B 24-SML-67/M1M25 - Housing



1586934

<https://www.phoenixcontact.com/us/products/1586934>

Please be informed that the data shown in this PDF document is generated from our online catalog. Please find the complete data in the user documentation. Our general terms of use for downloads are valid.



Box mounting base, with single locking latch, height 67 mm, with screw connection, 1x M25

Commercial data

Item number	1586934
Packing unit	1 pc
Note	Made to order (non-returnable)
Sales key	BF55
Product key	BF7AAC
Catalog page	Page 573 (PC-2011)
GTIN	4046356427029
Weight per piece (including packing)	450 g
Weight per piece (excluding packing)	450 g
Customs tariff number	85389099
Country of origin	DE

HC-B 24-SML-67/M1M25 - Housing



1586934

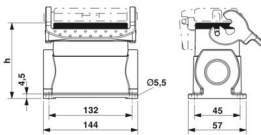
<https://www.phoenixcontact.com/us/products/1586934>

Technical data

Product properties

Product type	Housing with locking latch
Housing type	Box mounting bases
Application	Standard
Type	B24
No. of cable outlets	1
Type of the screw connection	1x M25
Shielded	no
Cable outlet	left (view of the opened single locking latch)
Pg screw connection	with

Dimensions

Dimensional drawing	
Width	57 mm
Height	67 mm
Length	144 mm
Wrench size, union nut	25 mm

Material specifications

Material Screw connection	Brass, nickel-plated
Seal material Cable seal	NBR
Housing material	die-cast aluminum
Housing surface material	Powder-coated, gray
Locking latch material	Stainless steel, handle: PA

Mechanical properties

Mechanical data

Type of the screw connection	1x M25
Locking type	Latch

Cable/line

External cable diameter Cable 1	9 mm ... 18 mm
---------------------------------	----------------

Connection data

External cable diameter	9 mm ... 18 mm
-------------------------	----------------

Environmental and real-life conditions

HC-B 24-SML-67/M1M25 - Housing

1586934

<https://www.phoenixcontact.com/us/products/1586934>



Ambient conditions

Degree of protection	IP65
Ambient temperature (operation)	-40 °C ... 125 °C

HC-B 24-SML-67/M1M25 - Housing

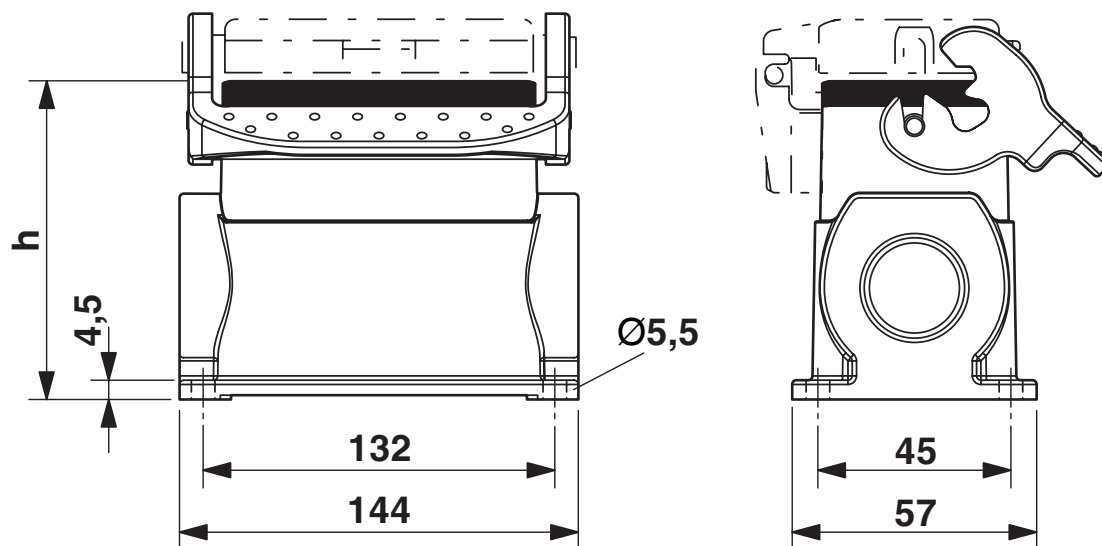
1586934

<https://www.phoenixcontact.com/us/products/1586934>



Drawings

Dimensional drawing



Dimensional drawing; h = 67 mm

HC-B 24-SML-67/M1M25 - Housing



1586934

<https://www.phoenixcontact.com/us/products/1586934>

Classifications

ECLASS

ECLASS-11.0	27440202
ECLASS-13.0	27440202

UNSPSC

UNSPSC 21.0	31261501
-------------	----------

HC-B 24-SML-67/M1M25 - Housing

1586934

<https://www.phoenixcontact.com/us/products/1586934>



Environmental product compliance

EU RoHS	
Fulfills EU RoHS substance requirements	Yes, No exemptions
China RoHS	
Environment friendly use period (EFUP)	EFUP-E
	No hazardous substances above the limits
EU REACH SVHC	
REACH candidate substance (CAS No.)	No substance above 0.1 wt%

HC-B 24-SML-67/M1M25 - Housing

1586934

<https://www.phoenixcontact.com/us/products/1586934>



Accessories

G-INS-M25-M68N-NNES-S - Cable gland

1411165

<https://www.phoenixcontact.com/us/products/1411165>



Cable gland, material for screw connection: Brass, nickel-plated, application: Standard, external cable diameter 11 mm ... 17 mm, shielding: no, connecting thread: M25 x 1.5, color: silver, with O-ring

HC-M-KV-M25(14-21) - Cable gland

1646007

<https://www.phoenixcontact.com/us/products/1646007>



Metal screw connection up to 5 bar, thread length: 7 mm, cable diameter: 14 - 21 mm, WAF 34, screw connection: M25

HC-B 24-SML-67/M1M25 - Housing

1586934

<https://www.phoenixcontact.com/us/products/1586934>



HC-M-KV-M25(1ASI) - Cable gland

1584020

<https://www.phoenixcontact.com/us/products/1584020>



Metal screw connection for an AS-Interface flat-ribbon conductor, thread type M25

HC-M-KV-M25(1X10/1X11) - Cable gland

1580228

<https://www.phoenixcontact.com/us/products/1580228>



Special cable screw connection M25, brass nickel-plated, grommet with 10 mm and 11 mm holes

Phoenix Contact 2024 © - all rights reserved
<https://www.phoenixcontact.com>

Phoenix Contact USA
586 Fulling Mill Road
Middletown, PA 17057, United States
(+717) 944-1300
info@phoenixcon.com