

RC-16S1N120000 - Contact insert



1600816

<https://www.phoenixcontact.com/us/products/1600816>

Please be informed that the data shown in this PDF document is generated from our online catalog. Please find the complete data in the user documentation. Our general terms of use for downloads are valid.



Contact insert, M23, number of positions: 16, contact connection type: Socket, Solder cup, series: NC, RC, RM, TU, UC, Alternative product in accordance with RoHS II without Exemption 6c (Pb < 0.1 %) item no.: 1241250

Commercial data

| | |
|--------------------------------------|---------------|
| Item number | 1600816 |
| Packing unit | 10 pc |
| Minimum order quantity | 10 pc |
| Sales key | AB31 |
| Product key | ABRAFU |
| GTIN | 4046356231855 |
| Weight per piece (including packing) | 8.24 g |
| Weight per piece (excluding packing) | 8.24 g |
| Customs tariff number | 85366990 |
| Country of origin | DE |

RC-16S1N120000 - Contact insert

1600816

<https://www.phoenixcontact.com/us/products/1600816>



Technical data

Product properties

| | |
|---------------------|----------------|
| Product type | Contact insert |
| Series | NC |
| | RC |
| | RM |
| | TU |
| | UC |
| Application | Signal |
| Number of positions | 16 |
| Connection profile | 16 |
| Coding | N |
| Thread type | M23 |

Electrical properties

Contact

| | |
|--------------------------------|----------------------|
| Contact diameter | 1 mm |
| Min. cross section | 0.08 mm ² |
| Max. cross section | 1 mm ² |
| Max. current | 8 A |
| Nominal voltage U _N | 48 V AC 74 V DC |
| Overvoltage category | III |
| Degree of pollution | 3 |
| Rated surge voltage | 1.5 kV |

Connection data

| | |
|-------------------|------------|
| Connection method | Solder cup |
|-------------------|------------|

Material specifications

| | |
|--------------------|-----------------------------|
| Insulator material | PBT |
| Contact material | CuZn |
| Contact surface | Nickel-plated, gold coating |

Connector

| | |
|-----------------------|----------|
| Direction of rotation | Standard |
|-----------------------|----------|

Mechanical properties

Mechanical data

| | |
|-----------------------------|----|
| Insertion/withdrawal cycles | 50 |
|-----------------------------|----|

RC-16S1N120000 - Contact insert

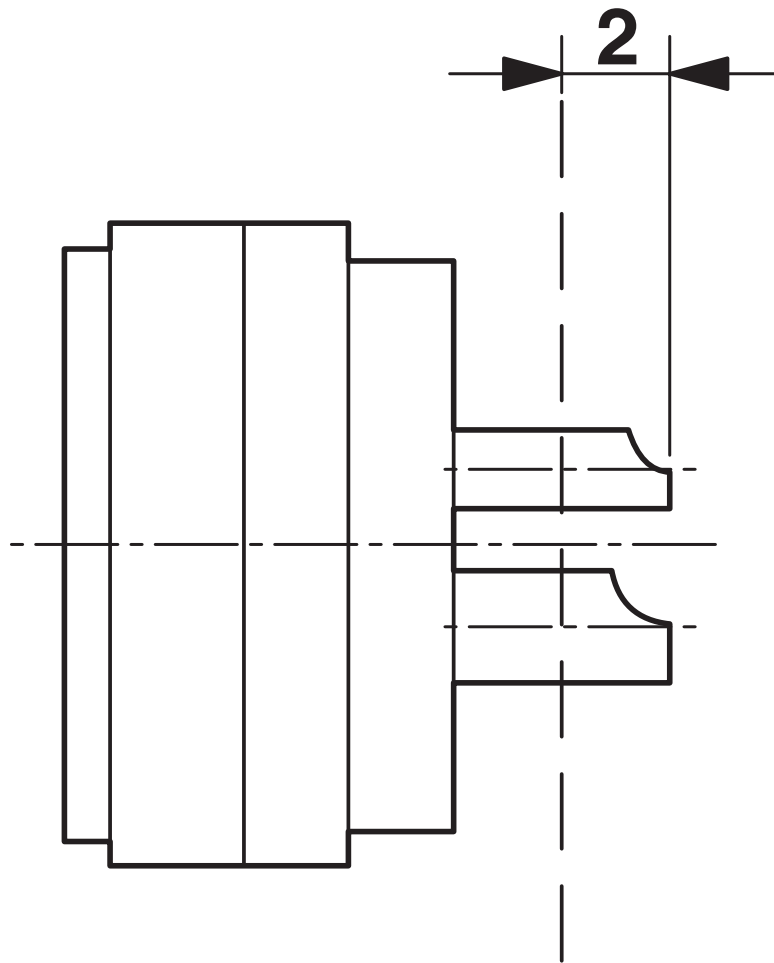


1600816

<https://www.phoenixcontact.com/us/products/1600816>

Drawings

Schematic diagram



Dimensional drawing

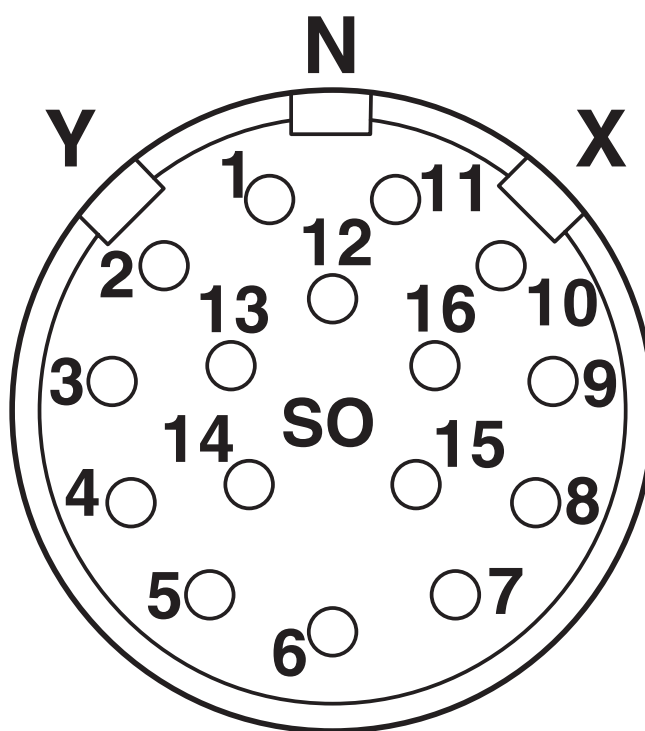
RC-16S1N120000 - Contact insert

1600816

<https://www.phoenixcontact.com/us/products/1600816>



Schematic diagram



Connector pin assignment

RC-16S1N120000 - Contact insert



1600816

<https://www.phoenixcontact.com/us/products/1600816>

Classifications

ECLASS

| | |
|-------------|----------|
| ECLASS-11.0 | 27440223 |
| ECLASS-12.0 | 27440223 |
| ECLASS-13.0 | 27440223 |

ETIM

| | |
|----------|----------|
| ETIM 9.0 | EC003557 |
|----------|----------|

UNSPSC

| | |
|-------------|----------|
| UNSPSC 21.0 | 39121400 |
|-------------|----------|

RC-16S1N120000 - Contact insert



1600816
<https://www.phoenixcontact.com/us/products/1600816>

Environmental product compliance

| | |
|---|---|
| EU RoHS | |
| Fulfills EU RoHS substance requirements | Yes |
| Exemption | 6(c) |
| China RoHS | |
| Environment friendly use period (EFUP) | EFUP-50 |
| | An article-related China RoHS declaration table can be found in the download area for the respective article under "Manufacturer declaration". For all articles with EFUP-E, no China RoHS declaration table issued and required. |
| EU REACH SVHC | |
| REACH candidate substance (CAS No.) | Lead(CAS: 7439-92-1) |
| SCIP | 7190dee7-2662-4026-8fe7-3e1e436db308 |

Phoenix Contact 2024 © - all rights reserved
<https://www.phoenixcontact.com>

Phoenix Contact USA
586 Fulling Mill Road
Middletown, PA 17057, United States
(+717) 944-1300
info@phoenixcon.com