

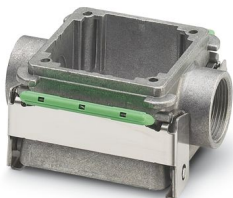
DC-B 6-HD-M25/M25-M - Stackable housing



1602070

<https://www.phoenixcontact.com/us/products/1602070>

Please be informed that the data shown in this PDF document is generated from our online catalog. Please find the complete data in the user documentation. Our general terms of use for downloads are valid.



DUPLICON, aluminum stackable housing for DUPLICON contact inserts, type B6, IP67 protection, with two locking latches, gasket and two M25 cable screw connection threads (without cable screw connection)

Commercial data

Item number	1602070
Packing unit	10 pc
Minimum order quantity	10 pc
Sales key	B10
Product key	BF7BAA
Catalog page	Page 679 (C-2-2017)
GTIN	4046356027779
Weight per piece (including packing)	173.82 g
Weight per piece (excluding packing)	173.82 g
Customs tariff number	85389099
Country of origin	SI

DC-B 6-HD-M25/M25-M - Stackable housing



1602070

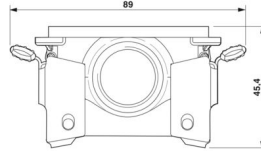
<https://www.phoenixcontact.com/us/products/1602070>

Technical data

Product properties

Housing type	Stackable housing
Type	DC-B6
Type of the screw connection	With 2x M25 thread
Cable outlet	lateral
Pg screw connection	none

Dimensions

Dimensional drawing	
Width	45.4 mm
Height	37 mm
Length	89 mm

Material specifications

Color	pearl gray
Material Housing	die-cast aluminum
Seal material	NBR
Housing material	die-cast aluminum
Locking latch material	Stainless steel

Mechanical properties

Mechanical data

Type of the screw connection	With 2x M25 thread
Locking type	Latch
Insertion/withdrawal cycles	≥ 100

Environmental and real-life conditions

Ambient conditions

Degree of protection	IP65
	IP66
	IP67
	IP65/IP66/IP67
Ambient temperature (operation)	-40 °C ... 125 °C
Ambient temperature (storage/transport)	-40 °C ... 125 °C

DC-B 6-HD-M25/M25-M - Stackable housing

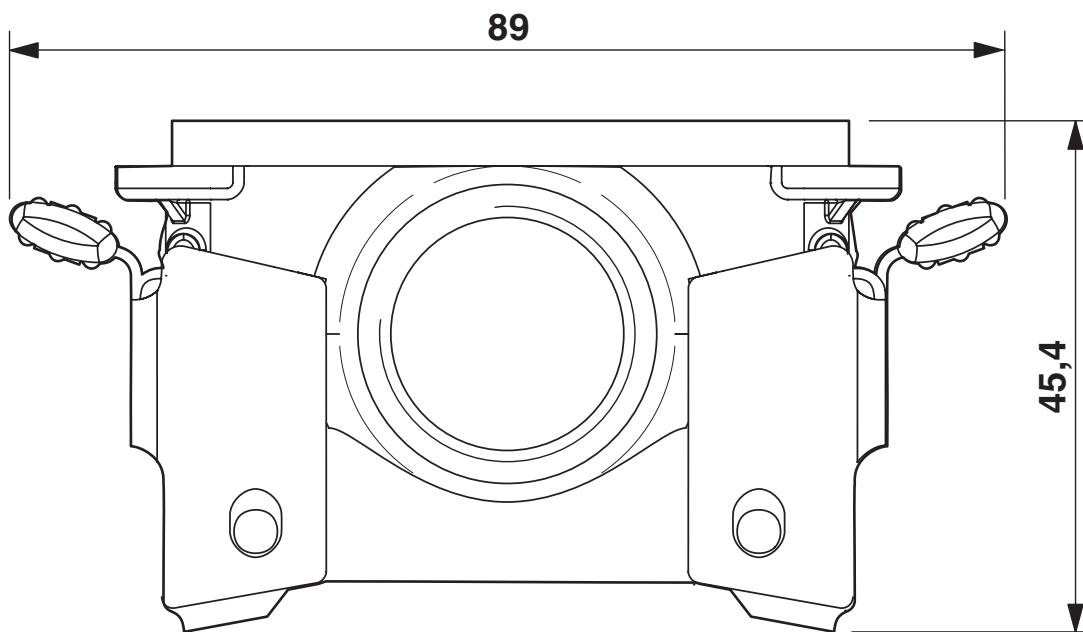


1602070

<https://www.phoenixcontact.com/us/products/1602070>

Drawings

Dimensional drawing



Dimensional drawing

DC-B 6-HD-M25/M25-M - Stackable housing



1602070

<https://www.phoenixcontact.com/us/products/1602070>

Classifications

ECLASS

ECLASS-11.0	27440202
ECLASS-12.0	27440202
ECLASS-13.0	27440202

UNSPSC

UNSPSC 21.0	31261501
-------------	----------

Environmental product compliance

China RoHS	
Environment friendly use period (EFUP)	EFUP-E
	No hazardous substances above the limits
EU REACH SVHC	
REACH candidate substance (CAS No.)	No substance above 0.1 wt%

DC-B 6-HD-M25/M25-M - Stackable housing



1602070

<https://www.phoenixcontact.com/us/products/1602070>

Accessories

DC-B 6-A-HD-G - Seal

1602326

<https://www.phoenixcontact.com/us/products/1602326>

DUPLICON, profile gasket for stackable housing, made of conductive EPDM



HC-M-KV-M20(11-16) - Cable gland

1645998

<https://www.phoenixcontact.com/us/products/1645998>

Metal screw connection up to 5 bar, thread length: 6 mm, cable diameter: 11 - 16 mm, WAF 27, screw connection: M20



DC-B 6-HD-M25/M25-M - Stackable housing

1602070

<https://www.phoenixcontact.com/us/products/1602070>



G-INS-M20-S68N-NNES-S - Cable gland

1411163

<https://www.phoenixcontact.com/us/products/1411163>



Cable gland, material for screw connection: Brass, nickel-plated, application: Standard, external cable diameter 6 mm ... 12 mm, shielding: no, connecting thread: M20 x 1.5, color: silver, with O-ring

EML (26,5X12)R SR - Label

0816854

<https://www.phoenixcontact.com/us/products/0816854>



Label, Roll, silver, unlabeled, can be labeled with: THERMOMARK E.300 (D)/600 (D), THERMOMARK ROLL 2.0, THERMOMARK ROLL, THERMOMARK ROLL X1, THERMOMARK ROLLMASTER 300/600, THERMOMARK X1.2, mounting type: adhesive, lettering field size: 26.5 x 12 mm, Number of individual labels: 2500

Phoenix Contact 2024 © - all rights reserved
<https://www.phoenixcontact.com>

Phoenix Contact USA
586 Fulling Mill Road
Middletown, PA 17057, United States
(+717) 944-1300
info@phoenixcon.com