

HC-B 24-SMQ-67/O1M25 - Housing

1604835

<https://www.phoenixcontact.com/us/products/1604835>



Please be informed that the data shown in this PDF document is generated from our online catalog. Please find the complete data in the user documentation. Our general terms of use for downloads are valid.



HEAVYCON box mounting base B24, with double locking latch, height 67 mm, with support 1xM25

Commercial data

Item number	1604835
Packing unit	1 pc
Note	Made to order (non-returnable)
Sales key	BF55
Product key	BF7AAC
Catalog page	Page 534 (C-4-2013)
GTIN	4017918881511
Weight per piece (including packing)	413.83 g
Weight per piece (excluding packing)	413.83 g
Customs tariff number	85389099
Country of origin	DE

HC-B 24-SMQ-67/O1M25 - Housing

1604835

<https://www.phoenixcontact.com/us/products/1604835>



Technical data

Notes

General	For contact inserts HC-B24, BB46, BBB64, D64, DD108, M
---------	--

Product properties

Product type	Housing with locking latch
Housing type	Box mounting bases
Application	Standard
Type	B24
No. of cable outlets	1
Type of the screw connection	1x M25
Shielded	no
Cable outlet	lateral
Pg screw connection	none

Dimensions

Dimensional drawing	<p>The technical drawing shows two views of the lamp base. The left view is a top-down perspective showing a rectangular base with rounded corners. Dimensions include a total width of 166 mm, a central opening width of 132 mm, and a base width of 144 mm. A height dimension of 67 mm is shown on the left. A small circular feature is labeled Ø5,5. The right view is a side profile showing a U-shaped top with a width of 57 mm and a base width of 45 mm.</p>
Width	57 mm
Height	67 mm
Length	144 mm

Material specifications

Seal material	NBR
Housing material	die-cast aluminum
Housing surface material	Powder-coated, gray
Locking latch material	Stainless steel, handle: PA

Mechanical properties

Mechanical data

Type of the screw connection	1x M25
Locking type	Latch

Mounting

Assembly note	For half and full screw connections
---------------	-------------------------------------

Environmental and real-life conditions

Ambient conditions

Degree of protection	IP65
----------------------	------

HC-B 24-SMQ-67/O1M25 - Housing

1604835

<https://www.phoenixcontact.com/us/products/1604835>



Ambient temperature (operation)	-40 °C ... 125 °C
---------------------------------	-------------------

HC-B 24-SMQ-67/O1M25 - Housing

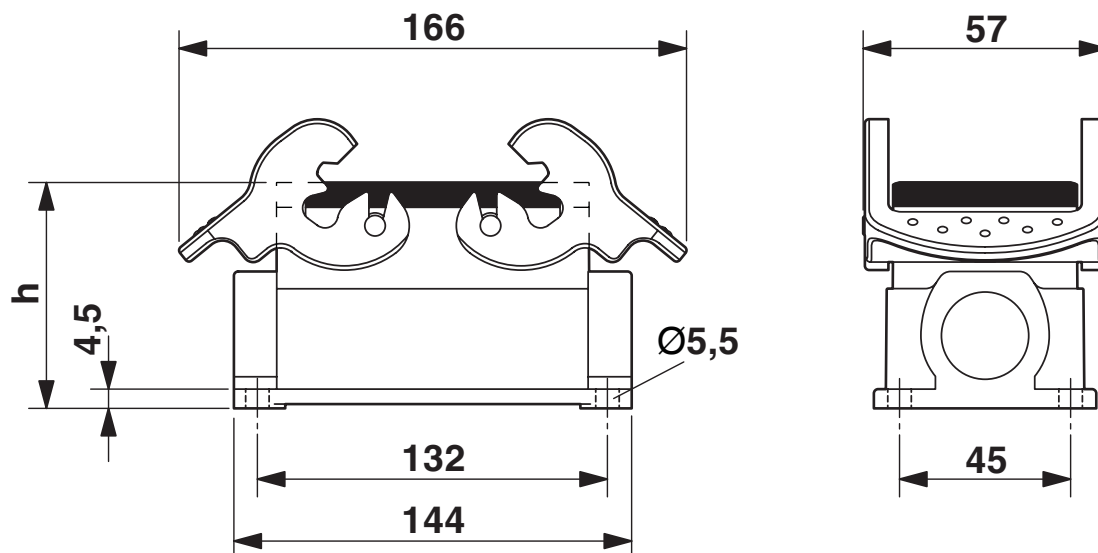
1604835

<https://www.phoenixcontact.com/us/products/1604835>



Drawings

Dimensional drawing



Dimensional drawing

HC-B 24-SMQ-67/O1M25 - Housing

1604835

<https://www.phoenixcontact.com/us/products/1604835>



Classifications

ECLASS

ECLASS-11.0	27440202
ECLASS-13.0	27440202

UNSPSC

UNSPSC 21.0	31261501
-------------	----------

Environmental product compliance

China RoHS

Environment friendly use period (EFUP)	EFUP-E
	No hazardous substances above the limits

EU REACH SVHC

REACH candidate substance (CAS No.)	No substance above 0.1 wt%
-------------------------------------	----------------------------

HC-B 24-SMQ-67/O1M25 - Housing

1604835

<https://www.phoenixcontact.com/us/products/1604835>



Accessories

G-INS-M25-M68N-PNES-GY - Cable gland

1411126

<https://www.phoenixcontact.com/us/products/1411126>



Cable gland, material for screw connection: PA, application: Standard, external cable diameter 11 mm ... 17 mm, shielding: no, connecting thread: M25 x 1.5, color: silver-grey RAL 7001

G-INS-M25-M68N-PNES-BK - Cable gland

1411134

<https://www.phoenixcontact.com/us/products/1411134>



Cable gland, material for screw connection: PA, application: Standard, external cable diameter 11 mm ... 17 mm, shielding: no, connecting thread: M25 x 1.5, color: jet black RAL 9005

HC-B 24-SMQ-67/O1M25 - Housing

1604835

<https://www.phoenixcontact.com/us/products/1604835>



G-INS-M25-M68N-NNES-S - Cable gland

1411165

<https://www.phoenixcontact.com/us/products/1411165>



Cable gland, material for screw connection: Brass, nickel-plated, application: Standard, external cable diameter 11 mm ... 17 mm, shielding: no, connecting thread: M25 x 1.5, color: silver, with O-ring

HC-M-KV-M25(14-21) - Cable gland

1646007

<https://www.phoenixcontact.com/us/products/1646007>



Metal screw connection up to 5 bar, thread length: 7 mm, cable diameter: 14 - 21 mm, WAF 34, screw connection: M25

HC-B 24-SMQ-67/O1M25 - Housing

1604835

<https://www.phoenixcontact.com/us/products/1604835>



G-INSEC-M25-S68N-NCRS-S - Cable gland

1411190

<https://www.phoenixcontact.com/us/products/1411190>



Cable gland, material for screw connection: Brass, nickel-plated, application: EMC, external cable diameter 11 mm ... 16 mm, shielding: yes, connecting thread: M25 x 1.5, color: silver, with O-ring

G-INESR-M25-M68N-NEPDS-S - Cable gland

1415193

<https://www.phoenixcontact.com/us/products/1415193>



Cable gland, material for screw connection: Brass, nickel-plated, application: Standard, external cable diameter 9 mm ... 17 mm, shielding: no, connecting thread: M25 x 1.5, color: silver, with external strain relief, with O-ring

HC-B 24-SMQ-67/O1M25 - Housing

1604835

<https://www.phoenixcontact.com/us/products/1604835>



HC-M-KV-T-M25 - Cable gland

1646191

<https://www.phoenixcontact.com/us/products/1646191>

Metal screw connection with cable bend protection and strain relief, thread length: 7 mm, cable sealing area: 10 - 19 mm, clamping area: 14 - 21 mm, SW 30, screw connection: M25



REDUC-M-KV-M25/M20 - Reducing adapter

1647624

<https://www.phoenixcontact.com/us/products/1647624>

Reducing adapter, connecting thread: M25 x 1.5, color: silver, with O-ring



HC-B 24-SMQ-67/O1M25 - Housing

1604835

<https://www.phoenixcontact.com/us/products/1604835>



ENLAR-M-KV-M25/M32 - Extension adapter

1647679

<https://www.phoenixcontact.com/us/products/1647679>

Extension adapter, connecting thread: M25 x 1.5, color: silver, with O-ring



HC-M-BS-M25 - Screw plug

1645859

<https://www.phoenixcontact.com/us/products/1645859>

Screw plug, material for screw connection: Brass, nickel-plated, connecting thread: M25 x 1.5, color: silver



Phoenix Contact 2024 © - all rights reserved
<https://www.phoenixcontact.com>

Phoenix Contact USA
586 Fulling Mill Road
Middletown, PA 17057, United States
(+717) 944-1300
info@phoenixcon.com