

HC-B 16-SMLD-67/O2PG21 - Housing



1673724

<https://www.phoenixcontact.com/us/products/1673724>

Please be informed that the data shown in this PDF document is generated from our online catalog. Please find the complete data in the user documentation. Our general terms of use for downloads are valid.



Box mounting base, with single locking latch, height 67 mm, with a support 2x Pg21, with a protective cover

Commercial data

Item number	1673724
Packing unit	1 pc
Note	Made to order (non-returnable)
Sales key	BF55
Product key	BF7AAC
Catalog page	Page 512 (C-4-2013)
GTIN	4017918152475
Weight per piece (including packing)	427 g
Weight per piece (excluding packing)	427 g
Customs tariff number	85389099
Country of origin	DE

HC-B 16-SMLD-67/O2PG21 - Housing



1673724

<https://www.phoenixcontact.com/us/products/1673724>

Technical data

Notes

General	For contact inserts HC-B16, BB32, BBB40, D40, DD72, HS6, M, K
---------	---

Product properties

Product type	Housing with locking latch
Housing type	Box mounting bases
Application	Standard
Type	B16
No. of cable outlets	2
Type of the screw connection	2x Pg21
Protective cover	yes
Cable outlet	lateral
Pg screw connection	none

Dimensions

Dimensional drawing	
Width	57 mm
Height	67 mm
Length	117 mm

Material specifications

Seal material	NBR
Housing material	die-cast aluminum
Housing surface material	Powder-coated, gray
Material, protective cover	PA
Locking latch material	Stainless steel, handle: PA

Mechanical properties

Mechanical data

Type of the screw connection	2x Pg21
Locking type	Latch

Environmental and real-life conditions

Ambient conditions

Degree of protection	IP65 (When plugged in)
	IP54 (with closed protective cover)

HC-B 16-SMLD-67/O2PG21 - Housing

1673724

<https://www.phoenixcontact.com/us/products/1673724>



Ambient temperature (operation)	-40 °C ... 125 °C
---------------------------------	-------------------

HC-B 16-SMLD-67/O2PG21 - Housing

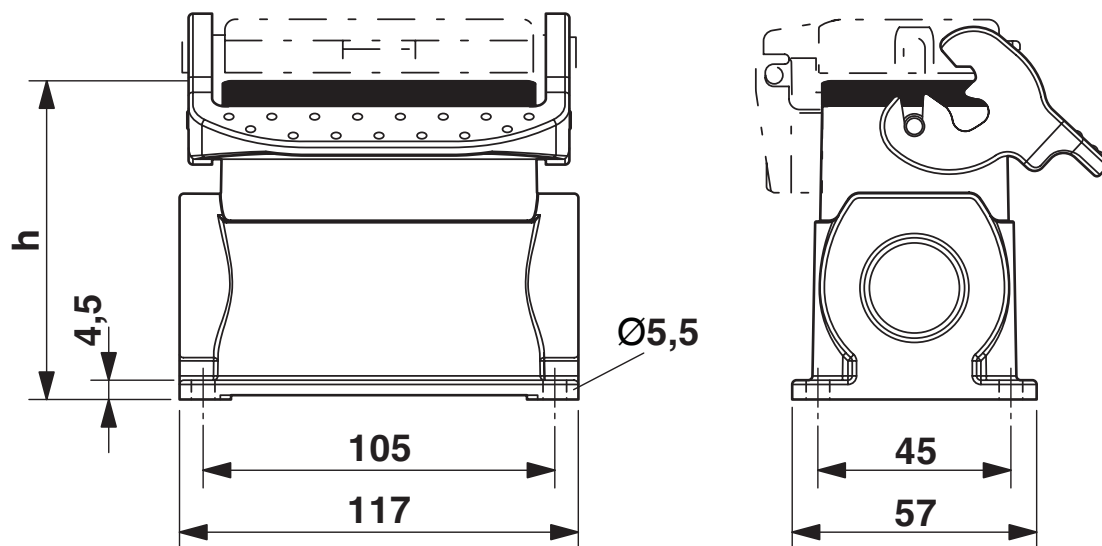
1673724

<https://www.phoenixcontact.com/us/products/1673724>



Drawings

Dimensional drawing



Dimensional drawing; h = 67 mm

HC-B 16-SMLD-67/O2PG21 - Housing



1673724

<https://www.phoenixcontact.com/us/products/1673724>

Classifications

ECLASS

ECLASS-11.0	27440202
ECLASS-13.0	27440202

UNSPSC

UNSPSC 21.0	31261501
-------------	----------

Environmental product compliance

EU RoHS	
Fulfills EU RoHS substance requirements	Yes, No exemptions
China RoHS	
Environment friendly use period (EFUP)	EFUP-E
	No hazardous substances above the limits
EU REACH SVHC	
REACH candidate substance (CAS No.)	No substance above 0.1 wt%

HC-B 16-SMLD-67/O2PG21 - Housing



1673724

<https://www.phoenixcontact.com/us/products/1673724>

Accessories

G-INS-PG21-M68N-PNES-GY - Cable gland

1411145

<https://www.phoenixcontact.com/us/products/1411145>



Cable gland, material for screw connection: PA, application: Standard, external cable diameter 13 mm ... 18 mm, shielding: no, connecting thread: Pg21, color: silver-grey RAL 7001

G-INS-PG21-M68N-NNES-S - Cable gland

1411175

<https://www.phoenixcontact.com/us/products/1411175>



Cable gland, material for screw connection: Brass, nickel-plated, application: Standard, external cable diameter 13 mm ... 18 mm, shielding: no, connecting thread: Pg21, color: silver, with O-ring

HC-B 16-SMLD-67/O2PG21 - Housing

1673724

<https://www.phoenixcontact.com/us/products/1673724>



G-INSEC-PG21-M68N-NNES-S - Cable gland

1411200

<https://www.phoenixcontact.com/us/products/1411200>



Cable gland, material for screw connection: Brass, nickel-plated, application: EMC, external cable diameter 13 mm ... 18 mm, shielding: yes, connecting thread: Pg21, color: silver, with O-ring

HC-BS-PG21 - Screw plug

1674529

<https://www.phoenixcontact.com/us/products/1674529>



Screw plug, material for screw connection: Brass, nickel-plated, connecting thread: Pg21, color: silver

Phoenix Contact 2024 © - all rights reserved
<https://www.phoenixcontact.com>

Phoenix Contact USA
586 Fulling Mill Road
Middletown, PA 17057, United States
(+717) 944-1300
info@phoenixcon.com