

# HC-B 16-SMLD-84/O2PG21 - Housing



1677911

<https://www.phoenixcontact.com/sg/products/1677911>

Please be informed that the data shown in this PDF document is generated from our online catalog. Please find the complete data in the user documentation. Our general terms of use for downloads are valid.



Box mounting base, with single locking latch, height 84 mm, with a support 2x PG21, with a protective cover

## Commercial data

Item number	1677911
Packing unit	10 pc
Minimum order quantity	1 pc
Note	Made to order (non-returnable)
Sales key	0200*
Product key	BF7AAC
Catalog page	Page 512 (C-4-2013)
GTIN	4017918151515
Weight per piece (including packing)	501.4 g
Weight per piece (excluding packing)	501.4 g
Customs tariff number	85389099
Country of origin	DE

# HC-B 16-SMLD-84/O2PG21 - Housing



1677911

<https://www.phoenixcontact.com/sg/products/1677911>

## Technical data

### Notes

General	For contact inserts HC-B16, BB32, BBB40, D40, DD72, HS6, M, K
---------	---

### Product properties

Product type	Housing with locking latch
Housing type	Box mounting bases
Application	Standard
Type	B16
No. of cable outlets	2
Type of the screw connection	2x Pg21
Protective cover	yes
Cable outlet	lateral
Pg screw connection	none

### Dimensions

Dimensional drawing	
Width	57 mm
Height	84 mm
Length	117 mm

### Material specifications

Seal material	NBR
Housing material	Die-cast aluminum
Housing surface material	Powder-coated, gray
Material, protective cover	PA
Locking latch material	Stainless steel, handle: PA

### Mechanical properties

#### Mechanical data

Type of the screw connection	2x Pg21
Locking type	Latch

### Environmental and real-life conditions

#### Ambient conditions

Degree of protection	IP65 (When plugged in)
	IP54 (with closed protective cover)

# HC-B 16-SMLD-84/O2PG21 - Housing

1677911

<https://www.phoenixcontact.com/sg/products/1677911>



Ambient temperature (operation)	-40 °C ... 125 °C
---------------------------------	-------------------

# HC-B 16-SMLD-84/O2PG21 - Housing

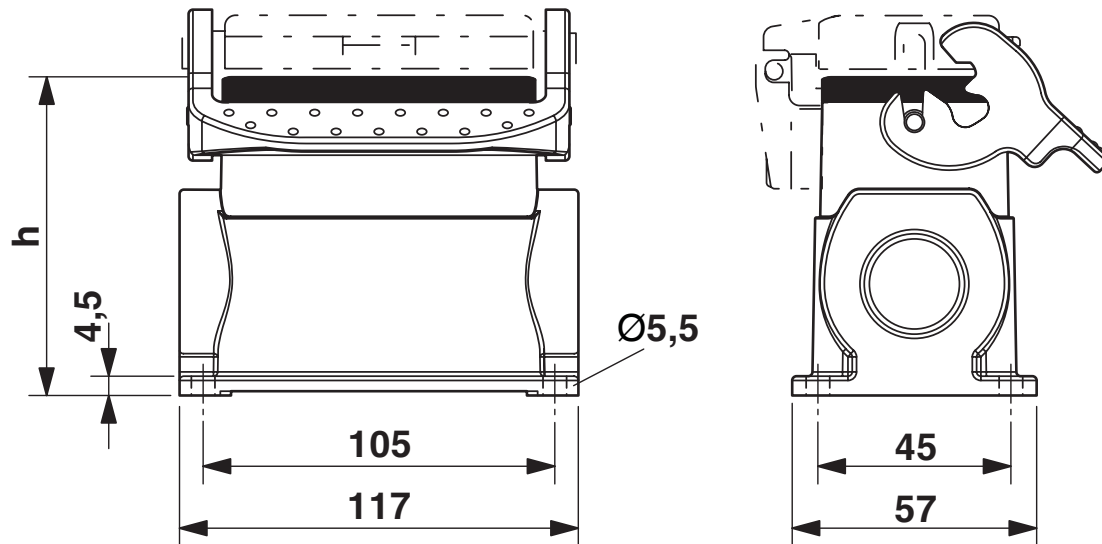
1677911

<https://www.phoenixcontact.com/sg/products/1677911>



## Drawings

Dimensional drawing



Dimensional drawing

# HC-B 16-SMLD-84/O2PG21 - Housing



1677911

<https://www.phoenixcontact.com/sg/products/1677911>

## Classifications

### ECLASS

ECLASS-11.0	27440202
ECLASS-13.0	27440202

# HC-B 16-SMLD-84/O2PG21 - Housing



1677911  
<https://www.phoenixcontact.com/sg/products/1677911>

## Environmental product compliance

EU RoHS	
Fulfills EU RoHS substance requirements	Yes, No exemptions
China RoHS	
Environment friendly use period (EFUP)	EFUP-E
	No hazardous substances above the limits
EU REACH SVHC	
REACH candidate substance (CAS No.)	No substance above 0.1 wt%

Phoenix Contact 2024 © - all rights reserved  
<https://www.phoenixcontact.com>

PHOENIX CONTACT SEA Pte. Ltd.  
105 Eunos Avenue 3, #04-00  
Singapore 409836  
+65 6228 4900  
[marketing@phoenixcontact.com.sg](mailto:marketing@phoenixcontact.com.sg)