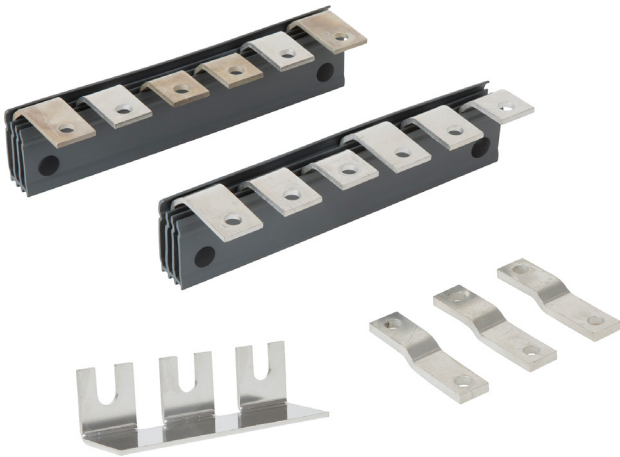


# 170PW146

Allen-Bradley 100E Star Delta Starter Power Connection Links  
100E 116 to 146A



Component type	Accessories/spare parts for low-voltage switch technology
Range	100E
Model	N/A
Product status	New Item

The Allen-Bradley 100-E next-generation contactors are available in a range of sizes from 9 to 2650 A, reducing width and weight while maximising panel space. The universal electronic AC/DC coil makes selection easy and offers significant energy savings and direct connection to PLCs for contactors above 100 A.

## CONSTRUCTION

Accessory	Yes
Type of accessory/spare part	Connecting bridge