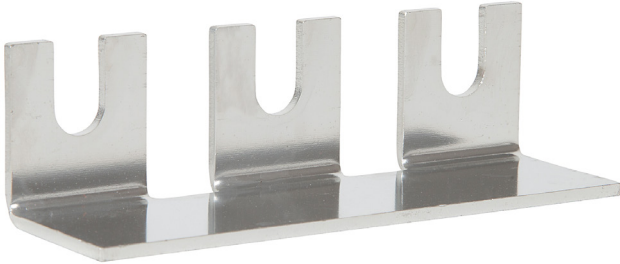


170PWY750

Allen-Bradley 100E Star Point Shorting Link for 100E 580 to 750A



Component type	Accessories/spare parts for low-voltage switch technology
Range	100E
Model	N/A
Product status	New Item



The Allen-Bradley 100-E next-generation contactors are available in a range of sizes from 9 to 2650 A, reducing width and weight while maximising panel space. The universal electronic AC/DC coil makes selection easy and offers significant energy savings and direct connection to PLCs for contactors above 100 A.

CONSTRUCTION	Accessory	Yes
	Type of accessory/spare part	Connecting bridge