

# HC-B 24-SFQD-67/M2PG21 - Housing



1772023

<https://www.phoenixcontact.com/ie/products/1772023>

Please be informed that the data shown in this PDF document is generated from our online catalog. Please find the complete data in the user documentation. Our general terms of use for downloads are valid.



Box mounting base, for double locking latch, height 67 mm, with screw connection, 2x Pg21, with protective covers

## Commercial data

Item number	1772023
Packing unit	10 pc
Minimum order quantity	1 pc
Note	Made to order (non-returnable)
Sales key	BF
Product key	BF7AAC
Catalog page	Page 585 (PC-2011)
GTIN	4017918036690
Weight per piece (including packing)	459.84 g
Weight per piece (excluding packing)	459.84 g
Customs tariff number	85389099
Country of origin	DE

# HC-B 24-SFQD-67/M2PG21 - Housing



1772023

<https://www.phoenixcontact.com/ie/products/1772023>

## Technical data

### Notes

General	For contact inserts HC-B24, BB46, BBB64, D64, DD108, M
---------	--

### Product properties

Product type	Housing with locking latch
Housing type	Box mounting bases
Application	Standard
Type	B24
No. of cable outlets	2
Type of the screw connection	2x Pg21
Protective cover	yes
Shielded	no
Cable outlet	lateral
Pg screw connection	with

### Dimensions

Dimensional drawing	
Width	57 mm
Height	67 mm
Length	144 mm
Wrench size, union nut	28 mm

### Material specifications

Material Screw connection	Brass, nickel-plated
Seal material Cable seal	NBR
Housing material	die-cast aluminum
Housing surface material	Powder-coated, gray
Material, protective cover	PA

### Mechanical properties

#### Mechanical data

Type of the screw connection	2x Pg21
Locking type	Pin

### Cable/line

External cable diameter Cable 1	10 mm ... 19 mm (Cable 1)
External cable diameter Cable 2	10 mm ... 19 mm (Cable 2)

# HC-B 24-SFQD-67/M2PG21 - Housing



1772023

<https://www.phoenixcontact.com/ie/products/1772023>

## Connection data

External cable diameter	10 mm ... 19 mm (Cable 1)
-------------------------	---------------------------

## Environmental and real-life conditions

### Ambient conditions

Degree of protection	IP65 (When plugged in)
Ambient temperature (operation)	-40 °C ... 125 °C

# HC-B 24-SFQD-67/M2PG21 - Housing

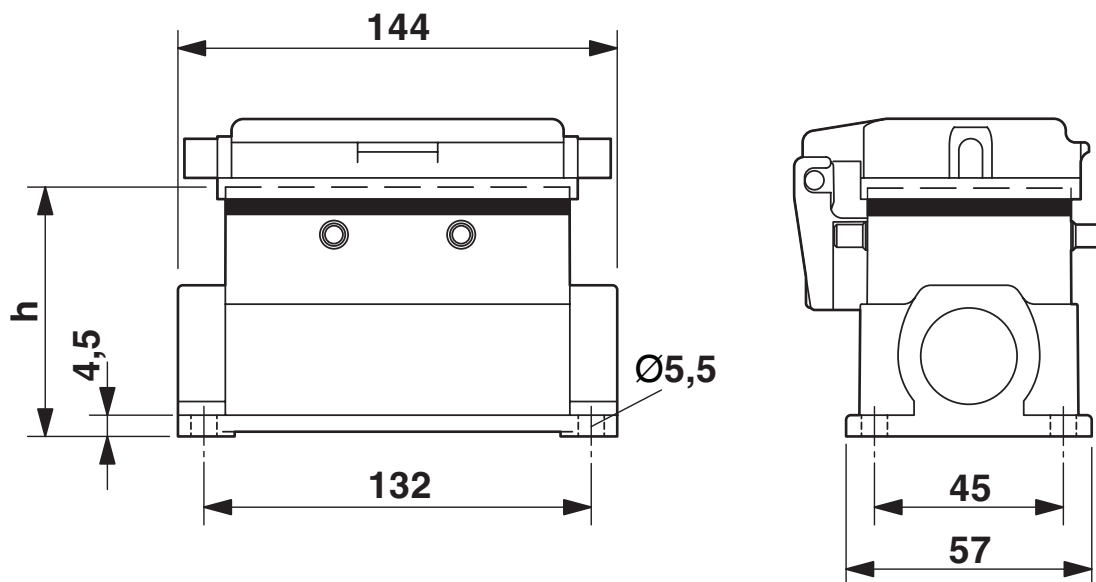
1772023

<https://www.phoenixcontact.com/ie/products/1772023>



## Drawings

Dimensional drawing



Dimensional drawing

# HC-B 24-SFQD-67/M2PG21 - Housing



1772023

<https://www.phoenixcontact.com/ie/products/1772023>

## Classifications

### ECLASS

ECLASS-11.0	27440202
ECLASS-13.0	27440202

### UNSPSC

UNSPSC 21.0	31261501
-------------	----------

Environmental product compliance

EU RoHS	
Fulfills EU RoHS substance requirements	Yes, No exemptions
China RoHS	
Environment friendly use period (EFUP)	EFUP-E
	No hazardous substances above the limits
EU REACH SVHC	
REACH candidate substance (CAS No.)	No substance above 0.1 wt%

Phoenix Contact 2024 © - all rights reserved  
<https://www.phoenixcontact.com>

Phoenix Contact (Ireland) Ltd  
C6 The Exchange, Calmount Park, Ballymount  
Dublin 12, D12 XE18  
+353/1/2051-300  
[info@phoenixcontact.ie](mailto:info@phoenixcontact.ie)