

# HC-B 32-SMQ-72/M1PG29 - Housing



1775703

<https://www.phoenixcontact.com/us/products/1775703>

Please be informed that the data shown in this PDF document is generated from our online catalog. Please find the complete data in the user documentation. Our general terms of use for downloads are valid.

Box mounting base, with double locking latch, height 72 mm, with screw connection, 1x Pg29



## Commercial data

Item number	1775703
Packing unit	1 pc
Note	Made to order (non-returnable)
Sales key	BF55
Product key	BF7AAC
Catalog page	Page 581 (PC-2011)
GTIN	4017918038274
Weight per piece (including packing)	576.83 g
Weight per piece (excluding packing)	576.61 g
Customs tariff number	85389099
Country of origin	DE

# HC-B 32-SMQ-72/M1PG29 - Housing

1775703

<https://www.phoenixcontact.com/us/products/1775703>



## Technical data

### Notes

General	For contact inserts HC-B32, DD144, M
---------	--------------------------------------

### Product properties

Type	B32
Product type	Housing with locking latch
Application	Standard
No. of cable outlets	1
Type of the screw connection	1x Pg29
Housing type	Box mounting bases
Shielded	no
Cable outlet	lateral
Pg screw connection	with

### Dimensions

Dimensional drawing	
Width	81.5 mm
Height	72 mm
Length	124 mm
Wrench size, union nut	37 mm

### Material specifications

Material Screw connection	Brass, nickel-plated
Seal material Cable seal	NBR
Housing surface material	Powder-coated, gray
Locking latch material	Steel, galvanized
Housing material	die-cast aluminum

### Mechanical properties

#### Mechanical data

Type of the screw connection	1x Pg29
Locking type	Latch

### Cable/line

External cable diameter (Cable 1)	18 mm ... 27 mm
-----------------------------------	-----------------

### Environmental and real-life conditions

# HC-B 32-SMQ-72/M1PG29 - Housing



1775703

<https://www.phoenixcontact.com/us/products/1775703>

## Ambient conditions

Degree of protection	IP65
Ambient temperature (operation)	-40 °C ... 125 °C

# HC-B 32-SMQ-72/M1PG29 - Housing

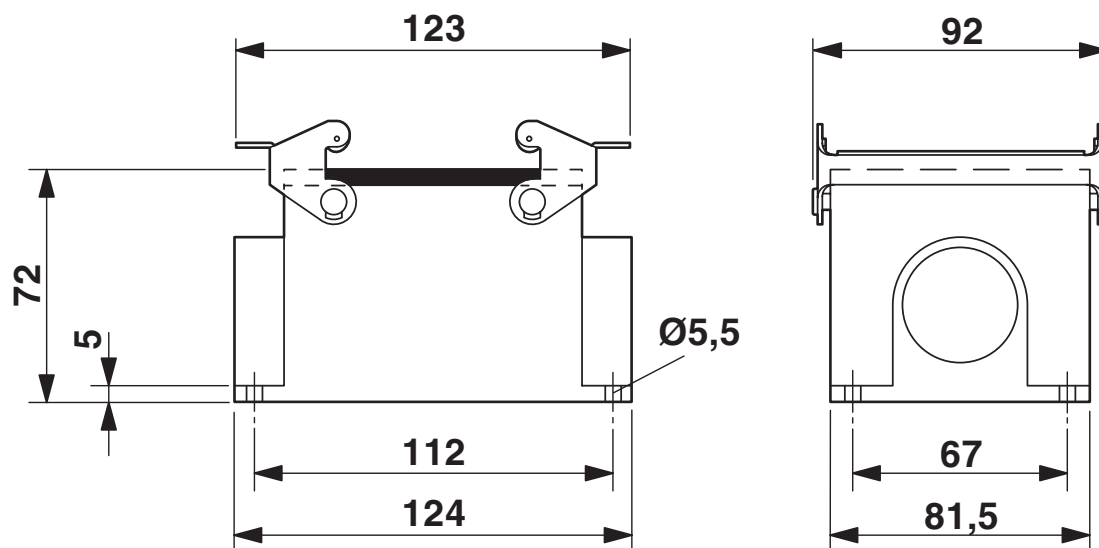
1775703

<https://www.phoenixcontact.com/us/products/1775703>



## Drawings

Dimensional drawing



Dimensional drawing

# HC-B 32-SMQ-72/M1PG29 - Housing



1775703

<https://www.phoenixcontact.com/us/products/1775703>

## Classifications

### ECLASS

ECLASS-11.0	27440202
ECLASS-13.0	27440202

### UNSPSC

UNSPSC 21.0	31261501
-------------	----------

# HC-B 32-SMQ-72/M1PG29 - Housing



1775703

<https://www.phoenixcontact.com/us/products/1775703>

## Environmental product compliance

China RoHS	Environmentally friendly use period: unlimited = EFUP-e
	No hazardous substances above threshold values

Phoenix Contact 2024 © - all rights reserved  
<https://www.phoenixcontact.com>

Phoenix Contact USA  
586 Fulling Mill Road  
Middletown, PA 17057, United States  
(+717) 944-1300  
[info@phoenixcon.com](mailto:info@phoenixcon.com)