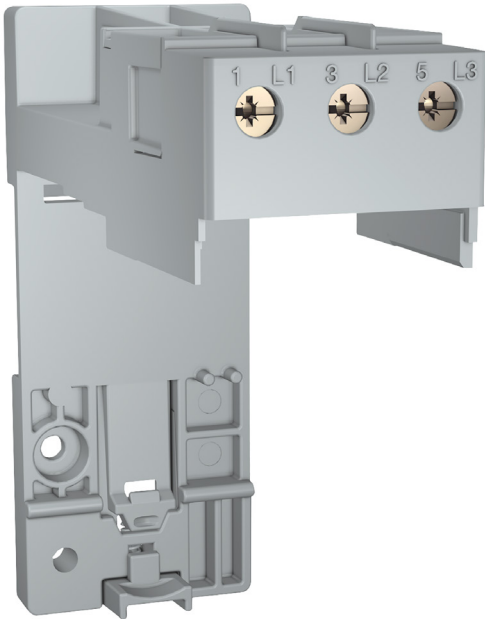


1931EPD

Allen-Bradley E100 Separate Mounting Adapter E100 Frame D



Component type	Accessories/spare parts for overload protection device
Range	E100
Model	N/A
Product status	Existing

The Allen-Bradley E100 Electronic Overload Relays are the next generation basic-tier electronic overload relays. Accurately measuring a motor's current load and temperature, it can de-energise the motor minimising potential equipment damage due to overheating. The enhanced features better safeguard motor protection investments including increased accuracy and repeatability, a self-powered design with lower heat dissipation, and the certifications to comply with many applications. Available with optional customisable accessory modules including ground fault/jam, remote reset and/or indication, anti-tamper shields, DIN rail/panel mounting, and external current transformer

configurations.

CONSTRUCTION	Accessory	Yes
	Type of accessory/spare part	Mounting bracket
DIMENSIONS	Height	112.4 mm
	Width	44.8 mm
	Depth	105.2 mm