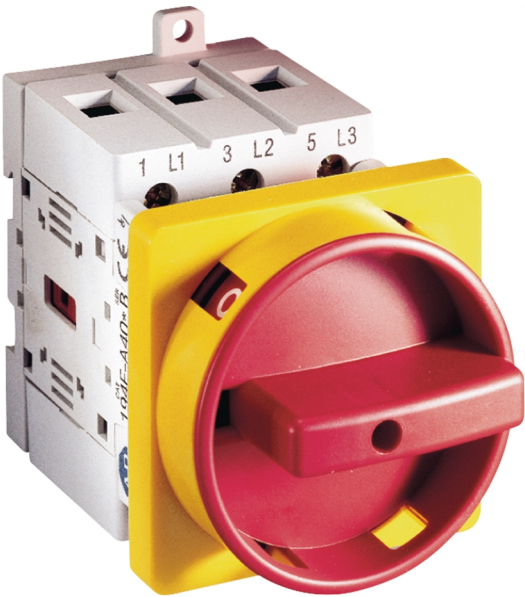


**LBS FRONT/DOOR ON-OFF TYPE N ACT R/Y 3P 16A**

Power Distribution and Protection > Isolators and Transfer Switches > Load Break Switches > Allen-Bradley Load Break Switches > 194E Load Break Switches (16 to 100A) > Front / Door Mounting



**LOAD BREAK SWITCH UL/IEC TYPE N ACT R/Y 194E DOOR MOUNT 3P 16A**

- Suitable as At-Motor Disconnect Switch (UL508) useful for overseas application with added UL requirements
- Bulletin 194R also suitable as service entrance disconnecting (UL98) providing even greater application use
- Greater installation flexibility with selection of front/door or DIN/base mounting configurations (194E series only)
- Padlockable Handles Available (up to 3 padlocks) for added security
- Wide range of accessories available which is flexible in adapting to various applications and reduces the cost of management and storage

Representative Photo Only  
(actual product may vary based on configuration selections)

SPECIFICATIONS	
Product Series	Bul. 194E
Operator Type	Off/On Switch (Isolator) type
Number of Poles	3
Ui, Rated Insulation Voltage	690 V (rms)
Uimp, Impulse Withstand Voltage	8 kV
Ie, Rated Operational Current, AC-21a, 415V	16 A@415V
Ie, Rated Operational Current, AC-21a, 690V	16 A@690V
kW Rating, AC-23a, 400V, 3ph	7.5 kW @400V
kW Rating, AC-23a, 690V, 3ph	7.5 kW @690V
Operating Temperature, Min	-25 °C min
Operating Temperature, Max	60 °C max
Storage Temperature, Min	-40 °C min
Storage Temperature, Max	80 °C max

REFERENCES	
IECEx Certificate	-
Supplier Declaration of Conformity:	-
Installation Guide:	-
User Manual:	-
Manufacturer Datasheet:	-
Manufacturer Catalogue & Product Selection:	-