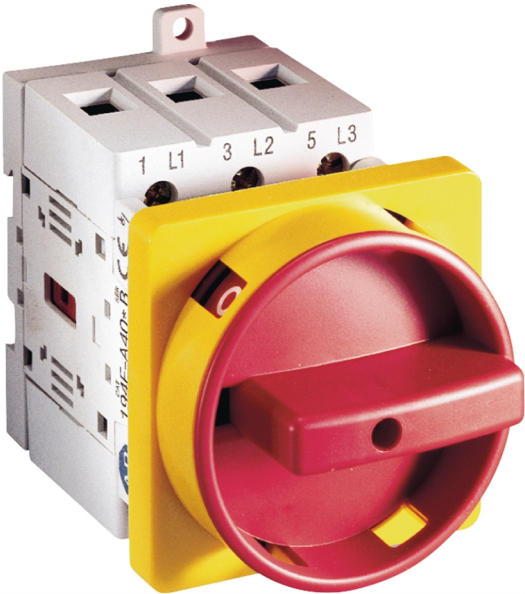


Catalogue No: **194E-E25-1753-6N**

LBS FRONT/DOOR ON-OFF TYPE N ACT R/Y 3P 25A

Power Distribution and Protection > Isolators and Transfer Switches > Load Break Switches > Allen-Bradley Load Break Switches > 194E Load Break Switches (16 to 100A) > Front / Door Mounting



Representative Photo Only
(actual product may vary based on configuration selections)

LBS 25AMP 3PHASEC/W ACTUATOR

- Suitable as At-Motor Disconnect Switch (UL508) useful for overseas application with added UL requirements
- Bulletin 194R also suitable as service entrance disconnecting (UL98) providing even greater application use
- Greater installation flexibility with selection of front/door or DIN/base mounting configurations (194E series only)
- Padlockable Handles Available (up to 3 padlocks) for added security
- Wide range of accessories available which is flexible in adapting to various applications and reduces the cost of management and storage

SPECIFICATIONS	
Product Series	Bul. 194E
Operator Type	Off/On Switch (Isolator) type
Number of Poles	3
Ui, Rated Insulation Voltage	690 V (rms)
Uimp, Impulse Withstand Voltage	8 kV
Operating Temperature, Min	-25 °C min
Operating Temperature, Max	60 °C max
Storage Temperature, Min	-40 °C min
Storage Temperature, Max	80 °C max

REFERENCES	
IECEX Certificate	-
Supplier Declaration of Conformity:	-
Installation Guide:	-
User Manual:	-
Manufacturer Datasheet:	-
Manufacturer Catalogue & Product Selection:	-