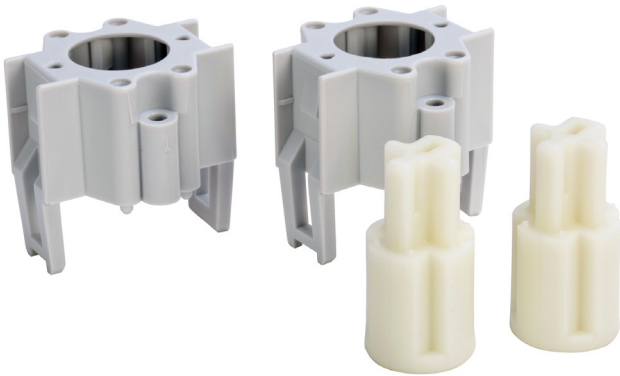


# 194LG2853

Allen-Bradley 194L Shaft Extension 24mm for Base Mount  
194LA and 194EA



Component type	Accessories/spare parts for terminals
Range	194L
Model	N/A
Product status	Existing



The Allen-Bradley 194L range of rotary cam switches are designed for use in control and load switching based applications rated from 12A to 40A. Modular in design and available with a range of frame sizes, faceplate and switch body designs for various switching configurations. Optional accessories include shaft extensions and enclosures for various applications.

## CONSTRUCTION

Type of accessory/spare part	Shaft
Accessory	Yes