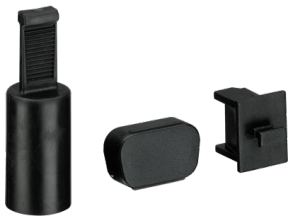




PRODUCT-DETAILS

TA535

Protective caps set. For AC500-XC. 10x for D-Sub 9 poles, 20x for RJ45, 3x for RJ45 female, 10x for FBP (TA535)



General Information	
Extended Product Type	TA535
Product ID	1SAP182300R0001
ABB Type Designation	TA535
EAN	4016779916066
Catalog Description	Protective caps set. For AC500-XC. 10x for D-Sub 9 poles, 20x for RJ45 female, 10x for FBP (TA535)
Long Description	TA535: AC500 Protective caps set. For AC500-XC. 10x for D-Sub 9 poles, 20x for RJ45, 3x for RJ45 female, 10x for FBP.

Ordering	
CN8	85389099
Invoice Description	Protective caps set. For AC500-XC. 10x for D-Sub 9 poles, 20x for RJ45, 3x for RJ45 female, 10x for FBP (TA535)
Made To Order	No
Minimum Order Quantity	1 piece
Order Multiple	1 piece
Selling Unit of Measure	piece

Dimensions

Product Net Weight	0.051 kg
Product Net Depth / Length	50 mm
Product Net Height	250 mm
Product Net Width	150 mm
Gross Weight	0.051 kg

Technical

Function	For AC500-XC. 10x for D-Sub 9 poles, 20x for RJ45, 3x for RJ45 female, 10x for FBP
Degree of Protection	IP20
Accessory Type	Mechanical: Protection cap

Additional Information

Product Main Type	TA535
Product Name	Distributed Automation PLCs

External Classifications and Standards

eClass	27-24-22-92
ETIM 8	EC002584 - Accessories/spare parts for controls
ETIM 9	EC002584 - Accessories/spare parts for controls
ETIM 10	EC002584 - Accessories/spare parts for controls
UNSPSC	32151703

Environmental

WEEE Category	Product Not in WEEE Scope
---------------	---------------------------

Categories

PLC Automation → Programmable Logic Controllers PLCs → AC500 → Accessories
PLC Automation → Programmable Logic Controllers PLCs → AC500-XC → Accessories

