

Operator Terminals CP400

Performance and Comfort,
your Best Choice for Operator Terminals



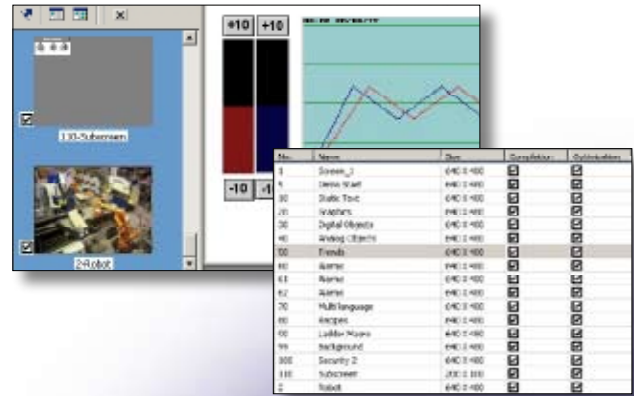
Performance and Comfort, your Best Choice for

Performance

Quick and easy project creation and management

Quickly view and easily manage your project components using the **screen manager** (detailed list or screen miniatures).

Simplify the creation, modification, sorting and identification of your project data via the **cross-references** function.

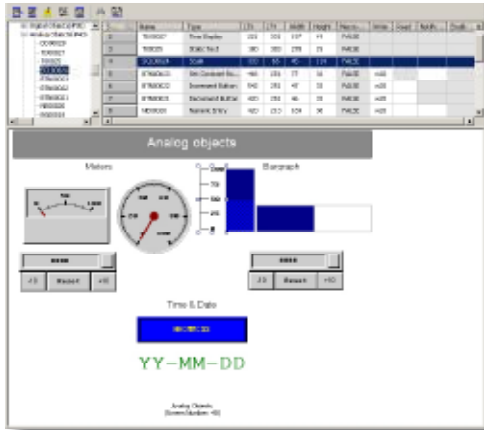


Easy testing and use

Test your projects, screens and alarms as well as your communication and controller functions quickly via **on- and off-line simulation**.

Change language quickly and easily using the **multi-language support** function.

Secured data and operations

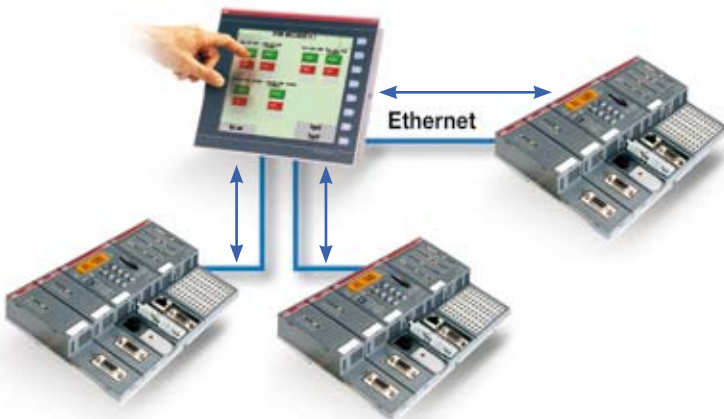


Protect your files and machine configurations using global and object-specific passwords (9 protection levels) to prevent downloading of the application.

Simplified adaptability and connectivity

Connect your HMIs to the various automation equipment:

- via the various **possible protocols** for ABB AC31, series 40&50, series 90, AC500 PLCs and more than 100 leading PLCs on the market, where the display acts as gateway. The multi protocol also allows data to be exchanged between the various controllers.
- via **multi-channel communication** (Connecting a controller to each available port via different protocols, transferring values between drivers via macros, using the values of various controllers in the calculations).
- via the **multiple connection media** (RS232, RS485, RS422 or Ethernet...) increasing connection capacities.



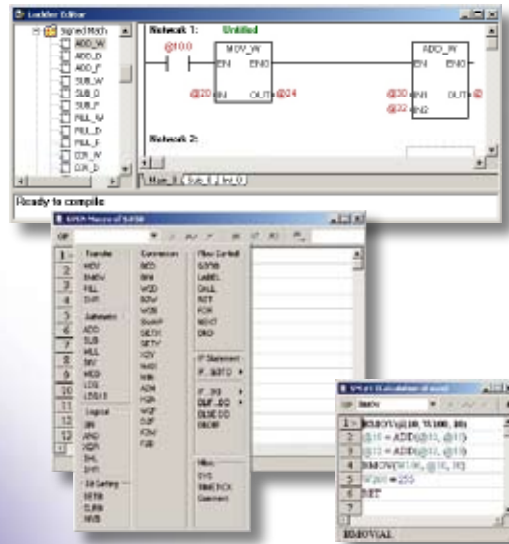
Operator Terminals

Comfort

Simplified creation

Simplify the creation of your projects using:

- the **Macro** and **Ladder** functions, providing you with ready-to-use modules such as arithmetic functions
- quick and easy retrieval of your PLC's variables by **variable import**.

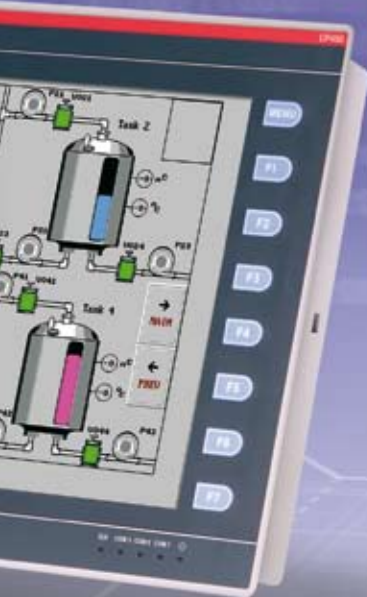


Controller/PLC	
AB DH-485	
AB SLC 5/03, 5/04	
ABB AC31 Series 40,50	
ABB AC31 Series 90	
ABB AC500 PM571	
ABB AC500 PM58X	
ABB AC500 PM59X	
ASCII Device	
Computer (as master)	
Computer (as master) V2	
Computer (as slave)	
Danfoss VLT Series Inverter	
DELTA DVP-ES/SS/EP/EH PLC	
Delta VFD-8 Inverter	
Dupline DKG2	
Elmo SimpleIQ	
Facon FB Series(RS232/RS485)	
Facon FB Series(RS232-RTS)	
Hitachi EC Series	
Hitachi H/EH1 (RS-485)	
Hitachi H/EH1 Series	
Iddec MicroSmart	
Jetter-process-PLC	
Koyo Direct DL Series	
Matsushita FP Series	
Mitsubishi A1S/A2S CPU Port	
Mitsubishi A3N/A1SH CPU Port	
Mitsubishi An/AU Link	
Mitsubishi An/N/S Link	
Mitsubishi FX Series	
Mitsubishi FX2N	
Mitsubishi FX2N-485ADP	
Mitsubishi FX3UC	
Mitsubishi FX3UC-485ADP	
Mitsubishi MELSEC-Q(CPU)	
Mitsubishi MELSEC-Q00(CPU)	
Mitsubishi MELSEC-QnA(LINK)	
ModBus Master	
ModBus RTU Slave (Beijer Addressing)	
ModBus Slave	
ModBus(ASCII) Master	
ModBus(ASCII) Master - V2	
ModBus(ASCII) Slave	
Modicon 984 (RTU; Master)	
Modicon 984 (RTU; Slave)	
Null	
OEMAX NX7 Series	
Omnion C Series	
SAIA PCD1/PCD3	
Samco-e Inverter	
Schneider-Electric Twido	
Shinko DCL Series	
SIDE MIDA 20/200	
Simatic S7-200 (via PPI; 1-to-1)	
Simatic S7-300 (via MPI Port)	
Simatic S7-300 (via PC adapter)	
Taian TP02 Series	
Texmate 320	
Vigor M/VB Series	
VIPA Sys200V MPI	
Yokogawa FA-M3 Series	

La liste des drivers est mise à jour continuellement

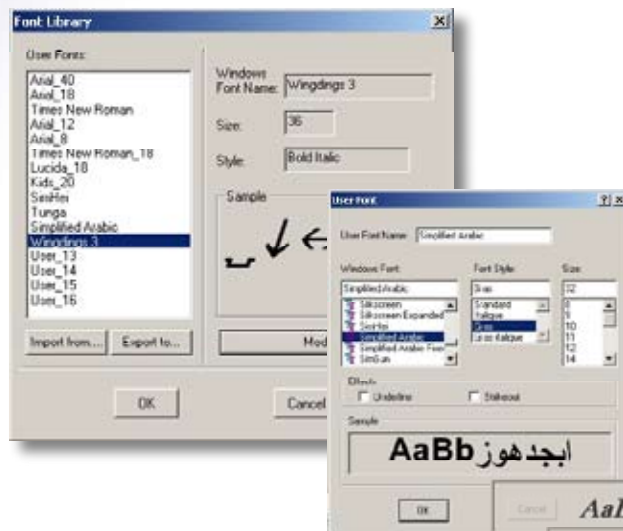
Easy template choice

Satisfy your requirements by choosing the HMI which is most adapted to your needs in terms of dimensions, colours, functions and connection.



Enhanced visual comfort

Embellish your screens by using available or imported **fonts** and by importing **animated Gif images**.



AaBb 微软中文软件

For the entire range:

- 32 bit RISC CPU
- Graphics and text
- Macro and Ladder
- On-line and off-line simulation
- Real time clock
- Password protection
- 4 MB flash memory
- 24 V DC \pm 15% supply voltage
- Ambient temperature: 0 to 50 °C
- IP65 class protection
- Conform to ROHS

Description	Type	Part Number
Programming software	CP400Soft	1SBS260284R1001
RS232 programming cable	TK401	1SBN260216R1001
Programming cable	TK402	1SBN260217R1001
RS232, AC31 communication cable (40&50)	TK403	1SBN260218R1001
RS232, AC31 communication cable series 90	TK404	1SBN260220R1001
RS232, AC500 communication cable	TK405	1SBN260221R1001



	CP410M	CP420B	CP430B	CP430B-ETH	CP430C	CP430C-ETH	CP440C-ETH	CP450T	CP450T-ETH
Part numbers	1SBP260181R1001	1SBP260182R1001	1SBP260183R1001	1SBP260184R1001	1SBP260185R1001	1SBP260186R1001	1SBP260187R1001	1SBP260188R1001	1SBP260189R1001
Monitor type	LCD-STN 16 grey	Touch 16 blue STN	Touch 16 blue, STN		Touch 256 colours, STN		Touch 64K colours, STN	Touch 64K colours, TFT	
Monitor size	3"	4.7"	5.7"		5.7"		7.5"	10.4"	
Resolution (Pixels)	160 x 80	320 x 240	320 x 240		320 x 240		640 x 480	640 x 480	
Brightness (cd/m2)	36	110	110		300		350	350	
Contrast setting	Via VR (variable resistance)	Via touch panel	Via touch panel and VR (variable resistance) at rear				Via touch panel	-	
Type of back-lighting	LED	CCFL	CCFL				CCFL	CCFL	
Duration of back-lighting	75 000 hours	50 000 hours	50 000 hours		75 000 hours		45 000 hours	50 000 hours	
Touch screen (number of times pressed)	> 500 000	> 1 000 000	> 1 000 000				> 1 000 000	> 1 000 000	
Main functions	16 keys (10 of which may be function keys)	-	5 keys + 1 key menu				6 keys + 1 key menu	7 keys + 1 key menu	
Ethernet	-	-	-	•	-	•	•	-	•
Alarm management	-	•	-	•	-	•	•	-	•
Acceptance test management	-	-	-	•	-	•	•	-	•
Data/acceptance tests	-	-	-	•	-	•	•	-	•
Trend curves	-	•	-	•	-	•	•	-	•
Data storage (CF card - compact flash)	-	-	-	•	-	•	•	-	•
Communication interface	1	2	-	•	-	•	•	-	•
USB 2.0	-	-	-	•	-	•	2 Masters + 1 Peripheral	2 Masters + 1 Peripheral	
Printer port	-	-	-	•	-	•	USB	USB	
Consumption	< 330 mA	< 500 mA	< 840 mA		< 840 mA		< 1 A	< 1.25 A	
Dimensions mm L x H x D	173 x 106 x 52	170 x 103 x 45	195 x 145 x 60		195 x 145 x 60		231 x 176 x 47	297 x 222 x 52	
Weight (kg)	0,65	0,47	0,81		0,81		1,20	1,90	



ABB France
Automation Products Division
Export Department
10, rue Ampère Z.I. - B.P. 114
F-69685 Chassieu cedex / France
Tel.: +33 (0)4 7222 1722
Fax: +33 (0)4 7222 1935

ABB STOTZ-KONTAKT GmbH
P.O. Box 101680
D-69006 Heidelberg / Germany
Tel.: +49 (0) 6221 701-00
Fax: +49 (0) 6221 701-1115