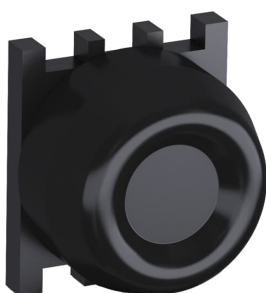


PRODUCT-DETAILS

KP6-40B-02

KP6-40B-02 Heavy Duty Pushbutton



General Information

Extended Product Type	KP6-40B-02
Product ID	1SFA616105R4056
EAN	7320500200520
Catalog Description	KP6-40B-02 Heavy Duty Pushbutton

Long Description	<p>The KP6-40B-02 Heavy Duty Pushbutton is: Heavy duty rubber - Black - Non-illuminated - Black Plastic - 2NC - 2NC - 690 V</p> <p>This Heavy Duty Pushbutton is part of ABB's modular plastic range, the most versatile range with a high level of flexibility and market-leading electrical ratings. Engineered for total reliability, longer lifetime, and highest mechanical durability. Self-cleaning contacts ensure reliable operation without the need for maintenance, increasing uptime. A high degree of protection guarantees reliability in extreme environments. The innovative design simplifies the entire process, from selection to easy and quick, tool-free installation. The perfect solution for every application.</p>
------------------	---

Ordering

Minimum Order Quantity	10 piece
Customs Tariff Number	8536501999

Popular Downloads

Data Sheet, Technical Information	1SFC151007C02_
Instructions and Manuals	1SFC151011M0201

Dimensions	
Product Net Width	0.043 m
Product Net Height	0.043 m
Product Net Depth / Length	0.045 m
Product Net Weight	0.043 kg

Technical	
Ambient Air Temperature	Operation -25 ... +70 °C Storage -40 ... +85 °C
Color	Black
Actuator Type	Heavy duty rubber
Bezel Material	Black Plastic
Illumination	Non-illuminated
Function	Momentary
Number of Auxiliary Contacts NC	2
Degree of Protection	Front IP66 Terminals IP20
Enclosure Type NEMA	Type1 Type3R Type4 Type4X
Pollution Degree	3
Rated Frequency (f)	50 / 60 Hz
Rated Operational Voltage	Maximum 690 V
Power Loss	Maximum 5 W
Mechanical Durability	2 million
Connecting Capacity	Flexible with Ferrule 1 x 0.75...2.5 mm ² Flexible with Ferrule 2 x 0.75...2.5 mm ² Flexible with Insulated Ferrule 1 x 0.75...2.5 mm ² Flexible with Insulated Ferrule 2 x 0.75...2.5 mm ² Flexible 1 x 0.75 ... 2.5 mm ² Flexible 2 x 0.75 ... 2.5 mm ² Solid 1 x 0.75...2.5 mm ² Solid 2 x 0.75...2.5 mm ²
Connection Type	Screw Clamp
Terminal Type	Screw Terminals
Tightening Torque	0.9 N·m
Wire Stripping Length	8 mm

Technical UL/CSA	
Connecting Capacity	1x 18...14 AWG
UL/CSA	2x 18...14 AWG

Environmental	
RoHS Status	Following EU Directive 2011/65/EU and Amendment 2015/863 July 22, 2019
RoHS Date	0626 5
RoHS Information	2CMT2015-005453
WEEE Category	5. Small Equipment (No External Dimension More Than 50 cm)
WEEE B2C / B2B	Business To Business

Certificates and Declarations (Document Number)

CQC Certificate	CQC2002010304007859
Declaration of Conformity - CCC	2020980305001526 2020980305001106
Declaration of Conformity - CE	2CMT2015-005453
Environmental Information	1SFC151001D0201
Instructions and Manuals	1SFC151011M0201
RoHS Information	2CMT2015-005453

Container Information

Package Level 1 Units	bag 1 piece
Package Level 1 Width	0.1 m
Package Level 1 Depth / Length	0.1 m
Package Level 1 Height	0.043 m
Package Level 1 Gross Weight	0.043 kg
Package Level 1 EAN	7320500200520

Classifications

Object Classification Code	S
ETIM 6	EC000221 - Front element for push button
ETIM 7	EC001028 - Push button, complete
ETIM 8	EC001028 - Push button, complete
eClass	V11.0 : 27371228
UNSPSC	39121500
E-Number (Sweden)	3705086

Categories

Low Voltage Products and Systems → Control Products → Pilot Devices → Modular Plastic Range

