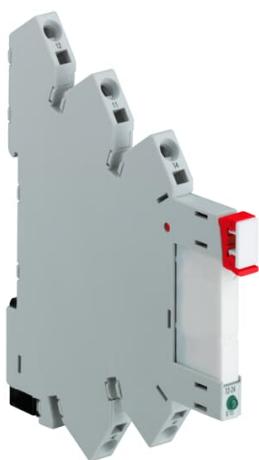


PRODUCT-DETAILS

## CR-S006/024VDC1SZ

CR-S006/024VDC1SZ Socket 1c/o, A1-A2=6-24VDC, 250VAC



### General Information

Extended Product Type	CR-S006/024VDC1SZ
Product ID	1SVR405521R1200
EAN	4013614499197
Catalog Description	CR-S006/024VDC1SZ Socket 1c/o, A1-A2=6-24VDC, 250VAC
Long Description	CR-S006/024VDC1SZ Socket 1c/o, A1-A2=6-24VDC, 250VAC spring terminals

### Ordering

Minimum Order Quantity	10 piece
Customs Tariff Number	85369010

### Popular Downloads

Data Sheet, Technical Information	2CDC117022D0201
Instructions and Manuals	1SVC405650M9010

### Dimensions

Product Net Width	6.2 mm
Product Net Height	76.6 mm
Product Net Depth /	94.7 mm

Length	
Product Net Weight	0.025 kg

## Technical

Function	Accessory for interface relays CR-S
Sub-Function	Socket
Rated Control Supply Voltage (U <sub>s</sub> )	6 ... 24 V DC
Terminal Type	Spring Terminals

## Environmental

Ambient Air Temperature	Operation -40 ... +70 °C Storage 0 ... +40 °C
RoHS Status	Following EU Directive 2011/65/EU

## Technical UL/CSA

Connecting Capacity UL/CSA	Flexible 14 AWG Rigid 14 AWG
Tightening Torque UL/CSA	4.42 in-lb

## Certificates and Declarations (Document Number)

CSA Certificate	CSA_262671_2785566
cURus Certificate	cURus508_E244328
Declaration of Conformity - CE	1SVD982017-0001
EAC Certificate	EAC_RU_C-DE.ME77.B.00443-19
Environmental Information	1SAA981009-2403
Instructions and Manuals	1SVC405650M9010
RoHS Information	1SVD982017-0001

## Container Information

Package Level 1 Units	10 piece
Package Level 1 Width	93 mm
Package Level 1 Height	81 mm
Package Level 1 Depth / Length	66 mm
Package Level 1 Gross Weight	0.26 kg
Package Level 1 EAN	4013614486326

## Classifications

Object Classification Code	K
ETIM 4	EC001456 - Relay socket
ETIM 5	EC001456 - Relay socket
ETIM 6	EC001456 - Relay socket
ETIM 7	EC001456 - Relay socket
eClass	7.0 27371603

UNSPSC	39122335
E-Number (Finland)	2712361
E-Number (Sweden)	4001391

---

## Categories

---

Low Voltage Products and Systems → Control Products → Electronic Relays and Controls → Interface Relays and Optocouplers

