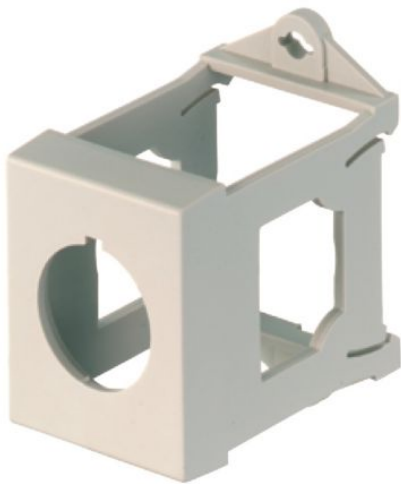


# Specifications



## Eaton 216400

Eaton Moeller® series M22 IVS mounting rail adapter

### General specifications

<b>PRODUCT NAME</b>	Eaton Moeller® series M22 Accessory Top-hat rail adapter
<b>CATALOG NUMBER</b>	216400
<b>MODEL CODE</b>	M22-IVS
<b>EAN</b>	4015082164003
<b>PRODUCT LENGTH/DEPTH</b>	35 mm
<b>PRODUCT HEIGHT</b>	56 mm
<b>PRODUCT WIDTH</b>	41 mm
<b>PRODUCT WEIGHT</b>	0.017 kg
<b>COMPLIANCES</b>	CE Marked
<b>CERTIFICATIONS</b>	EN 60947-5 CSA Std. C22.2 No. 94-91 CSA Std. C22.2 No. 14-05 IEC 60947-5 UL 508 UL Category Control No.: NKCR IEC/EN 60947-5 CSA-C22.2 No. 94-91 CE UL File No.: E29184 CSA-C22.2 No. 14-05 CSA UL CSA Class No.: 3211-03 CSA File No.: 012528
<b>GLOBAL CATALOG</b>	216400

## Product specifications

<b>ACCESSORY/SPARE PART TYPE</b>	Accessory
<b>10.10 TEMPERATURE RISE</b>	Not applicable.
<b>10.11 SHORT-CIRCUIT RATING</b>	Is the panel builder's responsibility. The specifications for the switchgear must be observed.
<b>10.12 ELECTROMAGNETIC COMPATIBILITY</b>	Is the panel builder's responsibility. The specifications for the switchgear must be observed.
<b>10.13 MECHANICAL FUNCTION</b>	The device meets the requirements, provided the information in the instruction leaflet (IL) is observed.
<b>10.2.2 CORROSION RESISTANCE</b>	Meets the product standard's requirements.
<b>10.2.3.1 VERIFICATION OF THERMAL STABILITY OF ENCLOSURES</b>	Meets the product standard's requirements.
<b>10.2.3.2 VERIFICATION OF RESISTANCE OF INSULATING MATERIALS TO NORMAL HEAT</b>	Meets the product standard's requirements.
<b>10.2.3.3 RESIST. OF INSUL. MAT. TO ABNORMAL HEAT/FIRE BY INTERNAL ELECT. EFFECTS</b>	Meets the product standard's requirements.
<b>10.2.4 RESISTANCE TO ULTRA-VIOLET (UV) RADIATION</b>	Please enquire
<b>10.2.5 LIFTING</b>	Does not apply, since the entire switchgear needs to be evaluated.
<b>10.2.6 MECHANICAL IMPACT</b>	Does not apply, since the entire switchgear needs to be evaluated.
<b>10.2.7 INSCRIPTIONS</b>	Meets the product standard's requirements.
<b>10.3 DEGREE OF PROTECTION OF ASSEMBLIES</b>	Does not apply, since the entire switchgear needs to be evaluated.
<b>10.4 CLEARANCES AND CREEPAGE DISTANCES</b>	Meets the product standard's requirements.
<b>10.5 PROTECTION</b>	Does not apply, since the

## Resources

### CATALOGS

[eaton-pushbuttons-signal-towers-sensors-assortment-overview-catalog-ca047003en-en-us.pdf](#)

[Flip catalog - Product Range Catalog - Command and indication](#)

[eaton-rmq-titan-brochure-br047004en-en-us.pdf](#)

### DRAWINGS

[eaton-operating-adapter-m22-top-hat-rail-adapter-dimensions.eps](#)

### ECAD MODEL

[DA-CE-ETN.M22-IVS](#)

### FLYERS

[eaton-rmq-titan-selection-aid-brochure-fl047002-en-us.pdf](#)

### INSTALLATION INSTRUCTIONS

[IL04716002Z](#)

### INSTALLATION VIDEOS

[RMQ Flat Design](#)

### MCAD MODEL

[DA-CS-adapter\\_ivs](#)

[DA-CD-adapter\\_ivs](#)

### MULTIMEDIA

[MCI Multicolor Light Indicator M22 with SmartWire-DT](#)

[MCI MultiColor Light Indicator RMQ compact solution](#)

[RMQ small E-Stop emergency-stop button](#)

[easyE4 SmartWire-DT module with Remote Touch Display and RMQ multi color indicator](#)

[eaton-control circuit-devices rmq-titan-fl144090en-en-us.pdf](#)

[eaton-rmq-flat-enclosure-flyer-fl047003en-en-us.pdf](#)

### SALES NOTES

[eaton-rmq-small-e-stop-flyer-fl047006en-en-us.pdf](#)

[eaton-rmq-mci-multi-color-light-indicator-flyer-fl047005en-en-us.pdf](#)

<b>AGAINST ELECTRIC SHOCK</b>	entire switchgear needs to be evaluated.
<b>10.6 INCORPORATION OF SWITCHING DEVICES AND COMPONENTS</b>	Does not apply, since the entire switchgear needs to be evaluated.
<b>10.7 INTERNAL ELECTRICAL CIRCUITS AND CONNECTIONS</b>	Is the panel builder's responsibility.
<b>10.8 CONNECTIONS FOR EXTERNAL CONDUCTORS</b>	Is the panel builder's responsibility.
<b>10.9.2 POWER-FREQUENCY ELECTRIC STRENGTH</b>	Is the panel builder's responsibility.
<b>10.9.3 IMPULSE WITHSTAND VOLTAGE</b>	Is the panel builder's responsibility.
<b>10.9.4 TESTING OF ENCLOSURES MADE OF INSULATING MATERIAL</b>	Is the panel builder's responsibility.
<b>CONNECTION TO SMARTWIRE-DT</b>	No
<b>ELECTRICAL ACCESSORY TYPE</b>	Other
<b>MECHANICAL ACCESSORY TYPE</b>	Other
<b>AMBIENT OPERATING TEMPERATURE - MAX</b>	70 °C
<b>AMBIENT OPERATING TEMPERATURE - MIN</b>	-25 °C
<b>EQUIPMENT HEAT DISSIPATION, CURRENT-DEPENDENT PVID</b>	0 W
<b>FORCE FOR POSITIVE OPENING - MIN</b>	0 N
<b>HEAT DISSIPATION CAPACITY PDISS</b>	0 W
<b>HEAT DISSIPATION PER POLE, CURRENT-DEPENDENT PVID</b>	0 W
<b>RATED OPERATIONAL CURRENT FOR SPECIFIED HEAT DISSIPATION (IN)</b>	0 A
<b>STATIC HEAT DISSIPATION, NON-CURRENT-DEPENDENT PVS</b>	0 W

PROJECT NAME:
PROJECT NUMBER:
PREPARED BY:
DATE:



**Eaton Corporation plc**  
Eaton House  
30 Pembroke Road  
Dublin 4, Ireland  
Eaton.com

© 2025 Eaton. All Rights Reserved.

Follow us on social media to get the latest product and support information.

