

# ME 67,5 UT TBUS KMGY - Mounting base housing



2200544

<https://www.phoenixcontact.com/pc/products/2200544>

Please be informed that the data shown in this PDF document is generated from our online catalog. Please find the complete data in the user documentation. Our general terms of use for downloads are valid.



DIN rail housing, Lower housing part with metal foot catch, tall design, with vents, width: 67.8 mm, height: 99 mm, depth: 107.3 mm, color: light grey (similar RAL 7035), cross connection: DIN rail connector (optional), number of positions cross connector: 5

## Your advantages

- Tool-free mounting
- Available in overall widths from 12.5 mm ... 90 mm, modular extension is possible
- Flammability rating V0 in accordance with UL 94
- Variety of connection technology
- Can be mounted on the DIN rail
- With integrated or DIN-rail-mountable bus connector as an option

## Commercial data

|                                      |                                |
|--------------------------------------|--------------------------------|
| Item number                          | 2200544                        |
| Packing unit                         | 10 pc                          |
| Minimum order quantity               | 1 pc                           |
| Note                                 | Made to order (non-returnable) |
| Product key                          | ACHAAC                         |
| Catalog page                         | Page 669 (C-1-2013)            |
| GTIN                                 | 4046356608091                  |
| Weight per piece (including packing) | 73.56 g                        |
| Weight per piece (excluding packing) | 70 g                           |
| Customs tariff number                | 85389099                       |
| Country of origin                    | DE                             |

# ME 67,5 UT TBUS KMGY - Mounting base housing



2200544

<https://www.phoenixcontact.com/pc/products/2200544>

## Technical data

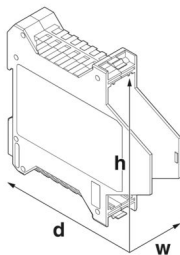
### Notes

|                |   |
|----------------|---|
| Assembly note  | Refer to the data sheet for the range in the download area.           |
| Recommendation | Material of contact pads for bus connector, galvanic gold (hard gold) |

### Product properties

|                              |  |
|------------------------------|--|
| Product type                 | Enclosure bottom part  |
| Housing type                 | DIN rail housing   |
| Housing series               | ME   |
| Product family               | ME 67,5..  |
| Type                         | Lower housing parts with vents, housing cover necessary to complete the module |
| Max. number of positions     | 0)   |
| Type                         | Lower housing part with metal foot catch, tall design                          |
| Ventilation openings present | yes  |

### Dimensions

|  |  |
|--|--|
| Dimensional drawing  |  |
| Width  | 67.8 mm  |
| Height   | 99 mm  |
| Depth  | 107.3 mm   |
| Depth from top edge of DIN rail                                | 100.7 mm   |
| Depth from top edge of DIN rail to support point on upper part | 68.5 mm  |

### PCB design

|               |                   |
|---------------|-------------------|
| PCB thickness | 1.4 mm ... 1.8 mm |
|---------------|-------------------|

### Material specifications

|  |                       |
|--|-----------------------|
| Color (Housing)                        | light grey (RAL 7035) |
| Flammability rating according to UL 94 | V0                    |
| CTI according to IEC 60112             | 600                   |
| Housing material                       | Polyamide             |
| Surface characteristics                | untreated             |

### Environmental and real-life conditions

# ME 67,5 UT TBUS KMGY - Mounting base housing



2200544

<https://www.phoenixcontact.com/pc/products/2200544>

## Power dissipation single housing for 20 °C

|                     |          |
|---------------------|----------|
| Ambient temperature | 20 °C    |
| Reduction factor    | 1        |
| Mounting position   | vertical |
| Power dissipation   | 9.1 W    |

## Power dissipation single housing for 30 °C

|                     |          |
|---------------------|----------|
| Ambient temperature | 30 °C    |
| Reduction factor    | 0.91     |
| Mounting position   | vertical |
| Power dissipation   | 8.3 W    |

## Power dissipation single housing for 40 °C

|                     |          |
|---------------------|----------|
| Ambient temperature | 40 °C    |
| Reduction factor    | 0.81     |
| Mounting position   | vertical |
| Power dissipation   | 7.4 W    |

## Power dissipation single housing for 50 °C

|                     |          |
|---------------------|----------|
| Ambient temperature | 50 °C    |
| Reduction factor    | 0.7      |
| Mounting position   | vertical |
| Power dissipation   | 6.4 W    |

## Power dissipation single housing for 60 °C

|                     |          |
|---------------------|----------|
| Ambient temperature | 60 °C    |
| Reduction factor    | 0.57     |
| Mounting position   | vertical |
| Power dissipation   | 5.2 W    |

## Power dissipation single housing for 70 °C

|                     |          |
|---------------------|----------|
| Ambient temperature | 70 °C    |
| Reduction factor    | 0.49     |
| Mounting position   | vertical |
| Power dissipation   | 4.6 W    |

## Vibration test

|                        |                             |
|------------------------|-----------------------------|
| Specification          | IEC 60068-2-6:2007-12       |
| Frequency              | 10 - 150 - 10 Hz            |
| Sweep speed            | 1 octave/min                |
| Amplitude              | 0.15 mm (10 Hz ... 58.1 Hz) |
| Acceleration           | 2g (58.1 Hz ... 150 Hz)     |
| Test duration per axis | 2.5 h                       |
| Test directions        | X-, Y- and Z-axis           |

## Glow-wire test

|               |                        |
|---------------|------------------------|
| Specification | IEC 60695-2-11:2014-02 |
|---------------|------------------------|

# ME 67,5 UT TBUS KMGY - Mounting base housing



2200544

<https://www.phoenixcontact.com/pc/products/2200544>

|                  |        |
|------------------|--------|
| Temperature      | 850 °C |
| Time of exposure | 30 s   |

## Thermal stability / ball thrust test

|               |                        |
|---------------|------------------------|
| Specification | IEC 60695-10-2:2014-02 |
| Temperature   | 125 °C                 |
| Test duration | 1 h                    |
| Force         | 20 N                   |

## Mechanical strength / tumbling barrel

|                |                     |
|----------------|---------------------|
| Specification  | IEC 60998-1:2002-12 |
| Height of fall | 50 cm               |
| Frequency      | 10                  |

## Shocks

|                                |                                   |
|--------------------------------|-----------------------------------|
| Specification                  | IEC 60068-2-27:2008-02            |
| Pulse shape                    | Half-sine                         |
| Acceleration                   | 15g                               |
| Shock duration                 | 11 ms                             |
| Number of shocks per direction | 3                                 |
| Test directions                | X-, Y- and Z-axis (pos. and neg.) |

## Degree of protection (IP code)

|               |   |
|---------------|---|
| Specification | IEC 60529:1989-11 + AMD 1:1999-11 + AMD 2:2013-08 |
|---------------|---|

## Ambient conditions

|   |  |
|---|--|
| Max. IP code to attain                  | IP20   |
| Ambient temperature (operation)         | -40 °C ... 105 °C (depending on power dissipation) |
| Ambient temperature (storage/transport) | -40 °C ... 55 °C                                   |
| Ambient temperature (assembly)          | -5 °C ... 100 °C                                   |
| Relative humidity (storage/transport)   | 80 %   |

## PCB data

|                       |   |
|-----------------------|---|
| Number of PCB holders | 3   |
| Type of PCB mount     | Insertion (optional latching by PCB stop) |
| Thickness of the PCB  | 1.4 mm ... 1.8 mm                         |

## Mounting

|                   |                                |
|-------------------|--------------------------------|
| Mounting type     | DIN rail mounting              |
| Mounting position | Vertical (horizontal DIN rail) |

## Packaging specifications

|                      |                     |
|----------------------|---------------------|
| Type of packaging    | packed in cardboard |
| Outer packaging type | Carton              |

# ME 67,5 UT TBUS KMGY - Mounting base housing

2200544

<https://www.phoenixcontact.com/pc/products/2200544>



## Drawings

Dimensional drawing



Schematic figure for illustrating the item dimensions. The figure is not of the desired product. For further details, refer to the product drawings in the "Downloads" tab.

# ME 67,5 UT TBUS KMGY - Mounting base housing



2200544

<https://www.phoenixcontact.com/pc/products/2200544>

## Approvals

🔗 To download certificates, visit the product detail page: <https://www.phoenixcontact.com/pc/products/2200544>



**UL Recognized**

Approval ID: FILE E 240868

# ME 67,5 UT TBUS KMGY - Mounting base housing



2200544

<https://www.phoenixcontact.com/pc/products/2200544>

## Classifications

### ECLASS

|             |          |
|-------------|----------|
| ECLASS-11.0 | 27182702 |
| ECLASS-13.0 | 27190601 |

### ETIM

|          |          |
|----------|----------|
| ETIM 9.0 | EC001031 |
|----------|----------|

### UNSPSC

|             |          |
|-------------|----------|
| UNSPSC 21.0 | 31261500 |
|-------------|----------|

# ME 67,5 UT TBUS KMGY - Mounting base housing



2200544

<https://www.phoenixcontact.com/pc/products/2200544>

## Environmental product compliance

|   |  |
|---|--|
| EU RoHS                                 |  |
| Fulfills EU RoHS substance requirements | Yes, No exemptions                       |
| China RoHS                              |  |
| Environment friendly use period (EFUP)  | EFUP-E                                   |
|   | No hazardous substances above the limits |
| EU REACH SVHC                           |  |
| REACH candidate substance (CAS No.)     | No substance above 0.1 wt%               |



# ME 67,5 UT TBUS KMGY - Mounting base housing



2200544

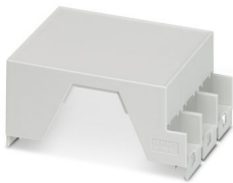
<https://www.phoenixcontact.com/pc/products/2200544>

## Mandatory accessories

### ME 67,5 OT-1MSTBO KMGY - Upper housing part

2200522

<https://www.phoenixcontact.com/pc/products/2200522>



DIN rail housing, Upper housing part for connectors with header, width: 67.5 mm, height: 99 mm, depth: 45.85 mm, color: light grey (similar RAL 7035)

---

### ME 45 OT-MSTBO KMGY - Upper housing part

2854429

<https://www.phoenixcontact.com/pc/products/2854429>



DIN rail housing, Upper housing part for connectors with header, width: 45.2 mm, height: 99 mm, depth: 45.85 mm, color: light grey (similar RAL 7035)

# ME 67,5 UT TBUS KMGY - Mounting base housing



2200544

<https://www.phoenixcontact.com/pc/products/2200544>

## ME 45 OT-MKDSO KMGY - Upper housing part

2853255

<https://www.phoenixcontact.com/pc/products/2853255>



DIN rail housing, Upper housing part for PCB terminal blocks with screw connection, width: 45.2 mm, height: 99 mm, depth: 45.85 mm, color: light grey (similar RAL 7035)

---

## ME 45 OT-1MSTBO KMGY - Upper housing part

2709299

<https://www.phoenixcontact.com/pc/products/2709299>



DIN rail housing, Upper housing part for connectors with header, width: 45.2 mm, height: 99 mm, depth: 45.85 mm, color: light grey (similar RAL 7035)

# ME 67,5 UT TBUS KMGY - Mounting base housing



2200544

<https://www.phoenixcontact.com/pc/products/2200544>

## ME 45 OT-FKDSO KMGY - Upper housing part

2200327

<https://www.phoenixcontact.com/pc/products/2200327>



DIN rail housing, Upper housing part for PCB terminal blocks with Push-in spring connection, width: 45.2 mm, height: 99 mm, depth: 45.85 mm, color: light grey (similar RAL 7035)

---

## ME 45 OT-MSTBO SET KMGY - Upper housing part

2869032

<https://www.phoenixcontact.com/pc/products/2869032>



DIN rail housing, Set comprised of upper housing part, 8 PCB headers (4-pos.), and 8 PCB terminal blocks with screw connection (4-pos.), width: 45.2 mm, height: 99 mm, depth: 45.85 mm, color: light grey (similar RAL 7035)

# ME 67,5 UT TBUS KMGY - Mounting base housing



2200544

<https://www.phoenixcontact.com/pc/products/2200544>

## ME 22,5 OT-MSTBO KMGY - Upper housing part

2907761

<https://www.phoenixcontact.com/pc/products/2907761>

DIN rail housing, Upper housing part for connectors with header, width: 22.6 mm, height: 99 mm, depth: 45.85 mm, color: light grey (similar RAL 7035)



---

## ME 22,5 OT-FKDSO KMGY - Upper housing part

2200323

<https://www.phoenixcontact.com/pc/products/2200323>

DIN rail housing, Upper housing part for PCB terminal blocks with Push-in spring connection, width: 22.6 mm, height: 99 mm, depth: 45.85 mm, color: light grey (similar RAL 7035)



# ME 67,5 UT TBUS KMGY - Mounting base housing



2200544

<https://www.phoenixcontact.com/pc/products/2200544>

## ME 22,5 OT-MKDSO KMGY - Upper housing part

2908469

<https://www.phoenixcontact.com/pc/products/2908469>



DIN rail housing, Upper housing part for PCB terminal blocks with screw connection, width: 22.6 mm, height: 99 mm, depth: 45.85 mm, color: light grey (similar RAL 7035)

---

## ME 22,5 OTU-MKDSO KMGY - Upper housing part

2278953

<https://www.phoenixcontact.com/pc/products/2278953>



DIN rail housing, Upper housing part for PCB terminal blocks with screw connection, width: 22.6 mm, height: 99 mm, depth: 45.85 mm, color: light grey (similar RAL 7035)

# ME 67,5 UT TBUS KMGY - Mounting base housing



2200544

<https://www.phoenixcontact.com/pc/products/2200544>

## ME 22,5 OT-1MSTBO KMGY - Upper housing part

2914877

<https://www.phoenixcontact.com/pc/products/2914877>

DIN rail housing, Upper housing part for connectors with header, width: 22.6 mm, height: 99 mm, depth: 45.85 mm, color: light grey (similar RAL 7035)



---

## ME 22,5 OT-3MSTBO KMGY - Upper housing part

2914880

<https://www.phoenixcontact.com/pc/products/2914880>

DIN rail housing, Upper housing part for connectors with header, width: 22.6 mm, height: 102 mm, depth: 60.15 mm, color: light grey (similar RAL 7035)



# ME 67,5 UT TBUS KMGY - Mounting base housing



2200544

<https://www.phoenixcontact.com/pc/products/2200544>

## ME 22,5 OTP-MSTBO PS KMGY - Upper housing part

2279282

<https://www.phoenixcontact.com/pc/products/2279282>



DIN rail housing, Upper housing part for connectors with header, width: 22.6 mm, height: 99 mm, depth: 45.85 mm, color: light grey (similar RAL 7035)

---

## ME 22,5 OT-MKDSO SET KMGY - Upper housing part

2853734

<https://www.phoenixcontact.com/pc/products/2853734>



DIN rail housing, Set comprised of upper housing part and 4 PCB terminal blocks (4-pos.) with screw connection, width: 22.6 mm, height: 99 mm, depth: 45.85 mm, color: light grey (similar RAL 7035)

# ME 67,5 UT TBUS KMGY - Mounting base housing



2200544

<https://www.phoenixcontact.com/pc/products/2200544>

## ME 22,5 OT-MSTBO KMGY VPE200 - Upper housing part

2896801

<https://www.phoenixcontact.com/pc/products/2896801>

DIN rail housing, Upper housing part for connectors with header, width: 22.6 mm, height: 99 mm, depth: 45.85 mm, color: light grey (similar RAL 7035)



---

## ME 22,5 OT-MSTBO SET KMGY - Upper housing part

2709244

<https://www.phoenixcontact.com/pc/products/2709244>

DIN rail housing, Set comprised of upper housing part, 4 PCB headers (4-pos.), and 4 PCB terminal blocks with screw connection (4-pos.), width: 22.6 mm, height: 99 mm, depth: 45.85 mm, color: light grey (similar RAL 7035)





# ME 67,5 UT TBUS KMGY - Mounting base housing



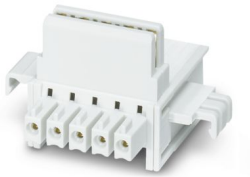
2200544

<https://www.phoenixcontact.com/pc/products/2200544>

## ME 22,5 TBUS 1,5/ 5-ST-3,81 KMGY - DIN rail bus connectors

2713722

<https://www.phoenixcontact.com/pc/products/2713722>



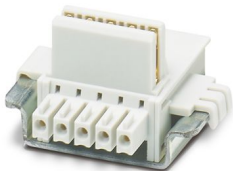
DIN rail connector, color: light grey, nominal current: 8 A (parallel contacts), rated voltage (III/2): 125 V, contact surface: Gold, number of positions: 5, product range: TBUS5-22,5..., pitch: 3.81 mm, mounting: DIN rail mounting, locking: without, mounting: without, type of packaging: packed in cardboard, Item with gold-plated contacts, bus connectors for connecting with electronics housings, 5 parallel contacts

---

## ME 22,5 TBUS 1,5/4P1S KMGY - DIN rail bus connectors

2201732

<https://www.phoenixcontact.com/pc/products/2201732>



DIN rail connector, color: light grey, nominal current: 8 A, 8 A (parallel contacts) (Serial contacts), rated voltage (III/2): 50 V, number of positions: 5, product range: TBUS5-22,5..., pitch: 3.81 mm, mounting: DIN rail mounting, locking: without, mounting: without, Item with gold-plated contacts, bus connectors for connecting with electronics housings, 4 parallel contacts/1 serial contact

# ME 67,5 UT TBUS KMGY - Mounting base housing



2200544

<https://www.phoenixcontact.com/pc/products/2200544>

## ME 22,5 TBUS ADAPTER KMGY - DIN rail bus connectors

2201756

<https://www.phoenixcontact.com/pc/products/2201756>

DIN rail bus adapter for ME and ME-MAX, design width: 22.5 mm, 5 parallel positions, color: light gray (similar to RAL 7035)



---

## Accessories

### ME LPZS - PCB stop

2906911

<https://www.phoenixcontact.com/pc/products/2906911>

DIN rail housing, after approx. 4 cm, the ME LPZS PCB pull-out stop prevents the PCB from being removed completely and locks the PCB in place



## ME 67,5 UT TBUS KMGY - Mounting base housing

2200544

<https://www.phoenixcontact.com/pc/products/2200544>



### ME MF 17,5 - Base latch

2908281

<https://www.phoenixcontact.com/pc/products/2908281>

Metal foot catch with spring, for intermediate elements.



---

### ME-SAS - Shield connection clamp

2853899

<https://www.phoenixcontact.com/pc/products/2853899>

Shield connection clamp for terminal points starting from 2.5 mm<sup>2</sup>



# ME 67,5 UT TBUS KMGY - Mounting base housing



2200544

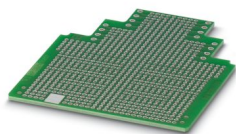
<https://www.phoenixcontact.com/pc/products/2200544>

## ME LP - PCB

2906908

<https://www.phoenixcontact.com/pc/products/2906908>

PCB, for custom fitting, with contact to DIN rail (EN 60715)



## EML (44X72)R-ME - Label for ME ... UT ... TBUS ... housing

0828143

<https://www.phoenixcontact.com/pc/products/0828143>



Label for ME ... UT ... TBUS ... housing, Roll, white, unlabeled, can be labeled with: THERMOMARK ROLLMASTER 300/600, THERMOMARK X1.2, THERMOMARK ROLL X1, THERMOMARK ROLL 2.0, THERMOMARK ROLL, mounting type: adhesive, lettering field size: 44 x 72 mm, Number of individual labels: 200

Phoenix Contact 2024 © - all rights reserved  
<https://www.phoenixcontact.com>

PHOENIX CONTACT GmbH & Co. KG  
Flachsmarktstraße 8  
D-32825 Blomberg  
+49 (0) 5235-3 00  
[info@phoenixcontact.com](mailto:info@phoenixcontact.com)