

Please be informed that the data shown in this PDF document is generated from our online catalog. Please find the complete data in the user documentation. Our general terms of use for downloads are valid.



Complete housing for PCBs, fixed to the corner inlays, includes housing half shells, side panels closed, corner inlays with PCB attachment, screws for housing and PCB attachment, light gray housing with turquoise blue corner inlays

Your advantages

- High degree of application flexibility, thanks to the modular housing design
- Flexible PCB attachment, adapts to virtually all form factors
- Practical customization options
- Reduced logistics outlay, thanks to components which are compatible with one another

Commercial data

| | |
|--------------------------------------|---------------|
| Item number | 2203450 |
| Packing unit | 1 pc |
| Minimum order quantity | 1 pc |
| Sales key | ACFCAA |
| Product key | ACFCAA |
| GTIN | 4055626403373 |
| Weight per piece (including packing) | 414,433 g |
| Weight per piece (excluding packing) | 414 g |
| Customs tariff number | 84879090 |
| Country of origin | DE |

UCS 145-125-H-CCD 7035 - Universal housings



2203450

<https://www.phoenixcontact.com/be/products/2203450>

Technical data

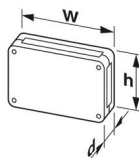
Notes

| | |
|---------|---|
| General | The housing can be opened a maximum of 10 times. |
| General | Attach the adhesive pads: Make sure that the surface of the housing is clean, dry, and free of grease. Temperature range: +18°C ... +30°C / Closing pressure force: 60 N / Closing pressure time: 3 s |

Product properties

| | |
|------------------------------|--------------------|
| Product type | Complete housing |
| Product family | UCS 145-125-H |
| Type | Tall design (CCD) |
| Housing type | Universal housings |
| Ventilation openings present | no |
| Housing series | UCS |

Dimensions

| | |
|---------------------|--|
| Dimensional drawing |  |
| Width | 145 mm |
| Height | 125 mm |
| Depth | 67 mm |
| Dimensions | 120 mm x 100 mm (Maximum circuit board dimensions) |

PCB design

| | |
|---------------|-----------------|
| PCB thickness | 0.8 mm ... 3 mm |
|---------------|-----------------|

Material specifications

| | |
|--|----------------------------|
| Color (Housing) | light grey (RAL 7035) |
| Color (Corner inlay) | turquoise green (RAL 5018) |
| Flammability rating according to UL 94 | V0 |
| CTI according to IEC 60112 | 225 |
| Insulating material | PC |
| Surface characteristics | untreated |
| Housing material | PC |

Environmental and real-life conditions

Power dissipation single housing for 20 °C

| | |
|---------------------|-------|
| Ambient temperature | 20 °C |
| Reduction factor | 1 |

UCS 145-125-H-CCD 7035 - Universal housings



2203450

<https://www.phoenixcontact.com/be/products/2203450>

| | |
|-------------------|----------|
| Mounting position | vertical |
| Power dissipation | 13.5 W |

Power dissipation single housing for 30 °C

| | |
|---------------------|----------|
| Ambient temperature | 30 °C |
| Reduction factor | 0.84 |
| Mounting position | vertical |
| Power dissipation | 11.3 W |

Power dissipation single housing for 40 °C

| | |
|---------------------|----------|
| Ambient temperature | 40 °C |
| Reduction factor | 0.66 |
| Mounting position | vertical |
| Power dissipation | 9 W |

Power dissipation single housing for 50 °C

| | |
|---------------------|----------|
| Ambient temperature | 50 °C |
| Reduction factor | 0.54 |
| Mounting position | vertical |
| Power dissipation | 7.3 W |

Power dissipation single housing for 60 °C

| | |
|---------------------|----------|
| Ambient temperature | 60 °C |
| Reduction factor | 0.4 |
| Mounting position | vertical |
| Power dissipation | 5.5 W |

Vibration test

| | |
|------------------------|-----------------------------|
| Specification | IEC 60068-2-6:2007-12 |
| Frequency | 10 - 150 - 10 Hz |
| Sweep speed | 1 octave/min |
| Amplitude | 0.15 mm (10 Hz ... 58.1 Hz) |
| Acceleration | 2g (58.1 Hz ... 150 Hz) |
| Test duration per axis | 2.5 h |
| Test directions | X-, Y- and Z-axis |

Glow-wire test

| | |
|------------------|------------------------|
| Specification | IEC 60695-2-11:2014-02 |
| Temperature | 850 °C |
| Time of exposure | 30 s |

Thermal stability / ball thrust test

| | |
|---------------|------------------------|
| Specification | IEC 60695-10-2:2014-02 |
| Temperature | 125 °C |
| Test duration | 1 h |
| Force | 20 N |

Mechanical strength / tumbling barrel

UCS 145-125-H-CCD 7035 - Universal housings



2203450

<https://www.phoenixcontact.com/be/products/2203450>

| | |
|----------------|------------------------|
| Specification | IEC 60068-2-31:2008-05 |
| Height of fall | 50 cm |
| Frequency | 50 |

Shocks

| | |
|--------------------------------|-----------------------------------|
| Specification | IEC 60068-2-27:2008-02 |
| Pulse shape | Half-sine |
| Acceleration | 15g |
| Shock duration | 11 ms |
| Number of shocks per direction | 3 |
| Test directions | X-, Y- and Z-axis (pos. and neg.) |

Test for substances that would hinder coating with paint or varnish

| | |
|---------------|----------------------|
| Specification | VW PV 3.10.7:2005-02 |
| Result | Test passed |

Degree of protection (IP code)

| | |
|---------------------------------------|---|
| Specification | IEC 60529:1989-11 + AMD 1:1999-11 + AMD 2:2013-08 |
| Result, degree of protection, IP code | IP40 |

Ambient conditions

| | |
|---|--|
| Max. IP code to attain | IP40 |
| Ambient temperature (operation) | -40 °C ... 105 °C (depending on power dissipation) |
| Ambient temperature (storage/transport) | -40 °C ... 55 °C |
| Ambient temperature (assembly) | -5 °C ... 100 °C |
| Relative humidity (storage/transport) | 80 % |

PCB data

| | |
|-----------------------|---|
| Number of PCB holders | 1 |
| Type of PCB mount | Bolt mounting |
| Total PCB surface | 12000 mm² |
| Thickness of the PCB | 0.8 mm ... 3 mm |
| Note on PCB holders | This product is prepared for a printed-circuit board. Additional printed-circuit boards can be mounted using adhesive pads (accessories). |

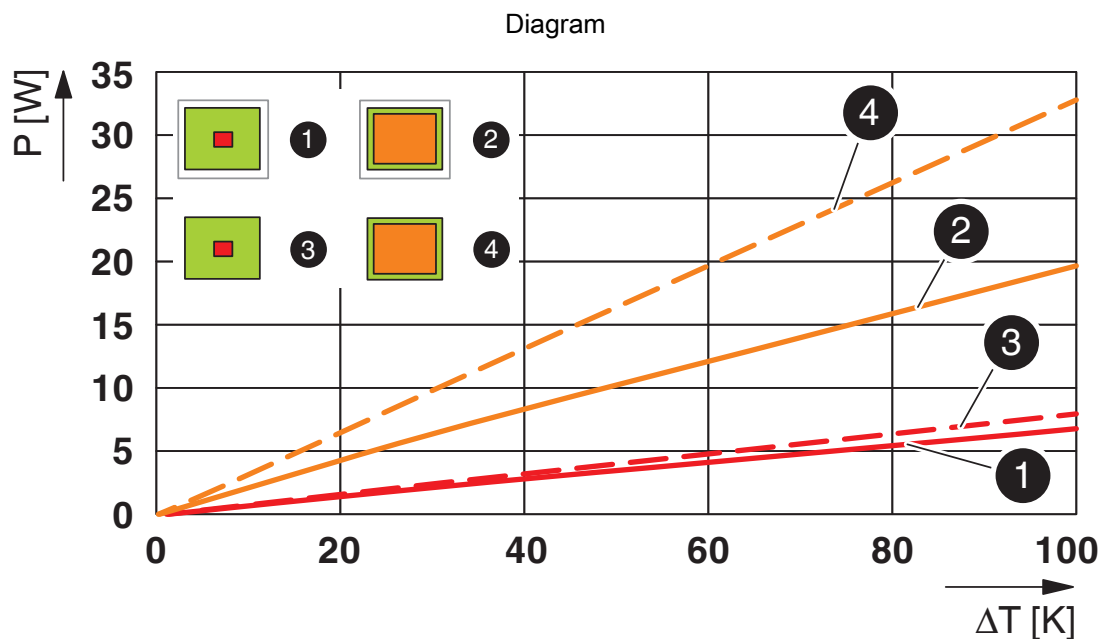
Mounting

| | |
|---------------------------|---|
| Mounting type | Screw mounting |
| Mounting position | any |
| Tightening torque / speed | Screw connection between housing halves: 1.2 Nm-1.4 Nm / 500 rpm-1000 rpm Mounting of PCB on corner feeder: 0.4 Nm-0.5 Nm / 500 rpm-1000 rpm |

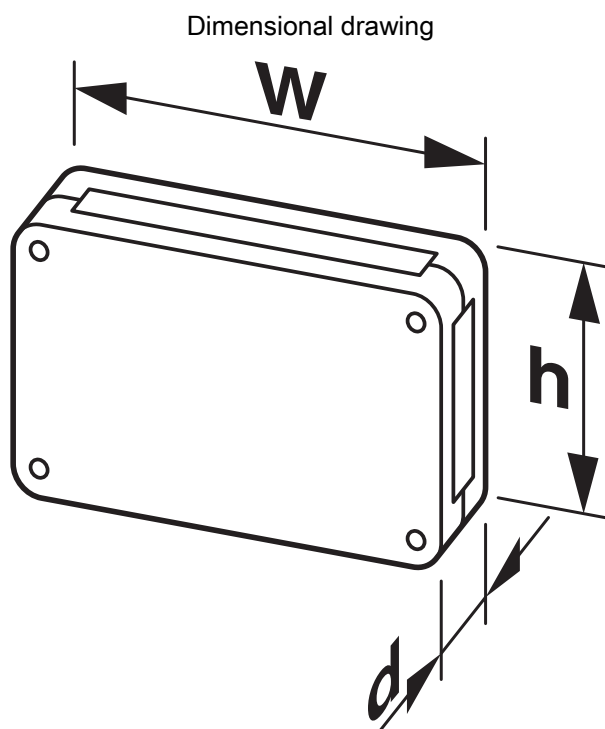
Packaging specifications

| | |
|-------------------|---------------|
| Type of packaging | Box packaging |
|-------------------|---------------|

Drawings



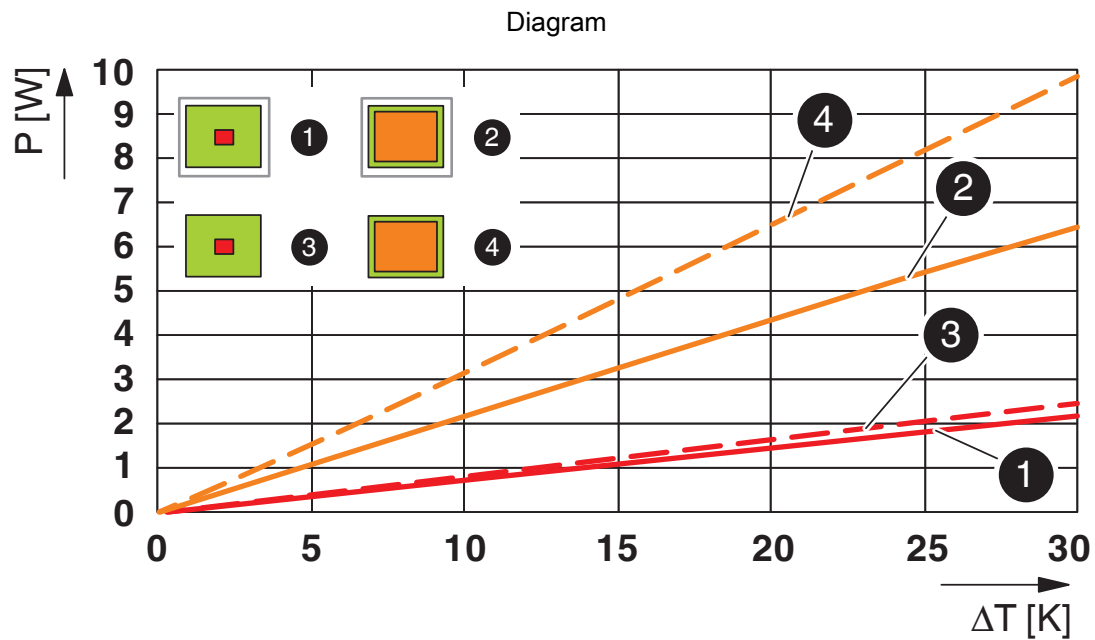
Power dissipation diagram for 0 K ... 100 K



Schematic representation – for additional information, see product range drawing in the Download Center

2203450

<https://www.phoenixcontact.com/be/products/2203450>



Power dissipation diagram for 0 K ... 30 K

UCS 145-125-H-CCD 7035 - Universal housings



2203450

<https://www.phoenixcontact.com/be/products/2203450>

Approvals

🔗 To download certificates, visit the product detail page: <https://www.phoenixcontact.com/be/products/2203450>



UL Recognized

Approval ID: FILE E 240868

UCS 145-125-H-CCD 7035 - Universal housings



2203450

<https://www.phoenixcontact.com/be/products/2203450>

Classifications

ECLASS

| | |
|-------------|----------|
| ECLASS-11.0 | 27182702 |
| ECLASS-13.0 | 27190603 |

ETIM

| | |
|----------|----------|
| ETIM 9.0 | EC001031 |
|----------|----------|

UNSPSC

| | |
|-------------|----------|
| UNSPSC 21.0 | 31261500 |
|-------------|----------|

UCS 145-125-H-CCD 7035 - Universal housings



2203450

<https://www.phoenixcontact.com/be/products/2203450>

Environmental product compliance

| | |
|------------|---|
| China RoHS | Environmentally friendly use period: unlimited = EFUP-e |
| | No hazardous substances above threshold values |

Phoenix Contact 2024 © - all rights reserved
<https://www.phoenixcontact.com>

PHOENIX CONTACT nv/sa
Minervastraat 10-12
1930 Zaventem-Keiberg II
+32 (0)2/723 98 11
info@phoenixcontact.be