

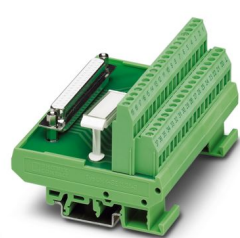
FLKM-D37 SUB/B - Interface module



2281212

<https://www.phoenixcontact.com/pc/products/2281212>

Please be informed that the data shown in this PDF document is generated from our online catalog. Please find the complete data in the user documentation. Our general terms of use for downloads are valid.



VARIOFACE module, with screw connection and D-Subminiature socket strip, for mounting on NS 35/7.5 or NS 32, 37-pos.

Commercial data

Item number	2281212
Packing unit	5 pc
Minimum order quantity	1 pc
Product key	CK2222
Catalog page	Page 248 (IF-2007)
GTIN	4017918054649
Weight per piece (including packing)	195.45 g
Weight per piece (excluding packing)	181.536 g
Customs tariff number	85369010
Country of origin	DE

FLKM-D37 SUB/B - Interface module



2281212

<https://www.phoenixcontact.com/pc/products/2281212>

Technical data

Product properties

Product type	Interface module
Product family	VARIOFACE

Insulation characteristics

Insulation	Functional insulation
------------	-----------------------

Insulation characteristics: Air clearances and creepage distances

Insulation	Functional insulation
Overvoltage category	II
Pollution degree	2

Electrical properties

Operating voltage (AC)	≤ 30 V AC
Operating voltage (DC)	≤ 60 V DC
Current (per branch)	≤ 2.5 A
Current (Total current)	≤ 9.4 A

Air clearances and creepage distances

Rated insulation voltage	125 V
Rated surge voltage	1.2 kV (1.2/50 μs)

Connection data

Connection 1 (control level)

Connection in acc. with standard	IEC 60807-2
Connection method	D-SUB socket strip
Screw thread	UNC 4-40
Number of connections	1
Number of positions	37
Insertion/withdrawal cycles	> 500
Pitch	2.77 mm

Connection 2 (field level)

Connection method	Screw connection
Stripping length	8 mm
Screw thread	M3
Number of positions	38
Conductor cross section rigid	0.2 mm² ... 4 mm²
Conductor cross section flexible	0.2 mm² ... 2.5 mm²
Conductor cross section AWG	24 ... 12

Signaling

Status display present	No
------------------------	----

FLKM-D37 SUB/B - Interface module



2281212

<https://www.phoenixcontact.com/pc/products/2281212>

Dimensions

Item dimensions

Width	101.3 mm
Height	77 mm
Depth	57.57 mm

Material specifications

Color	green (RAL 6021)
Housing insulation material	Polyamide PA non-reinforced

Environmental and real-life conditions

Ambient conditions

Degree of protection (Module)	IP20
Degree of protection (Installation location)	≥ IP54
Ambient temperature (operation)	-20 °C ... 50 °C
Ambient temperature (storage/transport)	-20 °C ... 70 °C
Altitude	≤ 2000 m

Approvals

UKCA

Certificate	UKCA-compliant
-------------	----------------

Standards and regulations

Air clearances and creepage distances

Standards/regulations	EN IEC 60664-1
-----------------------	----------------

Mounting

Mounting type	DIN rail mounting
Mounting position	any

Notes

General	For proper use, the specifications of the installation directive (see Downloads) must be observed. For applications or use with third-party products, the specifications, and the safety and warning instructions of the respective third-party manufacturer must also be met.
---------	--

FLKM-D37 SUB/B - Interface module

2281212

<https://www.phoenixcontact.com/pc/products/2281212>



Phoenix Contact 2024 © - all rights reserved
<https://www.phoenixcontact.com>

PHOENIX CONTACT GmbH & Co. KG
Flachsmarktstraße 8
D-32825 Blomberg
+49 (0) 5235-3 00
info@phoenixcontact.com