

Cover,3 poles, for screw terminal

Part no. NZM1-XKSA

Article no. 260021



Delivery programme

For use with			
For use with			NZM1(-4), PN1(-4), N(S)1(-4)
For use with			3 pole
<b>Notes</b>			
Type contains parts for a terminal located at top or bottom for 3 or 4 pole switches.			
Busbar tag shroud where cable lugs, busbars or tunnel terminals are used.			
Contained in the set with tunnel terminals and screw terminals.			
When using insulated conductor material to IP1X.			
<b>Notes</b>			
Type contains parts for a terminal located at top or bottom for 3 or 4 pole switches.			
Busbar tag shroud where cable lugs, busbars or tunnel terminals are used.			
Contained in the set with tunnel terminals and screw terminals.			
When using insulated conductor material to IP1X.			

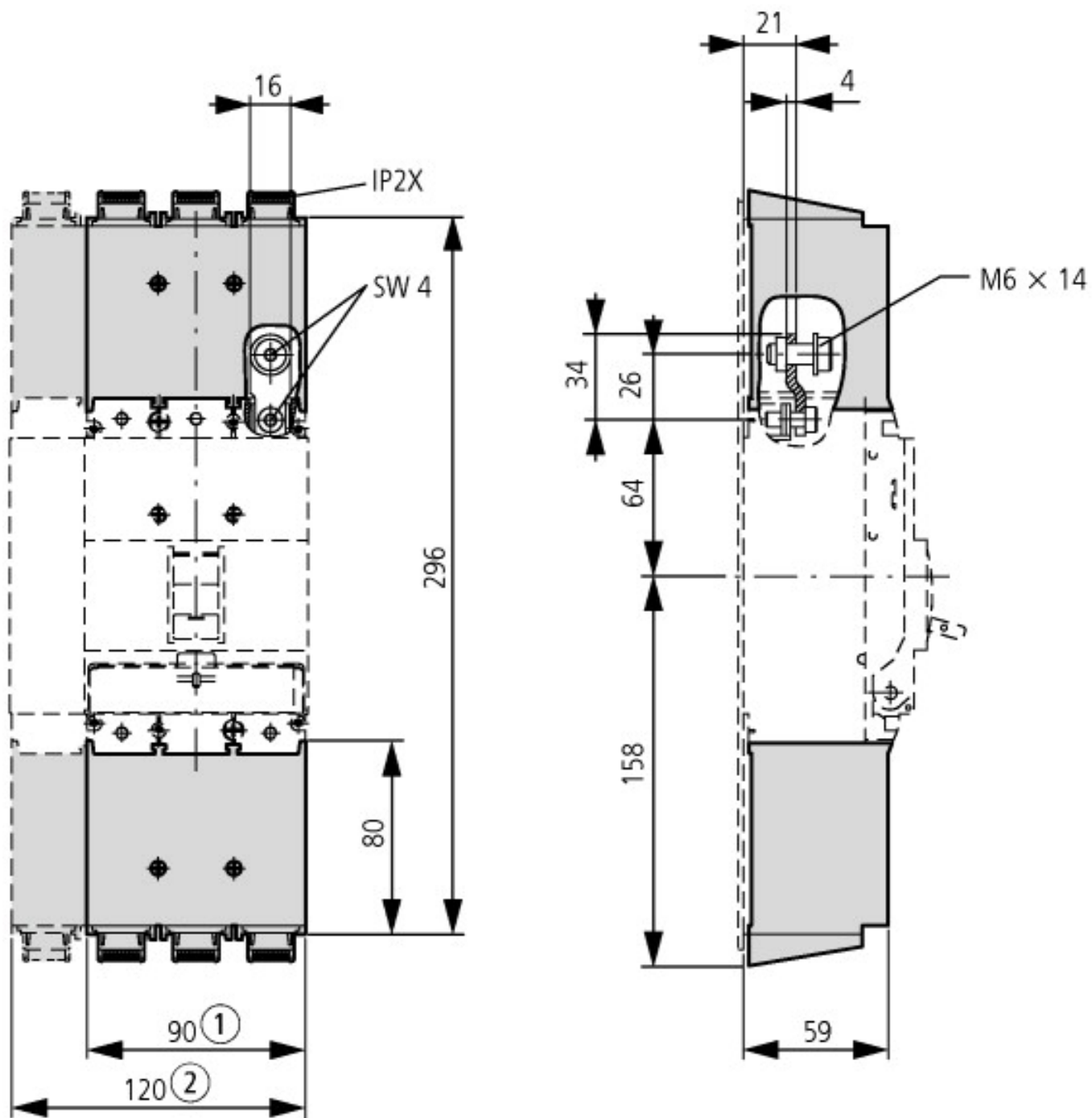
Approbationen

Product Standards	UL489; CSA-C22.2 No. 5-09; IEC60947, CE marking
UL File No.	E31593
UL CCN	DIHS
CSA File No.	022086
CSA Class No.	1437-01
NA Certification	UL Listed, CSA certified
Suitable for	Refer to main component information

Technische Daten nach ETIM 4.0

Type			-
------	--	--	---

Dimensions



- ① 3 pole
- ② 4 pole

#### Additional product information (links)

AWA1230-2004 (IL01219013Z) Connection options and covers

[ftp://ftp.moeller.net/DOCUMENTATION/AWA\\_INSTRUCTIONS/20040905.pdf](ftp://ftp.moeller.net/DOCUMENTATION/AWA_INSTRUCTIONS/20040905.pdf)