

Insulating surround

Part no. NZM2-XBR

Article no. 260197



For toggle lever, rotary handle with rotary drive and remote operator.

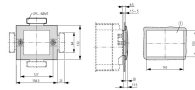
Degree of protection IP40

Delivery programme

| | | | |
|---|--|--|--|
| | | | Insulating surround |
| | | | For toggle lever, rotary handle with rotary drive and remote operator. |
| | | | Degree of protection IP40 |
| For use with | | | NZM2(-4) PN2(-4), N(S)2(-4) |
| Notes | | | |
| For oblong cut-out on doors and enclosures with material thicknesses of 1.5 - 5 mm. | | | |
| External warning plate/designation label can be clipped on | | | |
| NZM4-XBR cannot be combined with rotary handle with rotary drive. | | | |

Approbationen

| | |
|-------------------|---|
| Product Standards | UL489; CSA-C22.2 No. 5-09; IEC60947, CE marking |
| UL File No. | E140305 |
| UL CCN | DIHS |
| CSA File No. | 022086 |
| CSA Class No. | 1437-01 |
| NA Certification | UL Listed, CSA certified |

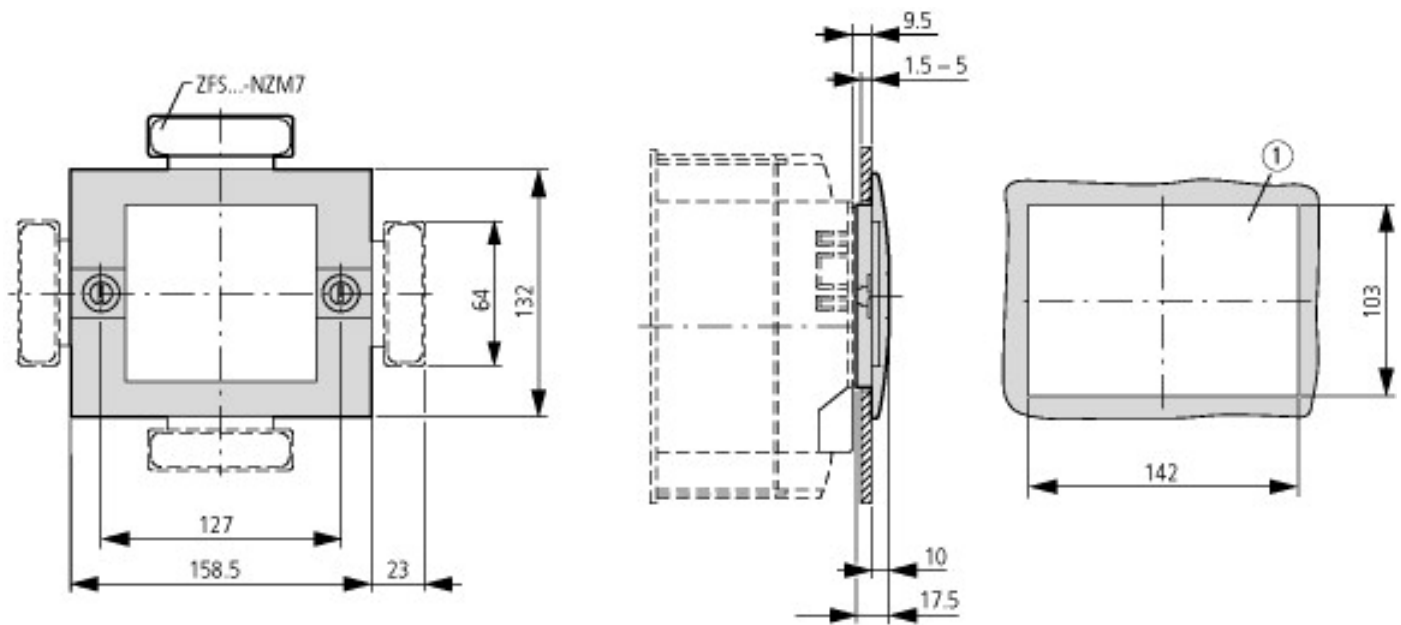


1 Mounting aperture

Technische Daten nach ETIM 4.0

| | | | |
|-----------------------------|--|----|--------------------|
| Width | | mm | 158.5 |
| Design | | | Flush mounting |
| Height | | mm | 132 |
| Depth | | mm | 17.5 |
| With transparent cover | | | No |
| Suitable for emergency stop | | | No |
| Housing material | | | Insulated material |
| Degree of protection (IP) | | | IP40 |

Dimensions



① Mounting aperture

Additional product information (links)

IL01219011Z (AWA1230-1985) insulating surround BG1, BG2

ftp://ftp.moeller.net/DOCUMENTATION/AWA_INSTRUCTIONS/IL01219011Z2010_11.pdf