

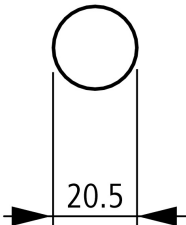
Toggle lever locking facilities

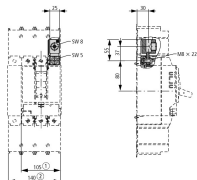
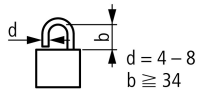
Part no.	NZM2/3-XKAV
Article no.	260201



Off position lockable using up to 3 padlocks (hasp thickness 4 - 8 mm)

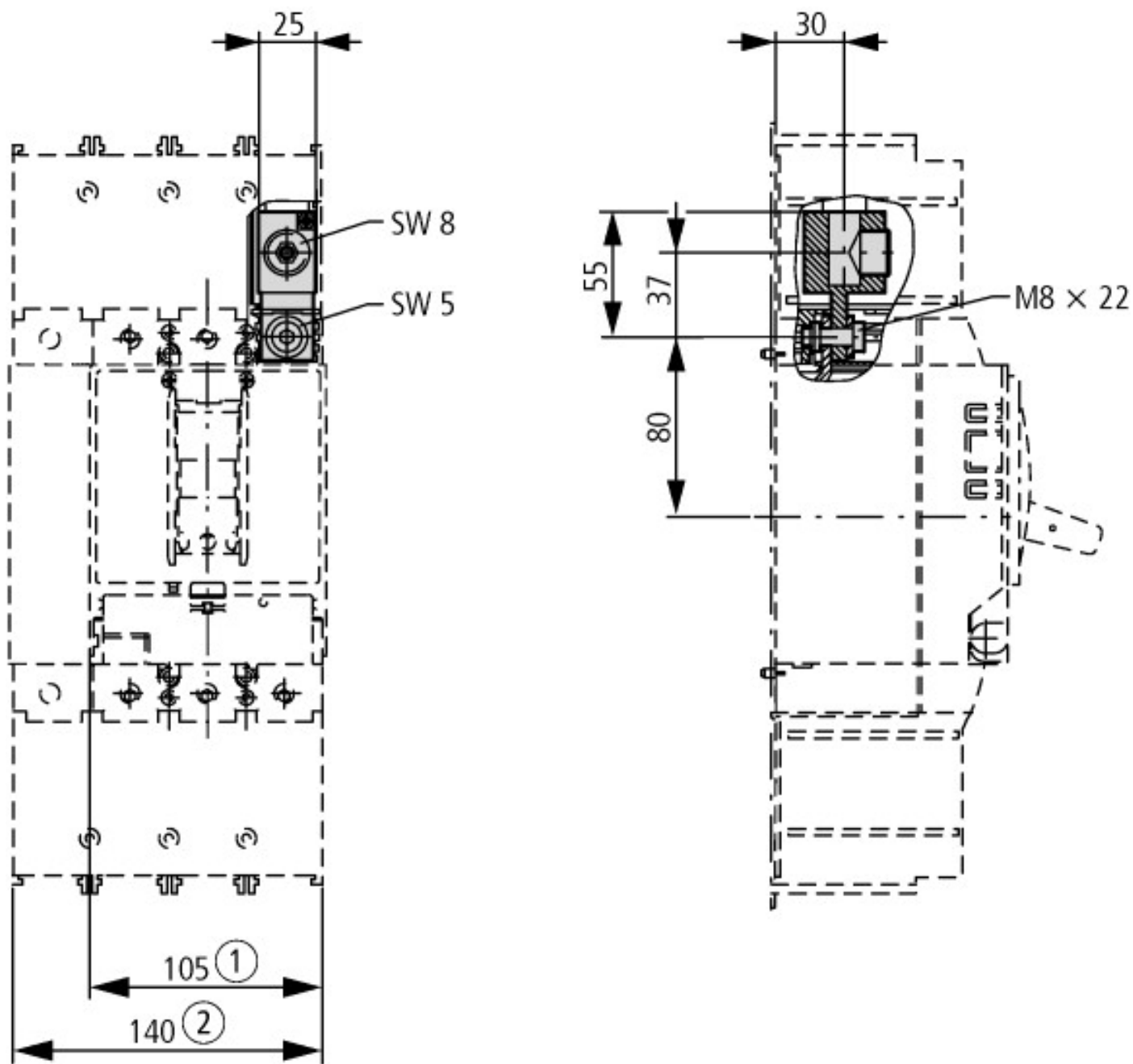
Delivery programme

			Toggle lever locking device
			Off position lockable using up to 3 padlocks (hasp thickness 4 - 8 mm)
Description			Off position lockable using up to 3 padlocks (hasp thickness 4 - 8 mm)
For use with			NZM2(-4), PN2(-4), N(S)2(-4) NZM3(-4), PN3(-4), N(S)3(-4)
Space requirement			
Terminal capacities			
flexible		mm ²	1 x 16 ... 185 1 x 16 ... 185 Up to 240 mm ² can be connected depending on the cable manufacturer.
Notes			
Cannot be combined with insulating surround.			
Notes			
Type contains parts for a terminal located at top or bottom for 3 or 4-pole circuit-breakers.			
A standard with control circuit terminal for 1 x 0.75 - 2.5 mm ² (18 - 14 AWG) or 2 x 0.75 - 1.5 mm ² (18 - 16 AWG) copper conductors.			
Fitted outside the switch housing			
Use with flexible and highly flexible conductors ferrules. Maximum specified cross-section can only be connected when stranded and without ferrules.			
Mounting of the cover NZM2(-4)-XKSA obligatory (supplied).			

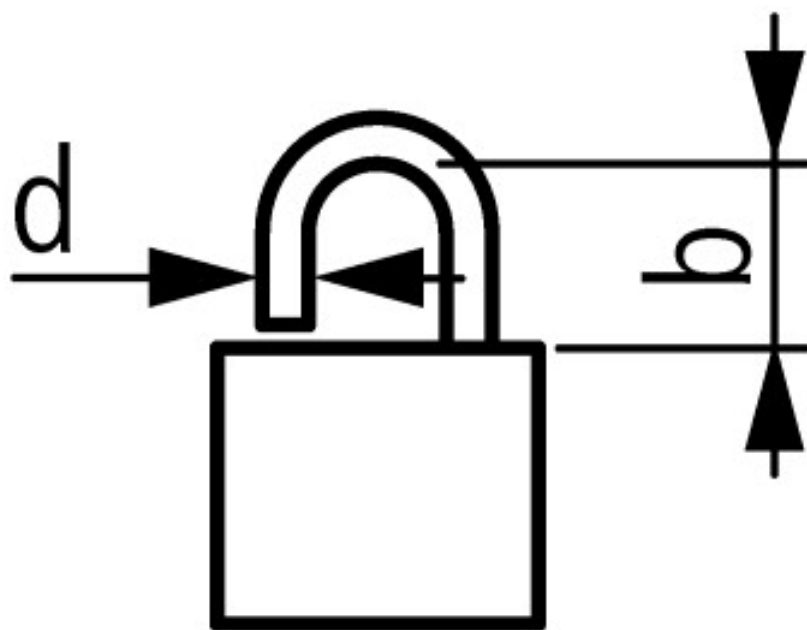

① : 52.5 at NZM2, PN2, N2 ① : 70 at NZM3, PN3, N3
 d = 4 - 8 b ≥ 34
NZM2/3-XKAV

Technische Daten nach ETIM 4.0

Suitable for switch-disconnector		YES
Suitable for circuit-breakers		YES
With shaft		No
Suitable for emergency switching off		No
Lockable		YES
Color		-



- ①: 52.5 at NZM2, PN2, N2
②: 70 at NZM3, PN3, N3



$$d = 4 - 8$$

$$b \geq 34$$

NZM2/3-XXAV

[Additional product information \(links\)](#)