

**Cover, 4 poles, for screw terminal**

**Part no.**

**NZM1-4-XKSA**

**Article no.**

**266741**



**Delivery programme**

For use with			
For use with			NZM1(-4), PN1(-4), N(S)1(-4)
For use with			4 pole

**Notes**

Type contains parts for a terminal located at top or bottom for 3 or 4 pole switches.  
 Busbar tag shroud where cable lugs, busbars or tunnel terminals are used.  
 Contained in the set with tunnel terminals and screw terminals.  
 When using insulated conductor material to IP1X.

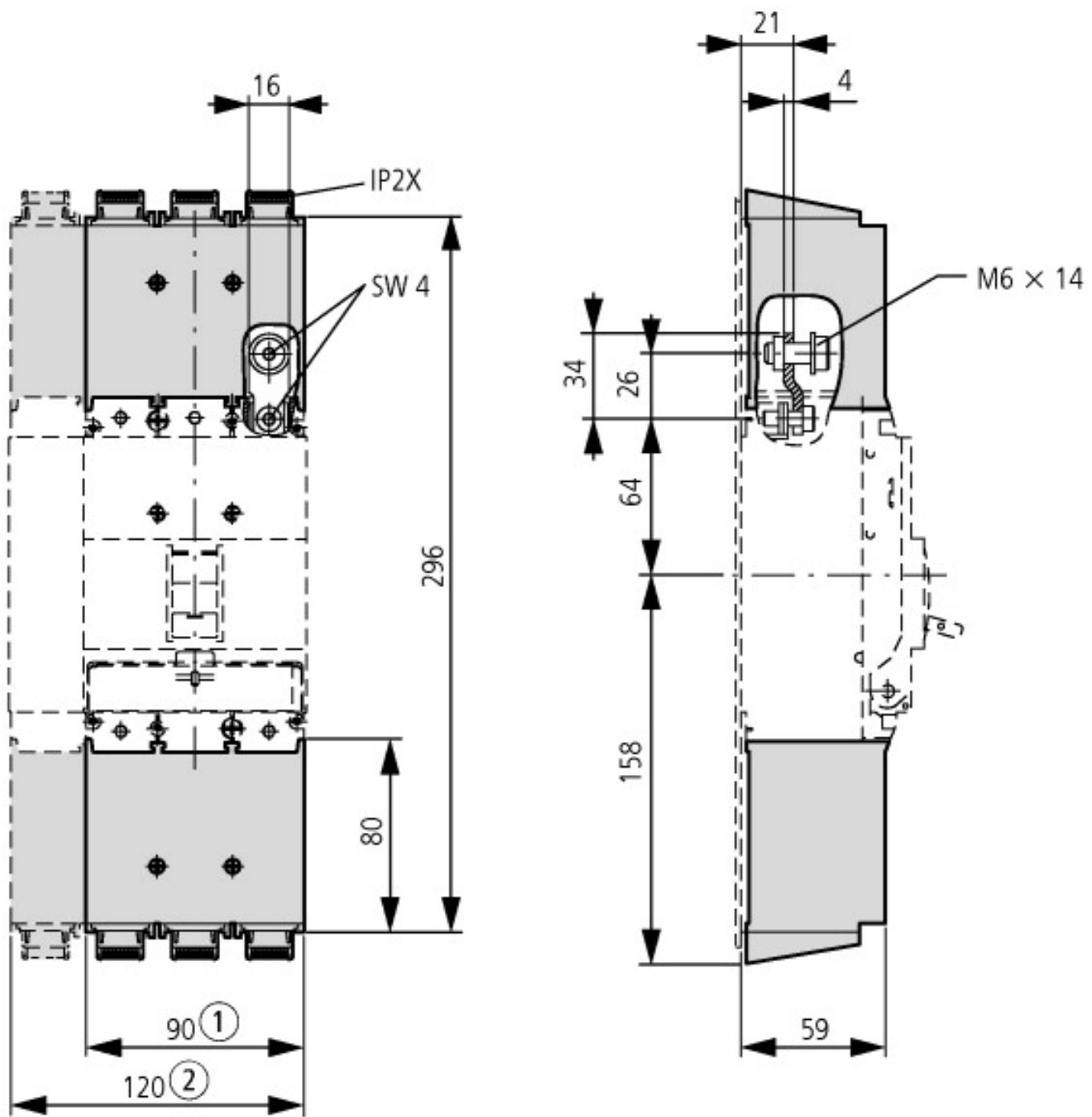
**Notes**

Type contains parts for a terminal located at top or bottom for 3 or 4 pole switches.  
 Busbar tag shroud where cable lugs, busbars or tunnel terminals are used.  
 Contained in the set with tunnel terminals and screw terminals.  
 When using insulated conductor material to IP1X.

**Technische Daten nach ETIM 4.0**

Type			-
------	--	--	---

**Dimensions**



① 3 pole

② 4 pole

### Additional product information (links)

AWA1230-2004 (IL01219013Z) Connection options and covers

[ftp://ftp.moeller.net/DOCUMENTATION/AWA\\_INSTRUCTIONS/20040905.pdf](ftp://ftp.moeller.net/DOCUMENTATION/AWA_INSTRUCTIONS/20040905.pdf)