

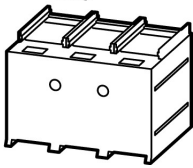
Tunnel terminal and cover, 4 poles

Part no.

NZM4-4-XKA

Article no.

266837



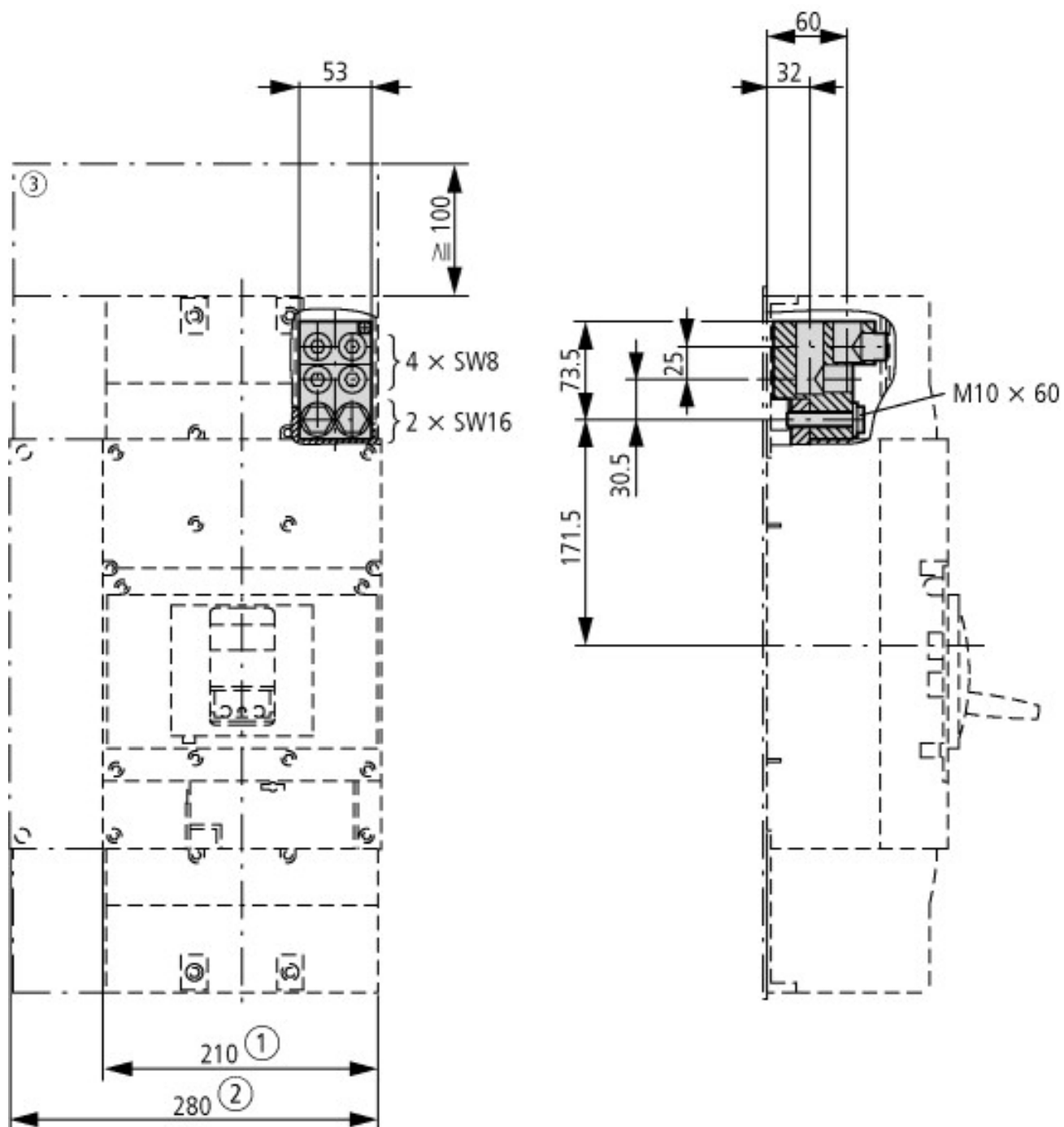
Delivery programme

Space requirement			
Rated current	I_n	A	
For use with			
For use with			NZM4-4, N4-4
For use with			4 pole
Terminal capacities			
Type of conductor			
Cu/Al cable			Copper cable Al cable
Terminal capacities			
flexible		mm^2	1 x 50 - 240 4 x 50 - 240 1 x 50 - 240 4 x 50 - 240
AWG/kcmil			
flexible		mm^2	1 x 0 - 500 4 x 0 - 500 1 x 0 - 500 4 x 0 - 500
Notes			
Type contains parts for a terminal located at top or bottom for 3 or 4-pole circuit-breakers.			
A standard with control circuit terminal for 1 x 0.75 - 2.5 mm^2 (18 - 14 AWG) or 2 x 0.75 - 1.5 mm^2 (18 - 16 AWG) copper conductors.			
Can be fitted to circuit-breaker with screw termination			
Use with flexible and highly flexible conductors ferrules.			
Mounting of the cover NZM4 (-4)-XKSA obligatory (supplied).			
Notes			
The following applies for the rated current: The values have been determined conform to IEC/EN 60947 (switchgear standard) and generally relate to the max. defined cross-sections and are intended for the purpose of orientation.			
The engineering standards which apply in each case must be observed.			

Technische Daten nach ETIM 4.0

Suitable for number of poles			4
Type			-

Dimensions



Additional product information (links)

IL01210012Z (AWA1230-2040) Tunnel terminal, braid terminal

ftp://ftp.moeller.net/DOCUMENTATION/AWA_INSTRUCTIONS/IL01210012Z2010_11.pdf