



## MFD-CPU, DC, without easy-Net

Part no.

Article no.

MFD-CP8-ME

267164

### Program

Product range			Multi-function-display MFD-Titan
Basic function			Power supply unit/CPU modules
Subrange			CPU modules
Supply voltage			24 V DC
easyNet/easyLink			ohne easyNet
			can be combined with display/operating unit MFD-80-.. and I/O module Expandable: Digital inputs/outputs and bus systems AS-Interface, CANopen, PROFIBUS-DP, DeviceNet Bussystem easyNet optional Program and screen memory
Connection type			Spring-cage terminals
Protection type			IP20
Supply voltage			24 V DC

### Approbationen

Product Standards

UL File No.  
UL CCN  
CSA File No.  
CSA Class No.  
NA Certification  
Degree of Protection

IEC/EN see Technical Data; UL 508; CSA C22.2 No. 142-M1987; CSA C22.2 No. 213-M1987; CE marking  
E135462  
NRAQ  
012528  
2252-01 + 2258-02  
UL Listed, CSA certified  
IEC: IP20, UL/CSA Type: -

### General

Standards			EN 61000-6-1/-2/-3/-4, IEC 60068-2-6, IEC 60068-2-27
Dimensions (W x H x D)		mm	107.5 x 90 x 30
Weight		kg	0.145
Mounting			Fitted on the fixing shaft of the display or on top-hat rail according to IEC/EN 60715, 35 mm deep (without display)

### Terminal capacities

Solid		mm <sup>2</sup>	0.24 (AWG 24 - 12)
Flexible with ferrule		mm <sup>2</sup>	0.22.5 (AWG 24 - 12)
Standard screwdriver		mm	3.5 x 0.6

### Climatic environmental conditions

Operating ambient temperature		°C	-25 to 55, cold as per IEC 60068-2-1, heat as per IEC 60068-2-2
Condensation			Take appropriate measures to prevent condensation
Storage		°C	- 40 - 70
Relative humidity, non-condensing (IEC/EN 60068-2-30)		%	5 - 95
Air pressure (operation)		hPa	795 - 1080

### Ambient conditions, mechanical

Protection type (IEC/EN 60529, EN50178, VBG 4)			IP20
Vibrations (IEC/EN 60068-2-6)		Hz	
Constant amplitude 0.15 mm		Hz	10 - 57
Constant acceleration 2 g		Hz	57 - 150
Mechanical shock resistance (IEC/EN 60068-2-27) semi-sinusoidal 15 g/11 ms		Impacts	18
Drop to IEC/EN 60068-2-31	Drop height	mm	50
Free fall, packaged (IEC/EN 60068-2-32)		m	1
Mounting position			Vertical or horizontal

### Electromagnetic compatibility (EMC)

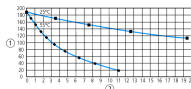
Electrostatic discharge (IEC/EN 61000-4-2, Level 3, ESD)		kV	
Air discharge		kV	8
Contact discharge		kV	6
Electromagnetic fields (RFI), to IEC EN 61000-4-2		V/m	10

Radio interference suppression			EN 55011 Class B, EN 55022 Class B
Burst Impulse (IEC/EN 61000-4-4, Level 3)			
Supply cables		kV	2
Signal lines		kV	2
Power pulses (surge) (IEC/EN 61000-4-5)		kV	2 (supply cables, symmetrical)
power pulses (surge) (IEC/EN 61000-4-5, level 2)		kV	2 (supply cables symmetrical, MFD-AC-CP8..)
Radiated RFI (IEC/EN 61000-4-6)		V	10

### Insulation resistance

Clearance in air and creepage distances			EN 50178, UL 508, CSA C22.2, No. 142
Insulation resistance			EN 50178

### Back-up of real-time clock

Back-up of real-time clock			 <p>① Backup time (hours) ② Service life (years)</p>
Accuracy of the real-time clock		s/day	Normally $\pm 5$ s/day ( $\pm 0.5$ h/year)

### Repetition accuracy of timing relays

Accuracy of timing relays (of values)		%	$\pm 0.02$
Resolution			
Range "S"		ms	5
Range "M:S"		s	1
Range "H:M"		min	1

### Retentive memory

Write cycles of the retentive memory			$10^{10}$ (read/write cycles)
--------------------------------------	--	--	-------------------------------

### Power supply

Rated operational voltage	$U_e$	V	24 DC (-15/+20 %)
Admissible range		V DC	20.4 - 28.8
Residual ripple		%	$\leq 5$
Input current			
at 24 V DC		mA	Normally 200
Voltage dips		ms	10
Power loss			
Heat dissipation at 24 V DC		W	3.4

### Network easyNet

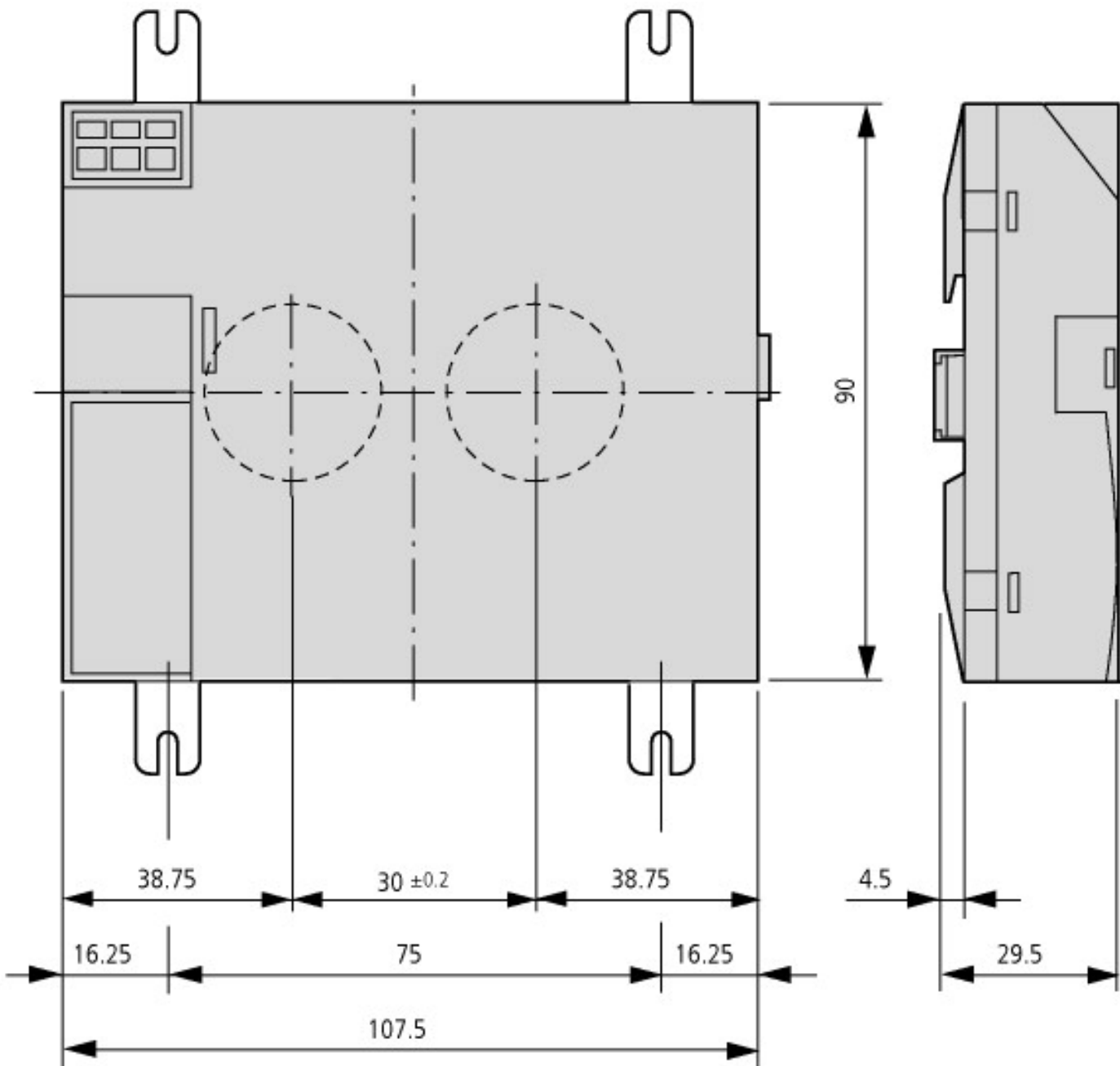
Stations		Number	max. 8
Data transfer rate/distance			1000 kBit/s, 6 m 500 Kbit/s, 25 m 250 Kbit/s, 40 m 125 kBit/s, 125 m 50 Kbit/s, 300 m 20 Kbit/s, 700 m 10 Kbit/s, 1000 m
Potential isolation			
From power supply			yes
From the outputs			yes
to PC interface, memory card, network, easyNet, easyLink			yes
Bus termination (first and last station)			yes
Connection technique			RJ45, 8 pole

### Technical data according to ETIM 4.0

Voltage type of supply voltage			DC
Expandable			YES
With display			No
Number of HW-interfaces RS232			0
Number of HW-interfaces serial TTY			0
Max. number of integrated digital inputs			0
Supporting protocol for LON			No

With time switch			YES
Max. number of integrated analog outputs			0
Number of HW-interfaces RS485			0
Max. number of integrated digital outputs			0
Protection type (IP)			IP20
Height		mm	30
Width		mm	90
Number of Industrial Ethernet HW interfaces			0
Number of HW-interfaces RS422			0
Depth		mm	108
Switching current		A	0
Max. number of integrated analog inputs			0
With relay output			No
Number of HW-interfaces other			0
Radiostandard WLAN 802.11			No
Supporting protocol for EIB			No
Supporting protocol for Foundation Fieldbus			No
Supporting protocol for PROFIBUS			No
Supporting protocol for TCP/IP			No
Number of HW-interfaces PROFINET			0
Supporting protocol for other bus systems			No
Number of HW-interfaces USB			0
Supporting protocol for PROFINET CBA			No
Supporting protocol for DeviceNet Safety			No
Supporting protocol for CAN			No
Supporting protocol for EtherNet/IP			No
Supporting protocol for Data-Highway			No
Supporting protocol for INTERBUS			No
With optical interface			No
Basic device			YES
Flush mounting plates possible			No
Rail mounting possible			YES
Supporting protocol for SERCOS			No
Supporting protocol for AS-Interface			No
Supporting protocol for MODBUS			No
Radiostandard Bluetooth			No
Wall mounting/direct mounting			YES
Supporting protocol for INTERBUS-Safety			No
Supporting protocol for PROFINET IO			No
Rack-mounting possible			No
Supporting protocol for SUCONET			No
Expansion unit			No
Suitable for safety functions			No
Supply voltage DC		V	28.8
IO link master			No
Redundancy-capability			No
Number of HW-interfaces Wireless			0
Supporting protocol for PROFI-safe			No
Supporting protocol for SafetyBUS p			No
Number of HW-interfaces parallel			0
Supporting protocol for DeviceNet			No
Supporting protocol for AS-Interface Safety at Work			No

## Dimensions



#### Additional product information (links)

IL05013014Z (AWA2528-2019) multi-function display, control relay easy

[ftp://ftp.moeller.net/DOCUMENTATION/AWA\\_INSTRUCTIONS/IL05013014Z2010\\_11.pdf](ftp://ftp.moeller.net/DOCUMENTATION/AWA_INSTRUCTIONS/IL05013014Z2010_11.pdf)

IL05013018Z (AWA2528-2175) power supply unit, communication module

[ftp://ftp.moeller.net/DOCUMENTATION/AWA\\_INSTRUCTIONS/IL05013018Z2010\\_11.pdf](ftp://ftp.moeller.net/DOCUMENTATION/AWA_INSTRUCTIONS/IL05013018Z2010_11.pdf)