

PLD E 400 W 375 - LED enclosure light



2702222

<https://www.phoenixcontact.com/cn/products/2702222>

Please be informed that the data shown in this PDF document is generated from our online catalog. Please find the complete data in the user documentation. Our general terms of use for downloads are valid.



LED enclosure light, 24 V DC, length: 375 mm, degree of protection: IP20, can be swiveled, can be switched in series, including mounting accessories

Product description

The LED light is designed to illuminate the interior of control cabinets. The prismatic integrated into the light cover ensures optimum illumination of the control cabinet. You can mount the light without tools via the clip system. You can connect several lights in succession. You can switch the light on and off either via the integrated button or via an external door position switch.

Your advantages

- Tool-free mounting, thanks to clip fastening
- Wiring via sensor/actuator cables with M8 snap-in technology
- Series connection reduces cabling effort for control cabinets arranged in series
- Optimum lighting of the control cabinet, thanks to integrated prismatic and capacity to swivel
- Swiveling enables optimum adjustment to the relevant control cabinet depth
- LED service life of 50,000 h (L70 value) prevents bulb replacement

Commercial data

Item number	2702222
Packing unit	1 pc
Minimum order quantity	1 pc
Sales key	DRL232
Product key	DRL232
Catalog page	Page 499 (C-6-2019)
GTIN	4055626057781
Weight per piece (including packing)	218.1 g
Weight per piece (excluding packing)	170 g
Customs tariff number	8539522000
Country of origin	DE

PLD E 400 W 375 - LED enclosure light



2702222

<https://www.phoenixcontact.com/cn/products/2702222>

Technical data

Notes

Utilization restriction

EMC note	EMC: class A product, see manufacturer's declaration in the download area
----------	---

Product properties

Product type	Control cabinet lighting
Mounting position	any
Application	Control cabinet
Socket	none

Electrical properties

Maximum power dissipation for nominal condition	4.2 W
---	-------

Supply: Module electronics

Connection method	M8 connector (snap-in)
Number of positions	3
Supply voltage	24 V DC
Supply voltage range	19.2 V DC ... 30 V DC
Power consumption	3 W

Connection data


Connection method	M8 connector (snap-in)
-------------------	------------------------

Signaling

Light properties

Source of light type	LED
Number of LEDs	12
Service life, lighting appliance	50,000 h (L70)
Color temperature	5000 K
Color rendering index	75
Luminous flux	340 lm (Net luminous flux)
Illumination	max. 845 lx (50 cm distance)
	max. 210 lx (Distance of 1 m)
Ordinance	Delegated Regulation (EU) 2019/2015
Energy efficiency class	E (1 light source)
Note	This product contains an energy efficiency class E light source.

Dimensions

Dimensional drawing	
---------------------	--

PLD E 400 W 375 - LED enclosure light



2702222

<https://www.phoenixcontact.com/cn/products/2702222>

Width	23 mm
Height	38 mm
Length	375 mm

Material specifications

Color	traffic grey A RAL 7042
Housing material	Plastic

Environmental and real-life conditions

Ambient conditions

Ambient temperature (operation)	-25 °C ... 60 °C
Degree of protection	IP20
Air pressure (operation)	70 kPa ... 106 kPa (up to 3000 m above sea level)
Air pressure (storage/transport)	70 kPa ... 106 kPa (up to 3000 m above sea level)
Ambient temperature (storage/transport)	-40 °C ... 85 °C
Permissible humidity (operation)	5 % ... 95 %
Permissible humidity (storage/transport)	5 % ... 95 %

Standards and regulations

Protection class	III
------------------	-----

Mounting

Mounting type	Clip mounting
Assembly instructions	Magnet attachment available as an accessory
	Screw fixings available as accessories
Mounting position	any

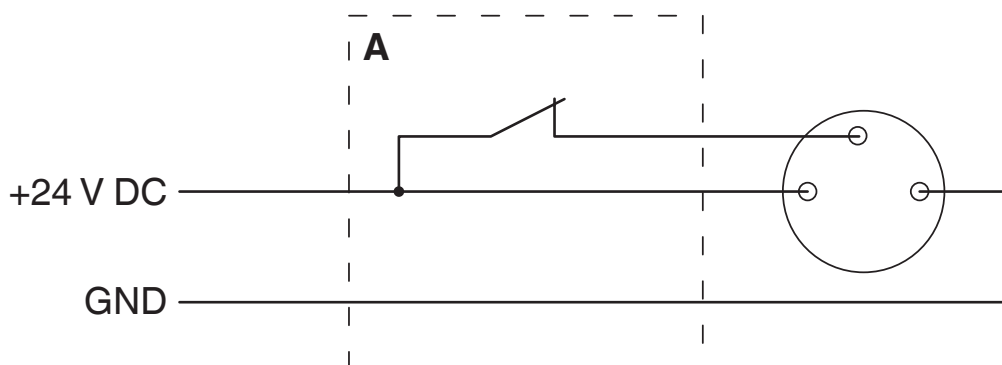
PLD E 400 W 375 - LED enclosure light

2702222

<https://www.phoenixcontact.com/cn/products/2702222>

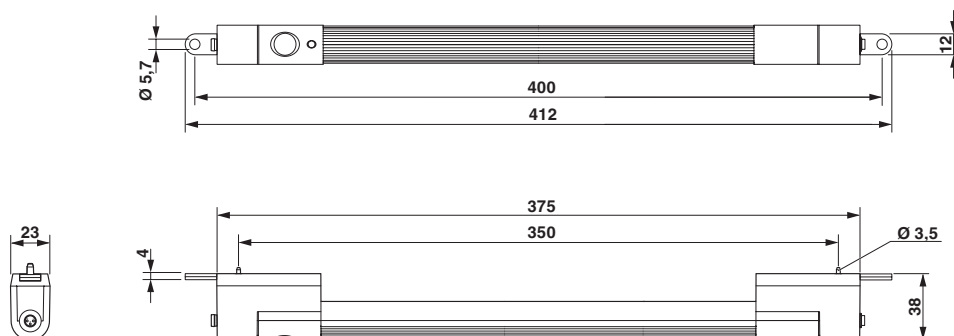
Drawings

Connection diagram



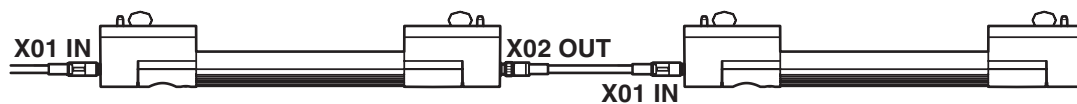
Connection of the light using a door position switch (A)

Dimensional drawing



Dimensional drawing for screw mounting

Schematic diagram



Series connection of two lights

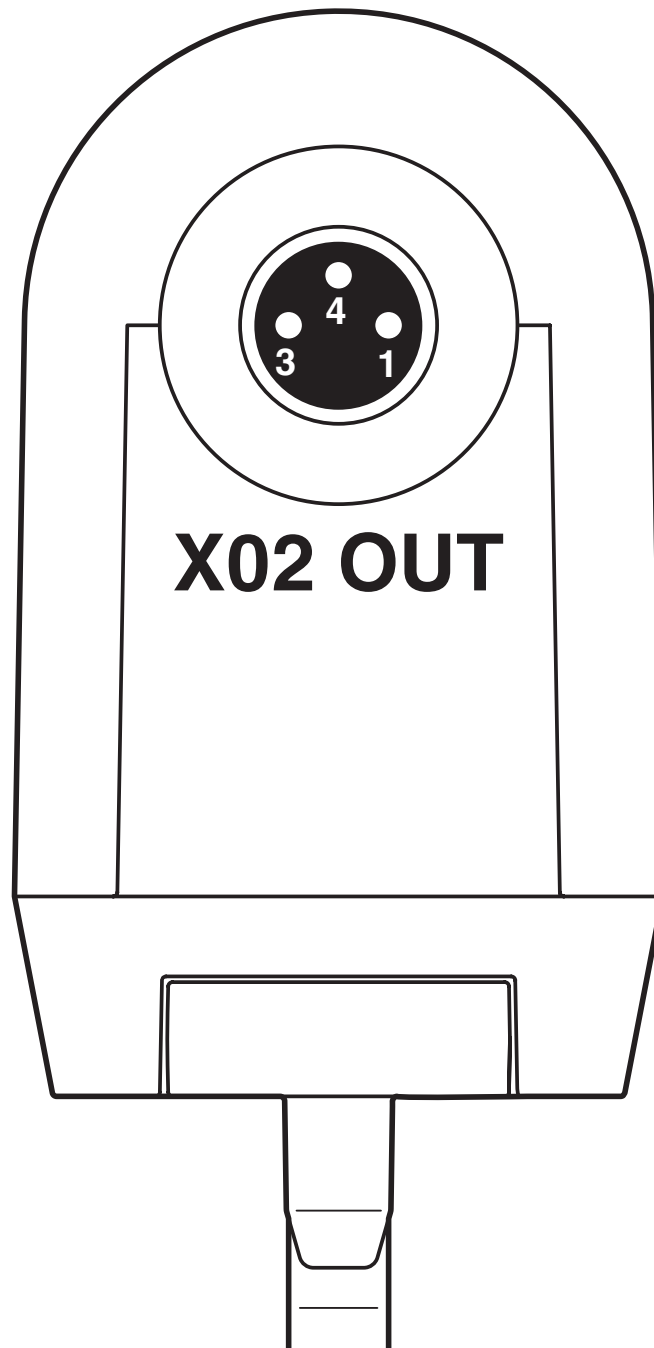
PLD E 400 W 375 - LED enclosure light

2702222

<https://www.phoenixcontact.com/cn/products/2702222>



Connection diagram



Forwarding of the supply voltage with the series connection of lights

PLD E 400 W 375 - LED enclosure light



2702222

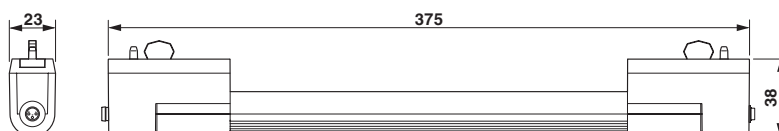
<https://www.phoenixcontact.com/cn/products/2702222>

Schematic diagram



Connection of a light

Dimensional drawing



Dimensional drawing

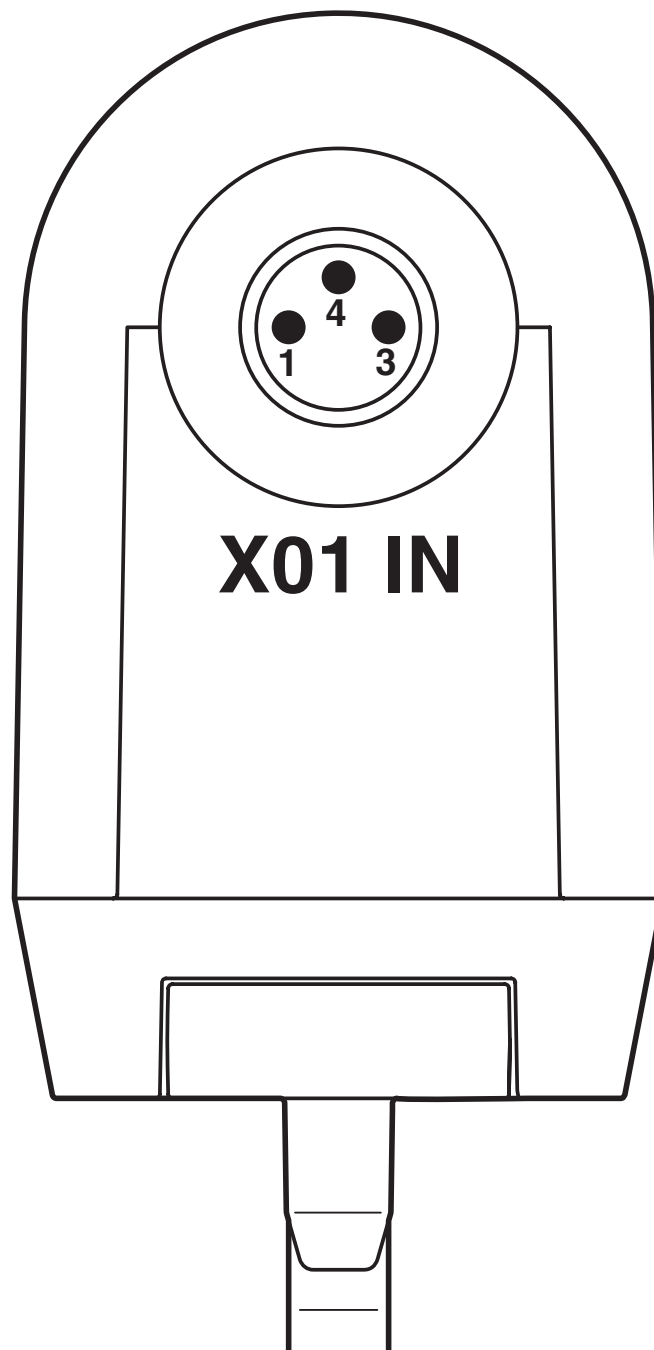
PLD E 400 W 375 - LED enclosure light

2702222

<https://www.phoenixcontact.com/cn/products/2702222>



Connection diagram



Connection of the supply voltage of a light

PLD E 400 W 375 - LED enclosure light



2702222

<https://www.phoenixcontact.com/cn/products/2702222>

Classifications

ECLASS

ECLASS-11.0	27182808
ECLASS-12.0	27182808
ECLASS-13.0	27182808

ETIM

ETIM 8.0	EC000321
----------	----------

UNSPSC

UNSPSC 21.0	32151500
-------------	----------

PLD E 400 W 375 - LED enclosure light



2702222

<https://www.phoenixcontact.com/cn/products/2702222>

Environmental product compliance

China RoHS	Environmentally friendly use period: unlimited = EFUP-e
	No hazardous substances above threshold values

Phoenix Contact 2024 © - all rights reserved
<https://www.phoenixcontact.com>

菲尼克斯（中国）投资有限公司总部
南京市江宁经济开发区菲尼克斯路36号
（江宁236信箱）邮编：211100
025-52121888
phoenix@phoenixcontact.com.cn