

Please be informed that the data shown in this PDF document is generated from our online catalog. Please find the complete data in the user documentation. Our general terms of use for downloads are valid.



LED enclosure light, 24 V DC, length: 500 mm, degree of protection: IP20, can be swiveled, can be switched in series, including mounting accessories

Product description

The LED light is designed to illuminate the interior of control cabinets. The prismatic integrated into the light cover ensures optimum illumination of the control cabinet. You can mount the light without tools via the clip system. You can connect several lights in succession. You can switch the light on and off either via the integrated button or via an external door position switch.

Your advantages

- Tool-free mounting, thanks to clip fastening
- Wiring via sensor/actuator cables with M8 snap-in technology
- Series connection reduces cabling effort for control cabinets arranged in series
- Optimum lighting of the control cabinet, thanks to integrated prismatics and capacity to swivel
- Swiveling enables optimum adjustment to the relevant control cabinet depth
- LED service life of 50,000 h (L70 value) prevents bulb replacement

Commercial data

Item number	2702223
Packing unit	1 pc
Minimum order quantity	1 pc
Product key	DRL232
Catalog page	Page 499 (C-6-2019)
GTIN	4055626057798
Weight per piece (including packing)	274.65 g
Weight per piece (excluding packing)	274.65 g
Customs tariff number	94054231
Country of origin	DE

# PLD E 400 W 500 - LED enclosure light



2702223

<https://www.phoenixcontact.com/pc/products/2702223>

## Technical data

### Notes

#### Utilization restriction

EMC note	EMC: class A product, see manufacturer's declaration in the download area
----------	---

### Product properties

Product type	Control cabinet lighting
Application	Control cabinet
Mounting position	any
Special properties	can be swiveled $\pm 90^\circ$ swivel range
	can be switched in series
	including mounting accessories
Socket type	No socket

### Electrical properties

Maximum power dissipation for nominal condition	5 W
---	-----

#### Supply: Module electronics

Connection method	M8 connector (snap-in)
Number of positions	3
Supply voltage	24 V DC
Supply voltage range	19.2 V DC ... 30 V DC
Power consumption	5 W

### Connection data

Connection method	M8 connector (snap-in)
-------------------	------------------------

### Signaling

#### Light properties

Source of light type	LED
Number of LEDs	20
Service life, lighting appliance	50,000 h (L70)
Color temperature	5000 K
Color rendering index	75
Luminous flux	560 lm (Net luminous flux)
Illumination	max. 1350 lx (50 cm distance)
	max. 335 lx (Distance of 1 m)
Ordinance	Delegated Regulation (EU) 2019/2015
Energy efficiency class	E (1 light source)
Note	This product contains an energy efficiency class E light source.


### Dimensions

# PLD E 400 W 500 - LED enclosure light



2702223

<https://www.phoenixcontact.com/pc/products/2702223>

Dimensional drawing	
Width	23 mm
Height	38 mm
Length	500 mm

## Material specifications

Color	traffic grey A RAL 7042
Material ()	Plastic
Housing material	Plastic

## Environmental and real-life conditions

### Ambient conditions

Ambient temperature (operation)	-25 °C ... 60 °C
Degree of protection	IP20
Air pressure (operation)	70 kPa ... 106 kPa (up to 3000 m above sea level)
Air pressure (storage/transport)	70 kPa ... 106 kPa (up to 3000 m above sea level)
Ambient temperature (storage/transport)	-40 °C ... 85 °C
Permissible humidity (operation)	5 % ... 95 %
Permissible humidity (storage/transport)	5 % ... 95 %

## Standards and regulations

Protection class	III
------------------	-----

## Mounting

Mounting type	Clip mounting
Assembly instructions	Magnet attachment available as an accessory
	Screw fixings available as accessories
Mounting position	any

# PLD E 400 W 500 - LED enclosure light

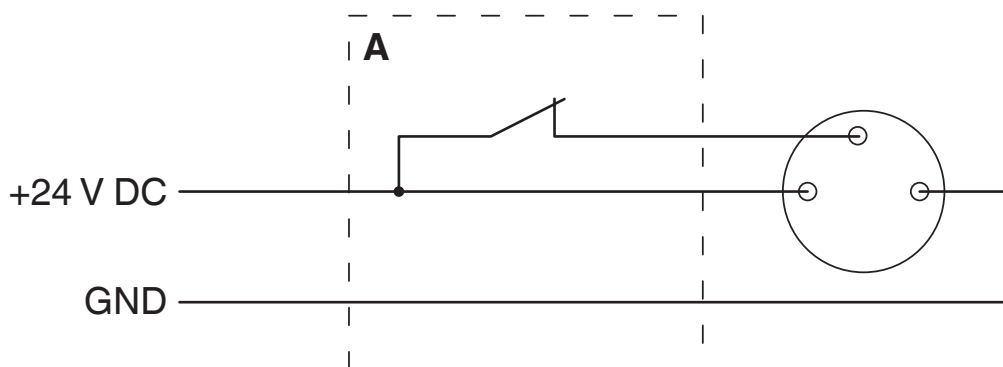
2702223

<https://www.phoenixcontact.com/pc/products/2702223>



## Drawings

Connection diagram



Connection of the light using a door position switch (A)

Schematic diagram



Connection of a light

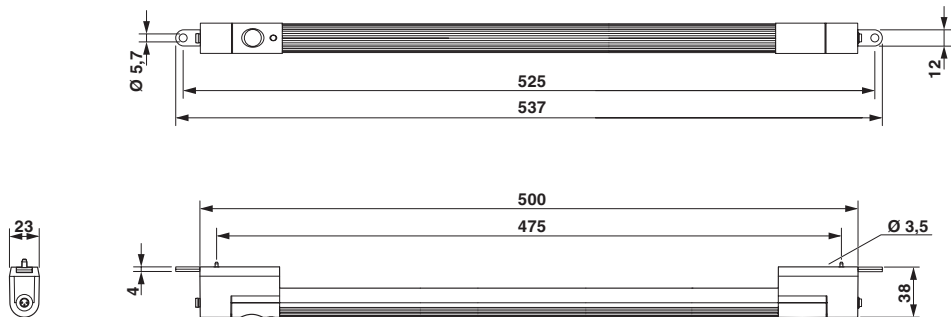
# PLD E 400 W 500 - LED enclosure light



2702223

<https://www.phoenixcontact.com/pc/products/2702223>

Dimensional drawing



Dimensional drawing for screw mounting

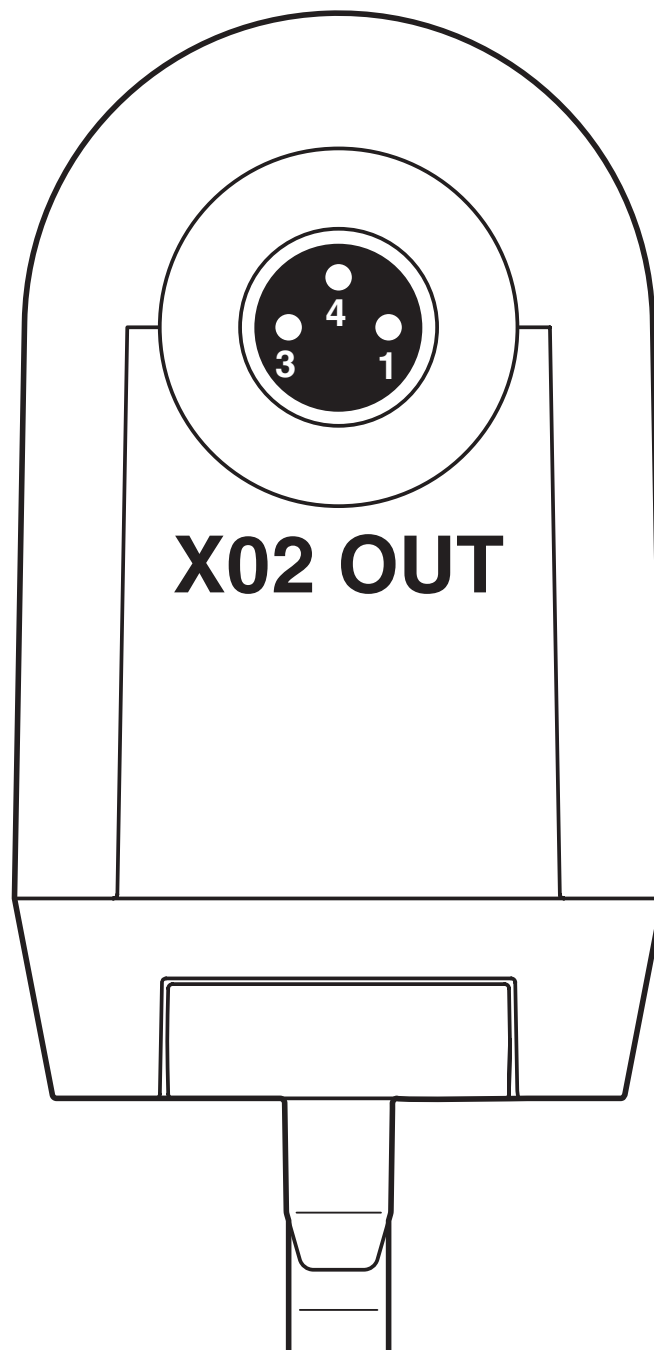
# PLD E 400 W 500 - LED enclosure light

2702223

<https://www.phoenixcontact.com/pc/products/2702223>



Connection diagram



Forwarding of the supply voltage with the series connection of lights

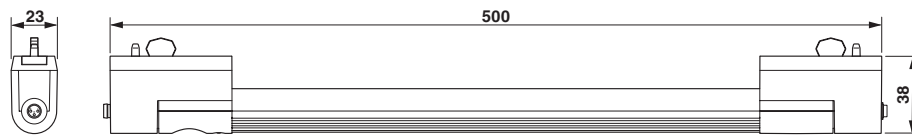
# PLD E 400 W 500 - LED enclosure light



2702223

<https://www.phoenixcontact.com/pc/products/2702223>

Dimensional drawing



Dimensional drawing

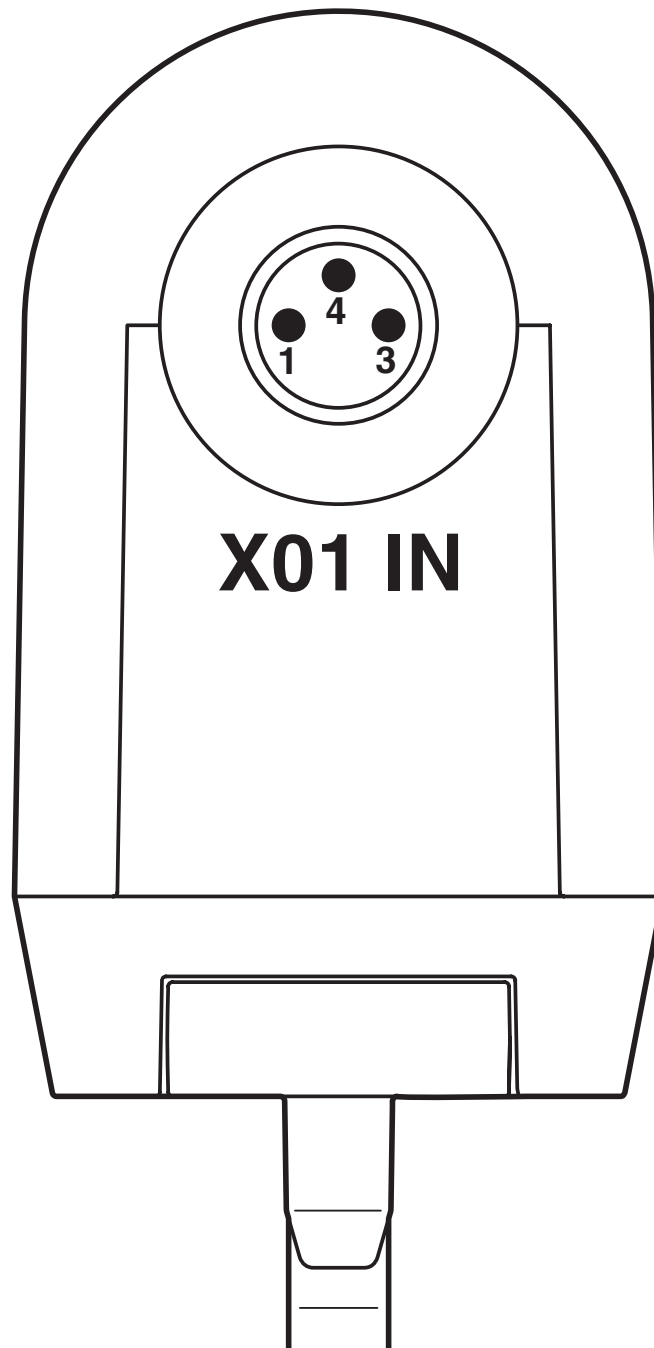
# PLD E 400 W 500 - LED enclosure light

2702223

<https://www.phoenixcontact.com/pc/products/2702223>



Connection diagram



Connection of the supply voltage of a light



# PLD E 400 W 500 - LED enclosure light

2702223

<https://www.phoenixcontact.com/pc/products/2702223>



Schematic diagram



Series connection of two lights

# PLD E 400 W 500 - LED enclosure light



2702223

<https://www.phoenixcontact.com/pc/products/2702223>

## Approvals

To download certificates, visit the product detail page: <https://www.phoenixcontact.com/pc/products/2702223>



**UL Listed**

Approval ID: FILE E 362966



**cUL Listed**

Approval ID: FILE E 362966



**EAC**

Approval ID: TR\_TS\_D\_12879-22

**cULus Listed**

# PLD E 400 W 500 - LED enclosure light



2702223

<https://www.phoenixcontact.com/pc/products/2702223>

## Classifications

### ECLASS

ECLASS-11.0	27182808
ECLASS-12.0	27182808
ECLASS-13.0	27182808

### ETIM

ETIM 8.0	EC000321
----------	----------

### UNSPSC

UNSPSC 21.0	32151500
-------------	----------

# PLD E 400 W 500 - LED enclosure light



2702223

<https://www.phoenixcontact.com/pc/products/2702223>

## Environmental product compliance

China RoHS	Environmentally friendly use period: unlimited = EFUP-e
	No hazardous substances above threshold values

Phoenix Contact 2024 © - all rights reserved  
<https://www.phoenixcontact.com>

PHOENIX CONTACT GmbH & Co. KG  
Flachmarktstraße 8  
D-32825 Blomberg  
+49 (0) 5235-3 00  
[info@phoenixcontact.com](mailto:info@phoenixcontact.com)